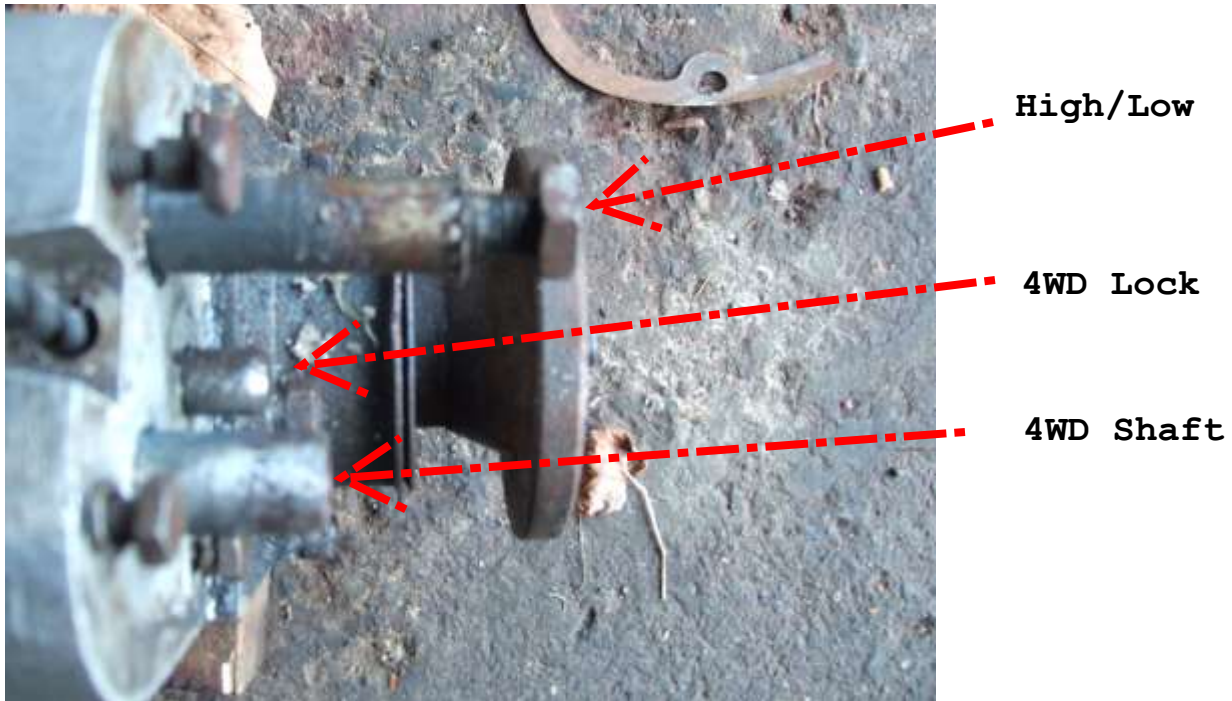


Transfer box selector shaft measurements in various positions as below.

high 2wd      high/low 68mm      4wd lock 15mm      4wd shaft 27mm



High 4wd      high/low 68mm      4wd lock 27mm      4wd shaft 51mm



Video of selector shafts movements not mine

<https://www.youtube.com/watch?v=Jz9uvVRFywk>

Transfer box selector shaft measurements in various positions as below.

Low 4wd      high/low      44mm      4wd lock 15mm      4wd shaft 51mm



Neutral high/low lever 56mm      4wd lock 15mm      4wd shaft 44mm

