

BRAKE SYSTEM BLEED (ABS)

Service repair no - 70.25.02

Equipment: Bleed tube and a clean bottle containing a small amount of clean liquid.



CAUTION: Clean all bleed screws, filler cap and connections thoroughly using clean brake fluid only. **DO NOT USE MINERAL OIL I.E. ENGINE OIL ETC. MAINTAIN CLEANLINESS THROUGHOUT.**

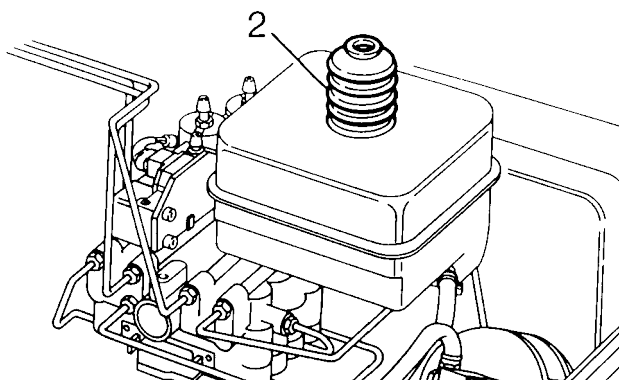


NOTE: Do not allow reservoir fluid level to fall below 'MIN' level during bleeding. Regularly check level and keep topped up to 'MAX' level.



WARNING: Do not use previously used brake fluid. Ensure only new fluid is used, taken from a clean sealed container. Carefully dispose of unwanted fluid in a sealed container, marked **USED BRAKE FLUID**.

1. Switch off ignition and depressurise system. Ensure ignition remains OFF until instruction 7.



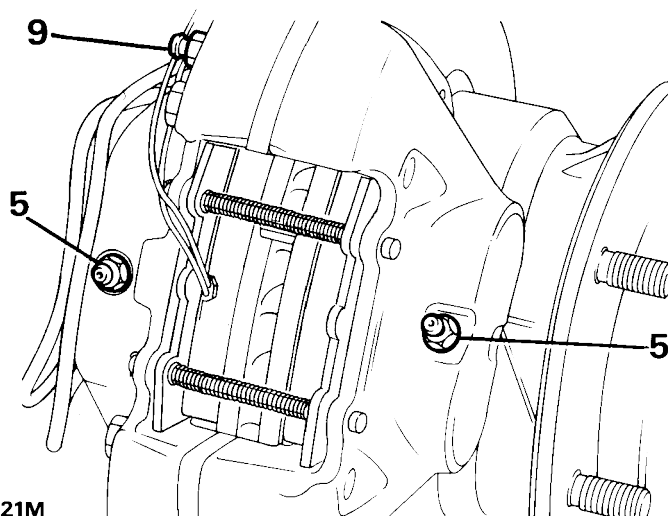
RR4082

2. Fill fluid reservoir with specified fluid to 'MAX' level.



NOTE: Time consumed in filling booster may be reduced by fitting a rubber bellows unit to filler neck, using hand pressure to pressurise the reservoir. A spare bellows unit from booster push rod is suitable for this purpose. Ensure bellows unit is perfectly clean to avoid foreign matter entering system. Raising rear of vehicle will assist fill procedure.

3. Depress brake pedal slowly and progressively five times, using full pedal stroke. Release pedal for five to ten seconds, air bubbles will rise into reservoir.
4. Repeat instruction 3. until some resistance is felt. If no resistance is felt check clevis pin is connected to correct (UPPER) hole in brake pedal
5. Bleed four front caliper lower (hydrostatic) bleed screws in the conventional manner. In the order: outer bleed screw driver's side, opposite caliper outer bleed screw, inner bleed screw, inner bleed screw driver's side. Depress brake pedal slowly and progressively, locking bleed screw at bottom of each stroke.

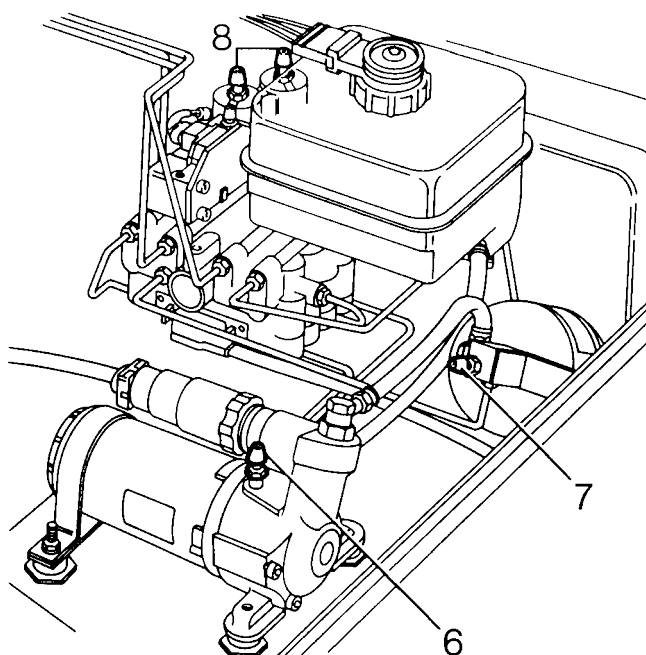


RR2821M

6. Bleed hydraulic pump - open bleed screw on pump and allow fluid to flow until clear of air bubbles. Do not use bleed bottle, use a clean absorbant cloth to prevent fluid spillage.



7. Bleed accumulator - open bleed screw. If vehicle has ETC, accumulator bleed screw is on top of ETC valve block. Switch on ignition, run pump for 3-4 secs, switch off and repeat procedure until fluid is clear of air bubbles. Switch off ignition. Close bleed screw.
8. Bleed two hydraulic booster bleed screws. Open one bleed screw, depress brake pedal, switch on ignition, run pump until fluid is clear of air bubbles. Close booster bleed screw, switch off ignition, release pedal. Repeat for other bleed screw.
12. Close caliper bleed screw before releasing pedal, repeat for remaining three hydrostatic bleed screws.
13. Check/top up reservoir fluid level. **See Fluid Level Check / Top Up**
14. Dry all connections, fully pressurise system, check for leaks. If two full brake applications switch on pump, from fully charged, rebleed system.



RR4083

9. Bleed power circuit at four calipers in turn. Depress pedal, open bleed screw, (upper bleed screw on front calipers). Switch on ignition, run pump for 3-4 secs, switch off and repeat procedure until fluid is clear of air bubbles. Switch off ignition, close caliper bleed screw, release pedal.
10. Bleed master cylinder - switch ignition on. System pressure will increase until pump cuts out. If pump does not cut out after running for 45 secs, check system for leaks.
11. Bleed hydrostatic circuit calipers - open one front lower caliper bleed screw. Actuate brake pedal several times, using only lower two thirds of pedal travel, until fluid is clear of air bubbles. Stop actuation if fluid warning light comes on and allow pressure to build up.