

Dougs Landrover Wiring 2018 200Di ex discovery engine in ex petrol Series 3 88" 1972 with Extras

- 1 Starter Motor
- 2 Solenoid starter motor
- 3 Switch for horn
- 4 Horn
- 5 Inspection lamp sockets
- 6 Instrument panel lamps
- 7 Instrument panel lamps
- 8 Fog light switch
- 9 Tail Lamp LH
- 10 Tail Lamp RH
- 11 Side Lamp LH
- 12 Side Lamp RH
- 13 Headlamp LH dip beam
- 14 Headlamp RH dip beam
- 15 Warning lamp headlamp Main beam
- 16 Headlamp LH Main beam
- 17 Headlamp RH Main beam
- 18 Direction indicator lamp Rear RH
- 19 Direction indicator lamp Front RH
- 21 Direction indicator lamp Front LH
- 22 Direction indicator lamp Rear LH
- 23 Battery
- 24 Diesel stoip solenoid
- 25 Switch Headlamp flash / dip / Main
- 26 Warning lamp indicator RH
- 27 Warning lamp indicator RH

- 28 Indicator Flasher unit
- 29 Indicator switch
- 30 Hazard warning switch
- 31 Alternator Discovery?
- 32 Warning lamp ignition
- 33 Trailer warning lamp
- 34 Warning light oil pressure
- 35 Brake fluid level warning light+buzzer.
- 36 Voltage stabiliser for temp & fuel
- 37 Switch stop lamp
- 38 Switch windscreen wiper
- 39 Switch screen wash on back of 38
- 40 **Relay** starter activation
- 41 Fuel gauge
- 42 Water temp gauge original
- 43 Wiper motor
- 44 Wash motor
- 45 Switch oil pressure
- 46 Fuel tank sender
- 47 Water temp sender
- 48 Stop Lamp LH
- 49 Stop lamp RH
- 50 Screen wash pump
- 51 Interior light
- 52 Rad Electric fan switch
- 53 Rad Electric fan
- 54 Rad Electric fan **Relay** LH on slam panel

- 55 Temp switch for Rad Electric fan
- 56 Heater switch two speed
- 57 Heater fan
- 58 Rear wiper motor
- 59 Rear washer motor
- 60 Reverse light switch on Gearbox
- 61 Reverse light
- 62 Reverse light dash indicator
- 63 Extra temp gauge
- 64 Extra temp sender front engine block
- 65 Fog Light
- 66 Fog light Dash indicator lamp
- 67 **Relay** Glow plug on bulkhead.
- 68 Glow Plugs
- 69 Aux lighter socket under passenger seat
- 70 Radio
- 71 **Relay** Main Beam middle on slam panel
- 72 **Relay** Dip Beam RH on slam panel
- 73 Temp and oil pressure gauge lights
- 74 Heater blower full speed
- 75 Intermittent wipe switch
- 76 **Relay** Intermittent wipe in dash.
- 77 **Relay** Rear window heater front under seat
- 78 Rear window heater switch
- 79 Rear wash wipe switch.
- 80 **Relay** Rear wiper Middle under seat .
- 81 Aux lighter socket on centre dash
- 82 Brake fluid level switch.

Fuses in passenger seat box

- F1 Rear wiper motor relay and wash pump
 F2 Rear wiper motor 15A
 F3 Rear door heated window 15A
 F4 Radio
 F5 Rear binterior light
 F6 Inline fuse to radio 5A back of radio.

- F9 Head lights & rad fan relays on slam panel 40A midi
 F10 Midi fuse Glow plugs 50A + radio & Aux socket

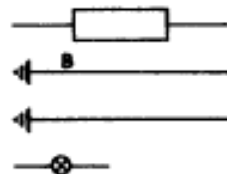
Original fuses

- Top 25A Gauges voltmeter stop& reverse lamps
 2nd 25A Heater fan & Rad Fan relay ,
 3rd 10A Rear heated screen timer front wipers interior light.
 4th 25A Headlamp flash function + Indicators and hazards

Key to cable colours

B	Black	R	Red
G	Green	U	Blue
L	Light	W	White
N	Brown	Y	Yellow
P	Purple		

The last letter of a colour code denotes the tracer colour



Snap connection and/or plugs and sockets

Earth connections via cables

Earth connections via terminals or fixing bolts

Clinch connection