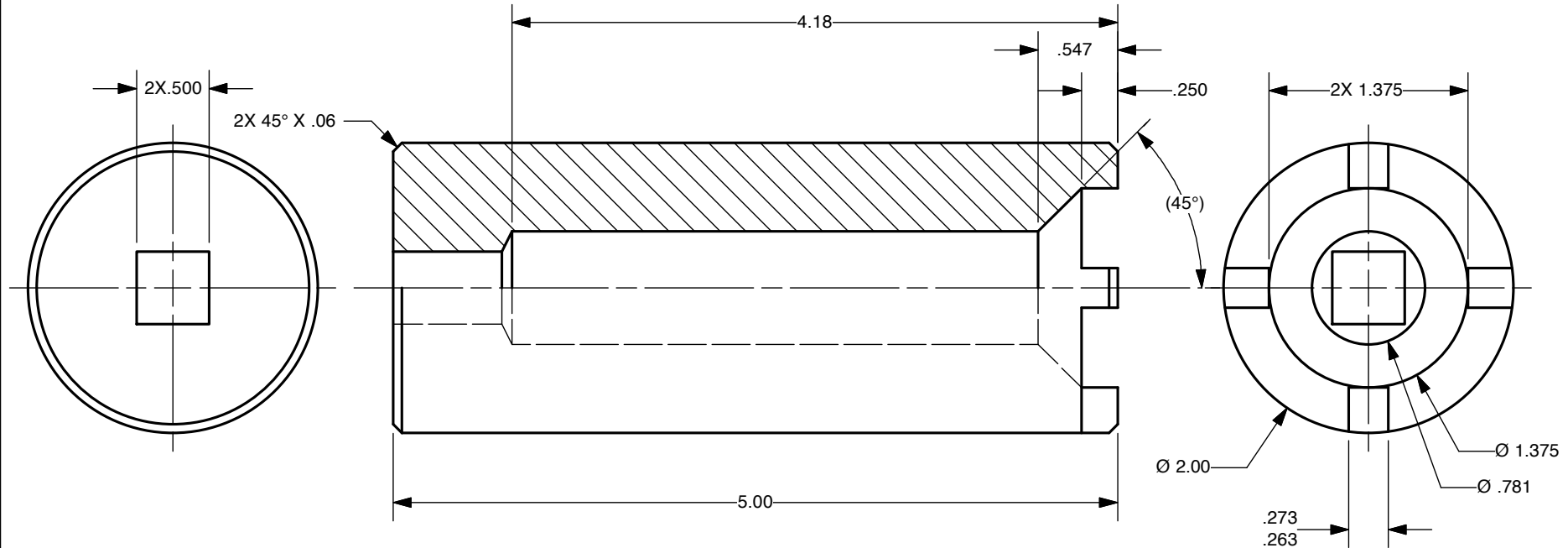


NOTES:

1. BREAK ALL SHARP EDGES AND CORNERS, .020 MAX
2. SURFAE FINISH 100 $\sqrt{\text{V}}$ ON ALL MACHINED SURFACES
3. THIS DRAWING MADE AVAILABLE TO THE LAND-ROVER OWNING COMMUNITY BECAUSE THIS TOOL NEEDS TO BE AVAILABLE. I HAVE SEEN TOO MANY NUTS TIGHTENED WITH A PUNCH. THE TORQUE SPECIFICATION IS 100 LB-FT

REVISION HISTORY

REV	DESCRIPTION	DATE	APPROVED
1	RE DRAWN, VECTORWORKS	28FEB11	GOT



1	1	Ø2.00	CRS C1018	5.00		
ITEM NO.	QTY.	SIZE	MATERIAL	LENGTH	DESCRIPTION	
UNLESS OTHERWISE SPECIFIED DIM ARE IN INCHES TOL ON ANGLE $\pm 2^\circ$ 2 PL $\pm .02$ 3 PL $\pm .005$ INTERPRET DIM AND TOL PER ASME Y14.5M-1994			DESIGNED BY GOT	14AUG89	EXPEDITION ENGINEERING GEOFF TOBIN SAN LUIS OBISPO COUNTY, CA	
THIRD ANGLE PROJECTION			DRAWN BY GOT	28FEB11		
			CHECKED BY		TITLE WRENCH, MAINSHAFT NUT LAND-ROVER SERIES I, II, IIA, IIB, III REF PT NO. 600300, LRT-37-509	
			APPROVED BY			
			OTHER APPROVALS		SIZE A	CAGE CODE NONE
			CAD FILE NAME 600300GOT		DRAWING NO. 600300GOT	REV 1
DRAWN ON MAC OSX			SCALE FULL	EST. WGT N/A	SHEET 1	OF 1