

2	-	engine control module (ECM)
3	-	Starter relay
4	-	Glow plug relay
5	-	Transceiver coil
6	-	Anti-theft system module

## OVERVIEW

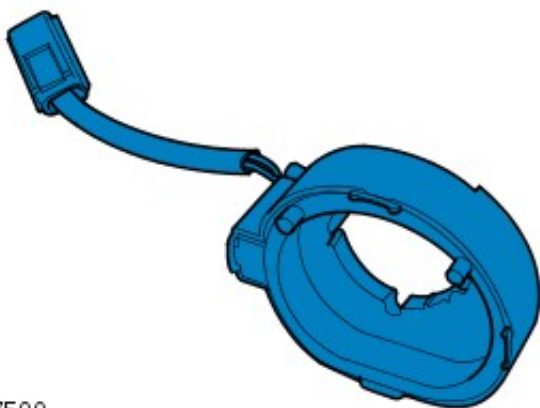
The 10AS anti-theft system works in conjunction with the ECM to control the passive anti-theft system. The passive anti-theft system immobilizes the engine by inhibiting the starter relay and fuel injectors until a valid code is received from the remote Radio Frequency (RF) handset.

The passive anti-theft system features 2 levels of protection:

- Engine immobilization only
  - Engine immobilization plus perimetric and volumetric anti-theft alarm protection.
- For additional information, refer to: [Anti-Theft - Active](#) (419-01A Anti-Theft - Active, Description and Operation).

The anti-theft system module activates the engine immobilization system 30 seconds after the key is removed from the ignition switch and the driver's door is opened. If the key is removed from the ignition switch and the drivers door isn't opened, the anti-theft system module will activate the engine immobilization system after a period of 5 minutes.

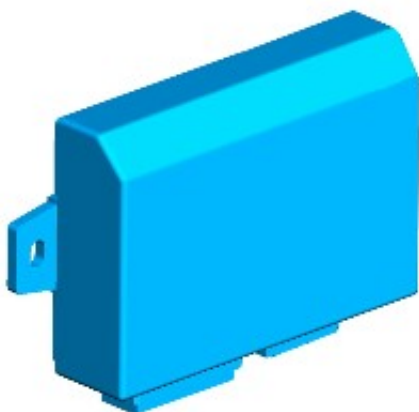
## TRANSCIEVER COIL



E87500

The transceiver coil comprises a coil mounted around the ignition barrel. When the ignition switch is turned to position II, the anti-theft system module provides a permanent battery voltage feed and a pulsed voltage feed to the transceiver coil. This creates a magnetic field around the ignition barrel, which collapses and restores in relation to the pulsed power feed from the anti-theft system module. The fluctuating magnetic field activates the remote RF handset which transmits a mobilization signal.

## ANTI-THEFT SYSTEM MODULE



E83589

The anti-theft system module is located behind the instrument cluster and works in conjunction with the ECM to control the passive anti-theft system. The anti-theft system module receives a permanent battery supply from the battery junction box (BJB) and an ignition switch supply from the central junction box (CJB).

For additional information, refer to: [Battery and Cables](#) (414-01 Battery, Mounting and Cables, Description and Operation).

A mobilization code is transmitted to the anti-theft system module by the remote RF handset. The mobilization code is received via the anti-theft system module antenna, which hangs below the module. The anti-theft system module determines if a valid code is received from the remote RF handset by comparing the received code with one stored in its