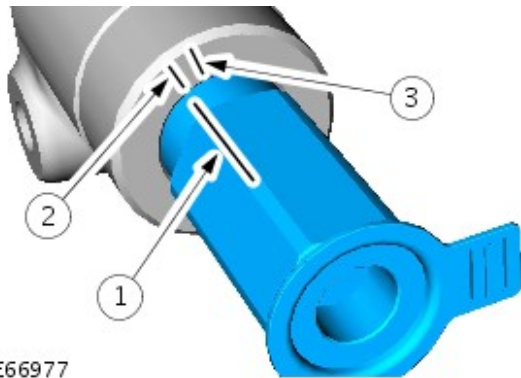


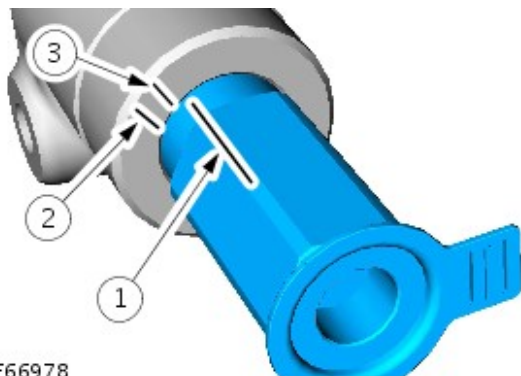
Draw line (2) 5 mm (0.12 inches) from line (1).



E66977

5. Tighten the fuel pressure relief valve and make sure that line (1) passes line (3).

- Tighten to 172 Nm (127 lb.ft).



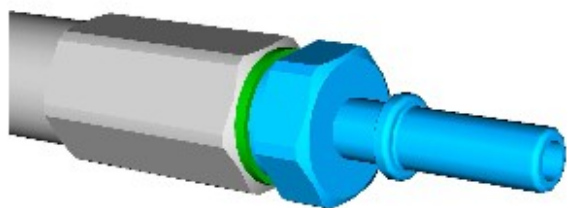
E66978

6. If line (1) does not pass line (3) remove the fuel pressure relief valve and inspect for contamination and thread damage to the fuel rail. Reassemble from step 2.

7. **NOTE: Remove and discard the blanking caps.**

Install the fuel spigot.

- Clean the component mating faces.
- Tighten to 20 Nm (15 lb.ft).



E87930

8. Connect the battery ground cable.
For additional information, refer to: [Battery Connect](#) (414-01 Battery, Mounting and Cables, General Procedures).
9. Carry out a fuel system leak test using the Land Rover approved diagnostic system.