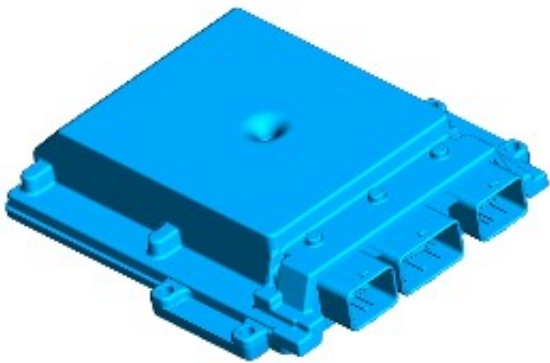


memory.

The anti-theft system module also controls;

- the active anti-theft system.
For additional information, refer to: [Anti-Theft - Active](#) (419-01A Anti-Theft - Active, Description and Operation).
- the central locking system.
For additional information, refer to: [Handles, Locks, Latches and Entry Systems](#) (501-14 Handles, Locks, Latches and Entry Systems, Description and Operation).
- interior lighting.
For additional information, refer to: [Interior Lighting](#) (417-02 Interior Lighting, Description and Operation).
- the hazard flashers.
For additional information, refer to: [Exterior Lighting](#) (417-01 Exterior Lighting, Description and Operation).

ENGINE CONTROL MODULE



E87501

The ECM is mounted on the engine compartment bulkhead and works in conjunction with the anti-theft system module to control the passive anti-theft system.

For additional information, refer to: [Electronic Engine Controls](#) (303-14 Electronic Engine Controls - 2.4L Duratorq-TDCi HPCR (103kW/140PS) - Puma, Description and Operation).

CONTROL DIAGRAM

- NOTE: **A** = Hardwired; **D** = High speed controller area network (CAN) bus