

Fuel Charging and Controls - 2.4L Duratorq-TDCi HPCR (103kW/140PS) - Puma - Fuel Pressure Relief Valve

Removal and Installation

Removal

• WARNINGS:



The spilling of fuel is unavoidable during this operation. Make sure that all necessary precautions are taken to prevent fire and explosion.



Do not carry or operate cellular phones when working on or near any fuel related components. Highly flammable vapors are always present and may ignite. Failure to follow these instructions may result in personal injury.



Do not smoke or carry lighted tobacco or open flame of any type when working on or near any fuel related components. Highly flammable vapors are always present and may ignite. Failure to follow these instructions may result in personal injury.



If fuel contacts the eyes, flush the eyes with cold water or eyewash solution and seek immediate medical attention.



Wash hands thoroughly after fuel handling, as prolonged contact may cause irritation. Should irritation develop, seek medical attention.

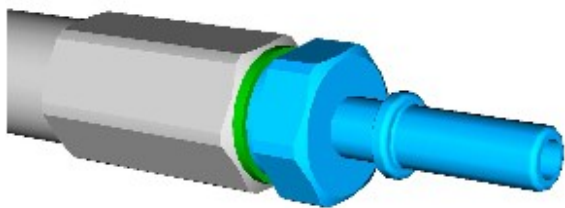


Do not carry out any repairs to the fuel system with the engine running. The fuel pressure within the system can be as high as 2000 bar (29,008 lb-sq-in). Failure to follow this instruction may result in personal injury.



CAUTION: Diesel fuel injection equipment is manufactured to very precise tolerances and fine clearances. It is therefore essential that absolute cleanliness is observed when working with these components. Always install new blanking plugs to any open orifices or lines. Failure to follow this instruction may result in foreign matter ingress to the fuel injection system.

1. Disconnect the battery ground cable.
For additional information, refer to: [Battery Disconnect and Connect](#) (414-01 Battery, Mounting and Cables, General Procedures).
2. Using the pneumatic vacuum gun, vacuum foreign material from the high-pressure fuel supply lines, the fuel rails and the fuel injection pump.
For additional information, refer to: [Fuel Injection Component Cleaning](#) (303-04A Fuel Charging and Controls - 2.4L Duratorq-TDCi HPCR (103kW/140PS) - Puma, General Procedures).
3. Remove the fuel spigot.



E87930

4. Remove and discard the fuel pressure relief valve.



E66991