

TABLE OF CONTENTS

Air Filters & Manifolds	8, 9
Battery & Rotating Electrics	21
Brakes - Front and Rear	20
Brake Pedals & Brake System	19
Cooling System	7
Cylinder Block	3, 4
Cylinder Head	5
Table of Contents & Design Modification History	2
Differential	17
Door Fittings	28
Engine Controls	6
Engine Electrics	22
Exhaust System & Manifolds	10
Front Axle & Drive Shafts	16
Front Body Fittings	29
Fuel System	8
Glazing & Mirrors	31
Handbrake	19
Heating & Air Conditioning	27
Back Door & Rear Body Fittings	30
Injection Equipment	9
Instruments & Switches	25
Interior Trim	31
Lighting	23
Miscellaneous Electrics	26
Oil Coolers	6
Propeller Shafts	12
Rear Axle & Drive Shafts	17
Rear Body Fittings	30
Suspension - Front	14
Suspension - Rear	15
Steering	13
Transmission - Automatic	11
Transmission - Transfer Box	11
Transmission - Manual	12
Wheels & Tires	18
Wipers & Washers	24

Discovery I Parts Section & Design Modification History

Welcome to our **ALL NEW** parts section for Discovery I. Here you will find an expanded array of available hard parts for Discovery I vehicles including many helpful part explosion drawings designed to not only help you identify parts but easily understand parts assembly. You will also find below a thorough North American spec. design modification history that highlights all major vehicle changes for Disco I's in North America.

Discovery Series II Owners, Take Note: This parts section is inclusive of Discovery I parts only at this time. We are in development currently on an expanded parts section to include Discovery Series II parts. This new section will be available in future publications—stay tuned!

Vehicle Identification Information

Discovery I model years are easily identified by the two-letter suffix at the end of the vehicle's identification number (VIN.) The preceding three digits (either 128 or 124) also denote manual or automatic transmissions. With your VIN # and model year identified, you can easily identify your engine, gearbox and transfer case.

VIN	Model Year/Trans
SALJY128*RA	1994 manual
SALJY124*RA	1994 auto
SALJY128*SA	1995 manual
SALJY124*SA	1995 auto
SALJY128*TA	1996 manual
SALJY124*TA	1996 auto
SALJY128*VA	1997 manual
SALJY124*VA	1997 auto
SALJY128*WA	1998 manual
SALJY124*WA	1998 auto
SALJY124*XA	1999 auto

Design Modifications:

The North American spec. Discovery I went through a limited number of design modifications through its history. Introduced in North America in April of 1994, the vehicle was produced through 1999 and then replaced by Discovery Series II beginning with the mid-1999 model year. Standard on all Discovery I vehicles were:

- Dual air bags
- Anti-loc brakes
- 3.9 liter engine (through 1995); 4.0 liter engine (1996 on)
- Two-speed LT230 transfer box
- Five-speed R380 manual transmission or four-speed automatic ZF transmission

The following design change information is prepared by VIN suffix/model year break and highlights the major vehicle design changes for the given model year.

PRICES SUBJECT TO CHANGE.
Call for the Latest Pricing and Availability.

Engine Identification:

Displ.	Number	Comp Ratio	App. Years
3.9	35D	9.35:1	1994 manual
3.9	36D	9.35:1	1994 auto
3.9	35D	9.35:1	1995 manual
3.9	36D	9.35:1	1995 auto
4.0	50D	9.35:1	1996 manual
4.0	50D	9.35:1	1996-99 auto

Gearbox & Transfer Case Identification:

Gearbox: (1994-99) R380 manual 53A00001 5 spd.; ZF 4-spd. (no prefix) auto.
Transfer Case: (1994-99) LT230T 28D00001

VIN Suffix RA

(1994 model year)

- Year of introduction.

VIN Suffix SA

(1995 model year)

- No significant changes

VIN Suffix TA

(1996 model year)

- Introduction of 4.0 liter engine with GEMS fuel injection system (Generic Engine Management System).
- Three trim levels available:
- SD: cloth interior with 5-speed transmission standard automatic optional.)
- SE and SE7: leather interior, twin sunroofs and eight way adjustable power seats standard. SE7 model had rear cab jump seats standard and a rear hydraulic step. The SE7 also included rear cab air conditioning.

TIL. No.	Part No.	Description	Qty. Rqd.
----------	----------	-------------	-----------

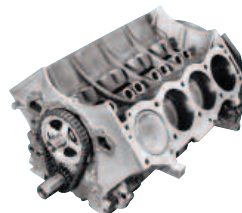
CYLINDER BLOCK

REMARKS LEGEND -

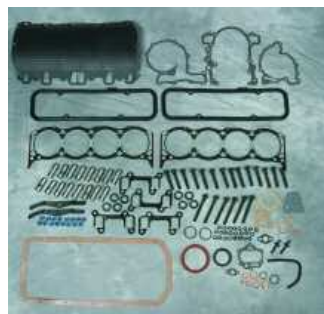
Engine (e) numbers:

35D = 3.9 liter, manual transmission,
distributor ignition
36D = 3.9 liter, automatic transmission,
distributor ignition
50D = 4.0 liter, electronic ignition

MONEY-SAVING KITS NOTED IN RED TYPE



1
ENGINE, SHORT 4.0 Liter
#9257A



2
ENGINE KIT
#9257ABPK1

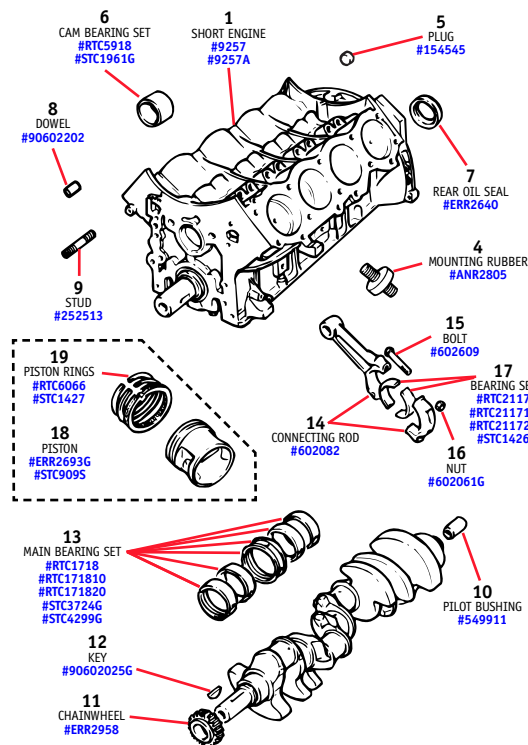


3
GASKET SET
#STC2823

- | | | | |
|---|-----------|--|---|
| 1 | 9257 | ENGINE, short, 3.9 liter, Genuine, new unit
(e) 35D, 36D engines | 1 |
| | 9257A | ENGINE, short, 4.0 liter, Genuine, new unit
Replacement for 3.9 liter units | 1 |
| 2 | 9257ABPK1 | ENGINE KIT, for 9257 and 9257A engines
Contains composite head gaskets set,
conversion gasket set, 16 hydraulic lifters,
all head bolts | 1 |
| 3 | STC2823 | GASKET SET, conversion | 1 |

TIL. No.	Part No.	Description	Qty. Rqd.
----------	----------	-------------	-----------

Cylinder Block, Con Rods & Bearings

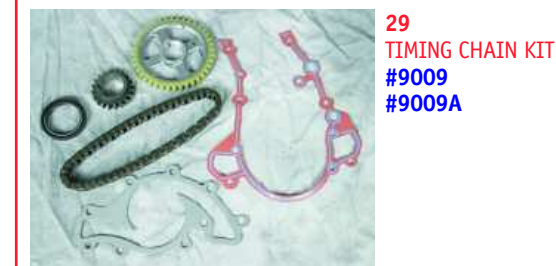
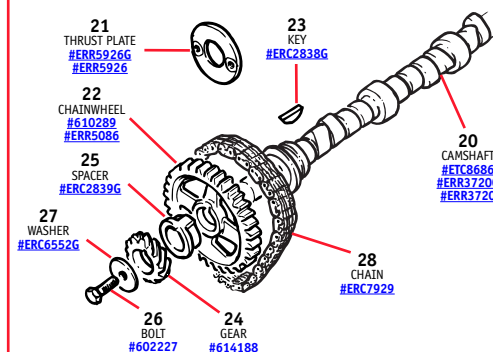


- | | | | |
|----|-----------|---|----|
| 4 | ANR2805 | MOUNTING RUBBER, engine | 2 |
| 5 | 154545 | PLUG, breather hose | 1 |
| 6 | RTC5918 | BEARING SET, camshaft
(e) 35D, 36D engines | 1 |
| | STC1961G | BEARING SET, camshaft, Genuine
(e) 50D engines | 1 |
| 7 | ERR2640 | OIL SEAL, crankshaft, rear | 1 |
| 8 | 90602202 | DOWEL, locating front cover to block | 2 |
| 9 | 252513 | STUD, front cover
(e) 35D, 36D engines | 1 |
| 10 | 549911 | PILOT BUSHING, crankshaft | 1 |
| 11 | ERR2958 | CHAINWHEEL, crankshaft | 1 |
| 12 | 90602025G | KEY, chainwheel, Genuine | 1 |
| 13 | RTC1718 | MAIN BEARING SET, standard
Through (e) 35D08966B, 36D25524B | 1 |
| | RTC171810 | MAIN BEARING SET, + 0.010
Through (e) 35D08966B, 36D25524B | 1 |
| | RTC171820 | MAIN BEARING SET, + 0.020
Through (e) 35D08966B, 36D25524B | 1 |
| | STC3724G | MAIN BEARING SET, standard, Genuine
From (e) 35D08967B, 36D25525B on | 1 |
| | STC4299G | MAIN BEARING SET, standard, Genuine
(e) 50D engines | 1 |
| 14 | 602082 | CONNECTING ROD ASSEMBLY
(e) 35D, 36D engines | 8 |
| 15 | 602609 | BOLT, connecting rod
(e) 35D, 36D engines | 16 |
| 16 | 602061G | NUT, connecting rod, Genuine
(e) 35D, 36D engines | 16 |

TIL. No.	Part No.	Description	Qty. Rqd.
----------	----------	-------------	-----------

- | | | | |
|----|-----------|--|---|
| 17 | RTC2117 | BEARING SET, big end, standard
(e) 35D, 36D engines | 1 |
| | RTC211710 | BEARING SET, big end, + 0.010
(e) 35D, 36D engines | 1 |
| | RTC211720 | BEARING SET, big end, + 0.020
(e) 35D, 36D engines | 1 |
| | STC1426 | BEARING SET, big end, standard, Genuine
(e) 50D engines | 1 |
| 18 | STC909S | PISTON ASSEMBLY, standard
(e) 35D, 36D engines | 8 |
| 19 | RTC6066S | PISTON RINGS, piston set, standard
(e) 35D, 36D engines | 8 |
| | STC1427 | PISTON RINGS, piston set, standard
(e) 50D engines | 8 |
| 20 | ETC8686 | CAMSHAFT (e) 35D, 36D engines | 1 |
| | ERR3720 | CAMSHAFT (e) 50D engines | 1 |
| | ERR3720G | CAMSHAFT, Genuine
(e) 50D engines | 1 |

Camshaft, Chainwheel & Gear



29
TIMING CHAIN KIT
#9009
#9009A

- | | | | |
|----|----------|---|---|
| 21 | ERR5926 | THRUST PLATE, camshaft,
(e) 35D, 36D engines | 1 |
| 22 | 610289 | CHAINWHEEL, camshaft
(e) 35D, 36D engines | 1 |
| | ERR5086 | CHAINWHEEL, camshaft
(e) 50D engines | 1 |
| 23 | ERC2838G | KEY, chainwheel, Genuine
(e) 35D, 36D engines | 1 |
| 24 | 614188 | GEAR, distributor drive
(e) 35D, 36D engines | 1 |
| 25 | ERC2839G | SPACER, sprocket, Genuine
(e) 35D, 36D engines | 1 |
| 26 | 602227 | BOLT, sprocket
(e) 35D, 36D engines | 1 |



TO ORDER, CALL **1-800-533-2210**

Engine Components

Atlantic British has recently made a special purchase of remanufactured differentials, transmissions, transfer cases and short block engines. Now you can rebuild your entire drive train at a practical price. (Our 3.9 engine, for instance, costs less than an overhaul of your existing 3.9!) And of course, we offer all the gaskets, bearings, bolts, seals and valves you need to do the complete job. Call us, we'll be glad to outfit you with everything you need.

K & N Oil Filter

The best oil filter we've seen, the K&N Performance Gold Oil Filter's heavy-duty bonded construction features an anti-drainback valve to eliminate dry starts and prevents dirty oil from draining back into your crankcase. An inexpensive way to help protect your engine. (Does not fit Discovery Series II.)



K&N Oil Filters - Long (1168KN)

K&N Oil Filter - Short (3340KN)

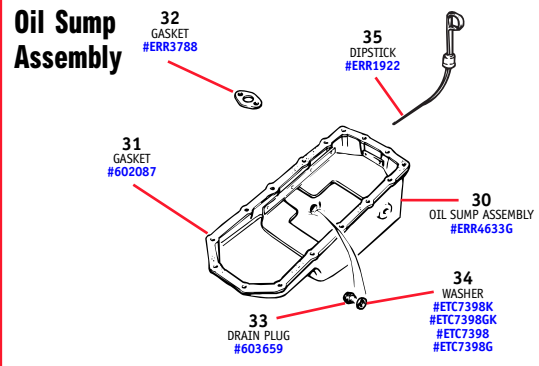
GET THE COMPLETE K&N AIR AND OIL FILTER KIT INCLUDING AIR FILTER, AIR FILTER CLEANER AND SHORT OIL FILTER AT A VALUE PRICE!

Complete K&N Air & Oil Filter Kit
Discovery I (9251K)

TIL No.	Part No.	Description	Qty. Rqd.
---------	----------	-------------	-----------

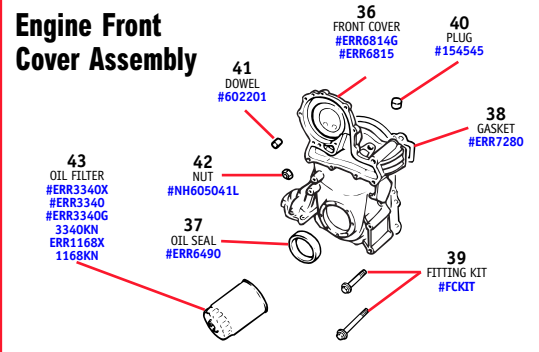
27	ERC6552G	WASHER, sprocket, Genuine (e) 35D, 36D engines	1
28	ERC7929	CHAIN, timing	1
29	9009	TIMING CHAIN KIT, with sprockets, gaskets and oil seal (e) 35D, 36D engines	1
9009A		TIMING CHAIN KIT, with sprockets, gaskets and oil seal (e) 50D engines	1

Oil Sump Assembly



30	ERR4633G	OIL SUMP ASSEMBLY, Genuine	1
31	602087	GASKET, oil sump	1
32	ERR3788	GASKET, oil pick up	1
33	603659	DRAIN PLUG, oil sump	1
34	ETC7398K ETC7398GK	WASHER, sealing, drain plug, pack of 6 WASHER, sealing, drain plug, pack of 6, Genuine	1
	ETC7398	WASHER, sealing, drain plug	1
	ETC7398G	WASHER, sealing, drain plug, Genuine	1
35	ERR1922	DIPSTICK ASSEMBLY (e) 35D, 36D engines	1

Engine Front Cover Assembly



36	ERR6814G	FRONT COVER, engine, Genuine (e) 35D, 36D engines	1
	ERR6815	FRONT COVER, engine, From (e) 50D06547A on	1
	FCKIT	BOLT KIT, front engine cover (e) 35D, 36D	1
	FCKITA	BOLT KIT, front engine cover (e) 50D22383A	1
37	ERR6490	OIL SEAL, front cover, twin lip type From (e) 50D06547A on	1

TIL No.	Part No.	Description	Qty. Rqd.
---------	----------	-------------	-----------

38	ERR7280	GASKET, front cover	1
39	FCKIT	FITTING KIT, front cover, includes all bolts and washers (e) 35D, 36D and 50D engines	1
40	154545	PLUG, front cover (e) 35D, 36D engines	1
41	602201	DOWEL, locating water pump (e) 35D, 36D engines	2
42	NH605041L	NUT, front cover stud (e) 35D, 36D engines	1
43	ERR3340X	OIL FILTER, short, pack of 6	1
	ERR3340	OIL FILTER, short	1
	ERR3340G	OIL FILTER, short, Genuine	1
	3340KN	OIL FILTER, short, K&N premium	1
	ERR1168X	OIL FILTER, long, pack of 6	1
	ERR1168	OIL FILTER, long	*NLA
	1168KN	OIL FILTER, long, K&N premium	1

TECH TIP:

Oil Pump & Front Engine Cover



The oil pump and front engine cover are one integrated unit, therefore you must replace the cover if you're going to replace the oil pump. When changing the front engine cover / oil pump, also consider replacing your water pump, hoses and polyvee 'serpentine' belt at the same time since they all must be removed and are probably worn. We offer complete water pump assemblies, hose kits and water pump hardware kits to make the job easier, see page 31 for more details.

*NLA = No Longer Available

PRICES SUBJECT TO CHANGE.
Call for the Latest Pricing and Availability.

TIL. No.	Part No.	Description	Qty. Rqd.
----------	----------	-------------	-----------

CYLINDER HEAD

REMARKS LEGEND -

Engine (e) numbers:

35D = 3.9 liter, manual transmission,
distributor ignition

36D = 3.9 liter, automatic transmission,
distributor ignition

50D = 4.0 liter, electronic ignition

MONEY-SAVING KITS NOTED IN RED TYPE



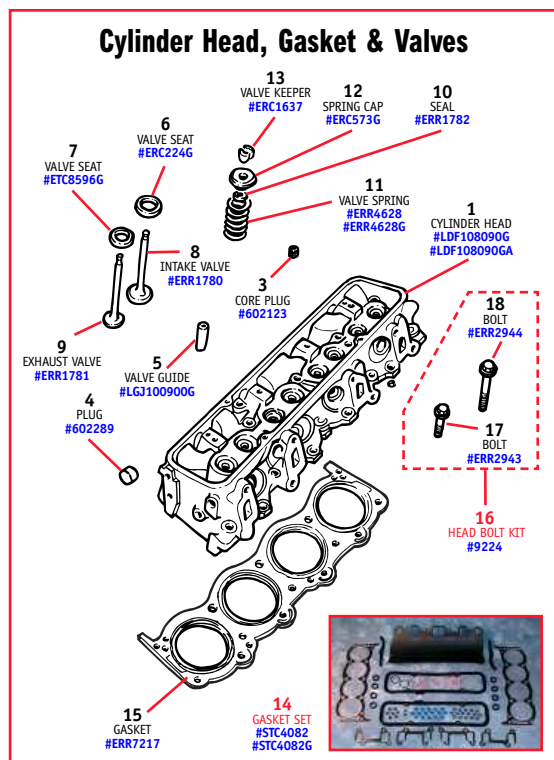
1
CYLINDER HEAD ASSEMBLY
#LDF108090G
#LDF108090GA



2
CYLINDER
HEAD
REBUILD KIT
#9013

1	LDF108090G	CYLINDER HEAD, bare, with guides only, new	2
	<i>Call for application information</i>		
	LDF108090GA	CYLINDER HEAD, complete with valves, new	2
	<i>Call for application information</i>		
2	9013	REBUILD KIT, cylinder head	1
	<i>(e) 35D, 36D; through (e) 50D22383A</i>		
3	602123	PLUG, core	4
4	602289	PLUG, cup	4
5	LGJ100900G	GUIDE, valve, Genuine	16
6	ERC224G	SEAT, intake valve, Genuine	8
7	ETC8596G	SEAT, exhaust valve, Genuine	8
8	ERR1780	VALVE, intake	8
9	ERR1781	VALVE, exhaust	8
	<i>(e) 35D, 36D; up to (e) 50D22383A</i>		
10	ERR1782	SEAL, intake valve stem	8
11	ERR4628	SPRING, valve	16
	ERR4628G	SPRING, valve, Genuine	16
12	ERC573G	CAP, valve spring	16
13	ERC1637	VALVE KEEPER	32

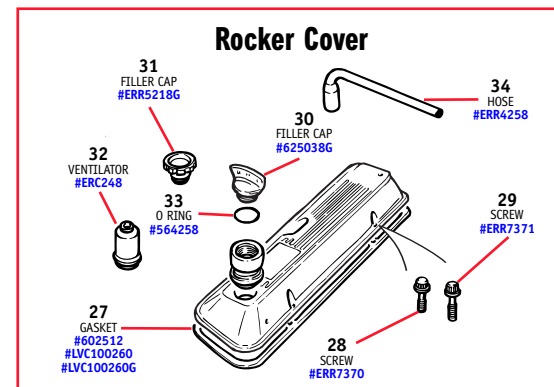
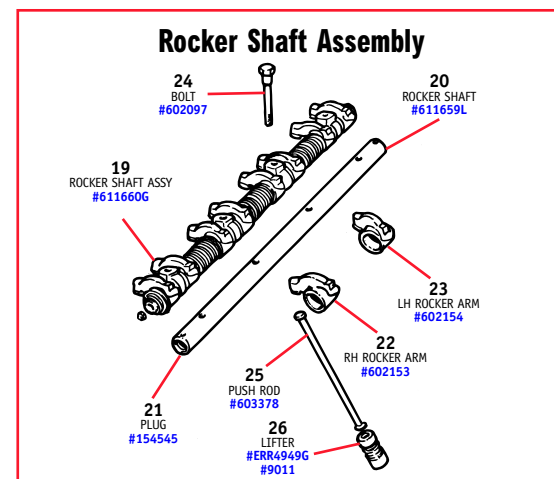
TIL. No.	Part No.	Description	Qty. Rqd.
----------	----------	-------------	-----------



14	STC4082	GASKET SET, composite, cylinder head	1
	STC4082G	GASKET SET, composite, cylinder head, Genuine	1
15	ERR7217	GASKET, composite, cylinder head	2
16	9224	HEAD BOLT KIT <i>Includes 17 and 18</i>	1
17	ERR2943	BOLT, cylinder head, short	14
18	ERR2944	BOLT, cylinder head, long	6
19	611660G	ROCKER SHAFT ASSEMBLY, Genuine	2
20	611659L	SHAFT, rocker	2
21	154545	PLUG, rocker shaft ends	4
22	602153	ROCKER ARM, RH	8
23	602154	ROCKER ARM, LH	8
24	602097	BOLT, rocker shaft assembly to cylinder head	8
25	603378	PUSH ROD	16
26	ERC494G	LIFTER - GENUINE	16
	9011	LIFTER KIT, set of 16	1
27	602512	GASKET, valve cover, cork	2
	LVC100260	GASKET, valve cover, rubber	2
	LVC100260G	GASKET, valve cover, rubber, Genuine	*NLA
28	ERR7370	SCREW, valve cover, short	4
29	ERR7371	SCREW, valve cover, long	4
30	625038G	CAP, oil filler, Genuine	1
	<i>(e) 35D, 36D engines</i>		
31	ERR5218G	CAP, oil filler, Genuine	1
	<i>(e) 50D engines</i>		
32	ERC248	VENTILATOR, flame trap	1
	<i>(e) 35D, 36D engines</i>		
33	564258	O RING, filler cap and ventilator,	2/1
	<i>Qty reduced on (e) 50D engines</i>		
34	ERR4258	HOSE, valve cover to ram housing	1

*NLA = No Longer Available

TIL. No.	Part No.	Description	Qty. Rqd.
----------	----------	-------------	-----------



TECH TIP: Head Bolts & Composite Gaskets

Atlantic British recommends that head bolts never be re-used, as they stretch and will not re-torque properly, which can cause leaks. We also recommend replacing original gaskets with composite gaskets, as they seal better than standard original gaskets. We recommend only composite replacement gaskets - purchase the individual head gasket or get the gasket set for a complete cylinder head valve job. (see items 14 & 15).

Cylinder Head



TO ORDER, CALL **1-800-533-2210**

ILL. No.	Part No.	Description	Qty. Rqd.
----------	----------	-------------	-----------

OIL COOLERS

REMARKS LEGEND -

Engine (e) numbers:

36D = 3.9 liter, automatic transmission,
distributor ignition

Vehicle i.d. (v) numbers:

TA = 1996 model year;

VA = 1997 model year

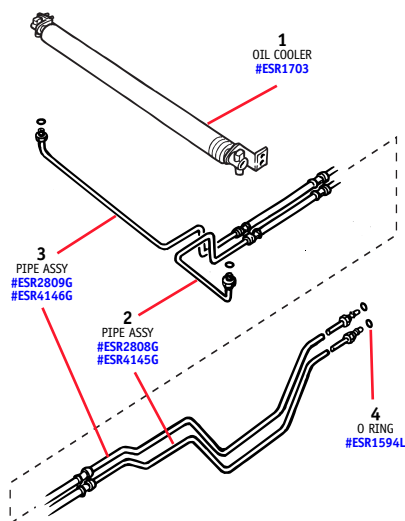
MONEY-SAVING KITS NOTED IN RED TYPE



1
OIL COOLER
#ESR1703

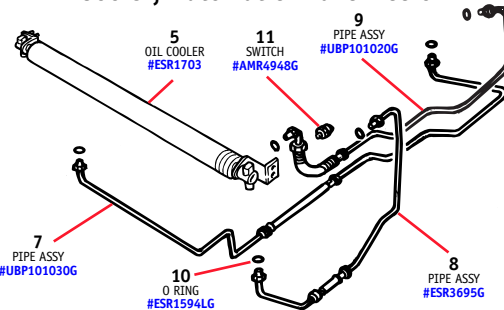
1	ESR1703	OIL COOLER ASSEMBLY, transmission	1
2	ESR2808G	PIPE ASSEMBLY, transmission to cooler, Genuine	1
	ESR4145G	Manual transmission; through 1996 Model Year PIPE ASSEMBLY, transmission to cooler, Genuine	1
3	ESR2809	Manual transmission; from 1997 Model Year PIPE ASSEMBLY, cooler to transmission, Manual transmission; through 1996 Model Year	1
	ESR4146G	PIPE ASSEMBLY, cooler to transmission, Genuine	1
4	ESR1594L	Manual transmission; from 1997 Model Year O RING, oil cooler pipes	4

Cooler, Manual Transmission



ILL. No.	Part No.	Description	Qty. Rqd.
----------	----------	-------------	-----------

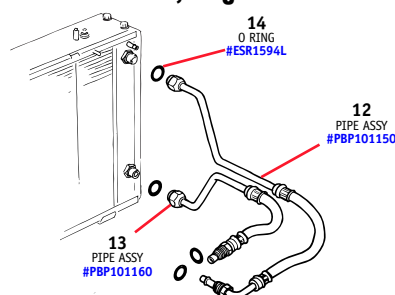
Cooler, Automatic Transmission



6
PIPE KIT
#9355B

5	ESR1703	OIL COOLER ASSEMBLY, transmission	1
6	9355B	OIL COOLER PIPE KIT, transmission Automatic transmission; includes items 7, 8, 9	1
7	UBP101030	PIPE ASSEMBLY, transmission to cooler, Genuine Automatic transmission	1
8	ESR3695	PIPE ASSEMBLY, cooler to cooler, Genuine Automatic transmission	1
9	UBP101020	PIPE ASSEMBLY, cooler to transmission, Genuine Automatic transmission	1
10	ESR1594L	O RING, oil cooler pipes, Genuine	6
11	AMR4948	SWITCH, oil temperature, Genuine Automatic transmission; from (e) 36D45567B on	1

Cooler, Engine



12	PBP101150	PIPE ASSEMBLY, engine to radiator, upper Automatic transmission	1
13	PBP101160	PIPE ASSEMBLY, radiator to engine, lower Automatic transmission	1
14	ESR1594L	O RING, oil cooler pipes	4

ILL. No.	Part No.	Description	Qty. Rqd.
----------	----------	-------------	-----------

ENGINE CONTROLS

REMARKS LEGEND -

Vehicle i.d. (v) numbers:

TA = 1996 model year

MONEY-SAVING KITS NOTED IN RED TYPE



1
ACTUATING LINK
#ETC7875G

1	ETC7875G	ACTUATING LINK ASSEMBLY, cruise control, Genuine	1
2	YBE100540G	TRANSDUCER, vehicle speed sensing, Genuine	1
	11H1781L	RUBBER PAD, accelerator pedal	1
	ANR5327	ACCELERATOR CABLE From (v) TA700854 and TA531680 on	1
	RTC4854	CABLE KICKDOWN Automatic transmission	1
	YRC100350G	CASSETTE SPIRAL, cruise control, Genuine	1
	PRC6260G	VACUUM CONTROL UNIT, cruise control, Genuine	1



2
VEHICLE SPEED
TRANSDUCER
#YBE100540G

TECH TIP: Belts, Hoses, Coolant



We always recommend that when you change one hose, you should change all related hoses. The same holds true for belts—check your belts for tiny cracks. If one belt has failed and the others have cracks, change all of your belts at the same time. Rule of thumb—if one has failed, the others are probably not far behind (This is why we sell these parts in complete money-saving kits; the job is much easier and less time-consuming this way.) Lastly, we recommend you change your engine coolant as well at recommended intervals, as it loses its protective temperature range over time and flushing helps remove radiator-clogging deposits. **Note:** Land Rover recommends a coolant change every 30K miles.

PRICES SUBJECT TO CHANGE.
Call for the Latest Pricing and Availability.

TIL. No.	Part No.	Description	Qty. Rqd.
----------	----------	-------------	-----------

COOLING SYSTEM

REMARKS LEGEND -

Engine (e) numbers:

35D = 3.9 liter, manual transmission,
distributor ignition
36D = 3.9 liter, automatic transmission,
distributor ignition
50D = 4.0 liter, electronic ignition

Vehicle i.d. (v) numbers:

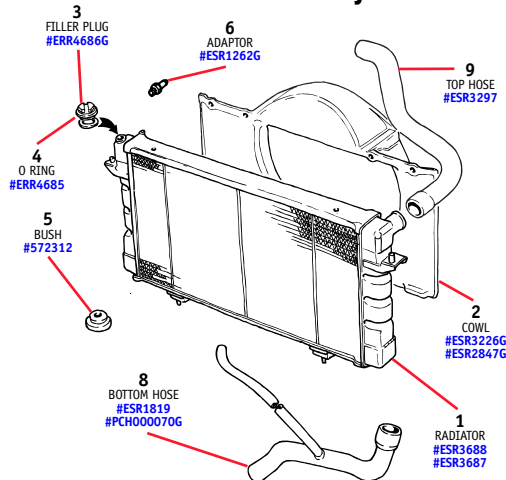
RA = 1994 model year; TA = 1996 my

MONEY-SAVING KITS NOTED IN RED TYPE



7
HOSE KIT
#9370D
#9370DA
#9370DB
#9370DC

Radiator Assembly

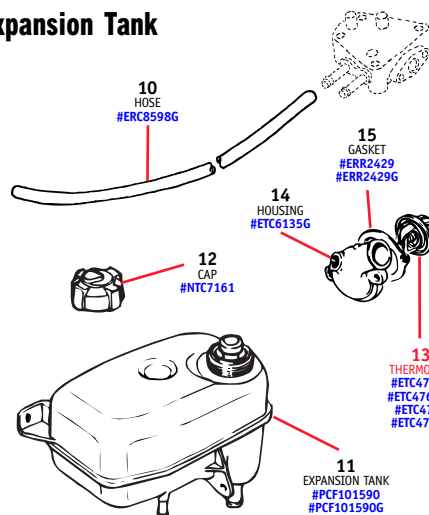


- | | | | |
|---|----------|---|---|
| 1 | ESR3688 | RADIATOR ASSEMBLY
Manual transmission; from 1996 Model Year | 1 |
| | ESR3687 | RADIATOR ASSEMBLY
Automatic transmission; from 1996 Model Year | 1 |
| 2 | ESR3226G | COWL, radiator fan, upper, Genuine | 1 |
| | ESR2847G | COWL, radiator fan, lower, Genuine | 1 |
| 3 | ERR4686G | PLUG, radiator filler, Genuine | 1 |
| 4 | ERR4685 | O RING, radiator filler plug | 1 |
| 5 | 572312 | BUSH, radiator mounting | 4 |

TIL. No.	Part No.	Description	Qty. Rqd.
----------	----------	-------------	-----------

- | | | | |
|---|------------|---|------|
| 6 | ESR1262G | ADAPTOR, oil cooler pipe, Genuine | 2 |
| 7 | 9370D | HOSE KIT, cooling and heater
(e) 35D, 36D through (v) RA098379;
for system with water valve | 1 |
| | 9370DA | HOSE KIT, cooling and heater
(e) 35D, 36D from (v) RA098380 on;
for system without heater valve | 1 |
| | 9370DB | HOSE KIT, cooling and heater
(e) 50D engines; not advanced evaporative
loss models | 1 |
| | 9370DC | HOSE KIT, cooling and heater
(e) 50D engines; advanced evaporative loss models | 1 |
| | HSCLK | CLAMP KIT, radiator and heater hoses
Includes 16 clamps | *NLA |
| 8 | ESR1819 | HOSE, bottom
Not advanced evaporative loss models | 1 |
| | PCH000070G | HOSE, bottom, Genuine
Advanced evaporative loss models | 1 |
| 9 | ESR3297 | HOSE, top
From (v) RA098380 on | 1 |

Expansion Tank

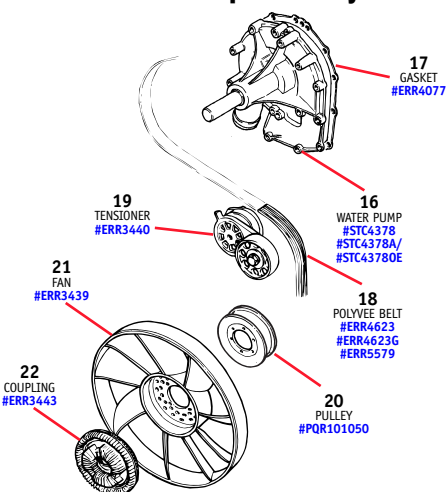


- | | | | |
|----|---|---|------|
| 10 | ERC8598G | HOSE, manifold jacket, Genuine | 1 |
| 11 | PCF101590 | EXPANSION TANK | 1 |
| | PCF101590G | EXPANSION TANK, Genuine | 1 |
| 12 | NTC7161 | CAP, expansion tank | 1 |
| 13 | ETC4765K | THERMOSTAT, 88C, with gasket | 1 |
| | ETC4765GK | THERMOSTAT, 88C, with gasket, Genuine | 1 |
| | ETC4765 | THERMOSTAT 88C | 1 |
| | ETC4765G | THERMOSTAT, 88C, Genuine | 1 |
| 14 | ETC6135G | HOUSING, thermostat, Genuine
(e) 35D, 36D engines | 1 |
| 15 | ERR2429 | GASKET, thermostat housing | 1 |
| | ERR2429G | GASKET, thermostat housing, Genuine | 1 |
| 16 | STC4378A/
STC4378OE
STC4378G
STC4378FK | WATER PUMP ASSEMBLY, Genuine | 1 |
| | ERR4077 | BOLT KIT, water pump | *NLA |
| 17 | ERR4077 | GASKET, water pump | 1 |
| 18 | ERR4623 | BELT, drive, polyvee
(e) 35D, 36D engines | 1 |
| | ERR4623G | BELT, drive, polyvee, Genuine
(e) 35D, 36D engines | 1 |
| | ERR5579 | BELT, drive, polyvee
(e) 50D engines | 1 |

*NLA = No Longer Available

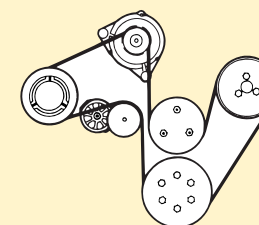
TIL. No.	Part No.	Description	Qty. Rqd.
----------	----------	-------------	-----------

Water Pump Assembly



- | | | | |
|----|-----------|--|------|
| 19 | ERR3440 | TENSIONER, pulley, polyvee belt | 1 |
| | ERR3440G | TENSIONER, pulley, polyvee belt, Genuine | *NLA |
| 20 | PQR101050 | PULLEY, fan and water pump | 1 |
| 21 | ERR3439 | FAN, radiator | 1 |
| 22 | ERR3443 | VISCOUS COUPLING, radiator fan | 1 |

TECH TIP: Polyvee 'Serpentine' Belt Change



Replacing your water pump polyvee or 'serpentine' belt is relatively simple (see item 18) - just use a wrench to pry back the belt tensioner. The hard part is remembering how to re-route the belt when you're done. This illustration should help. This is a good time to replace the belt tensioner (see item 19). A worn out tensioner can fail, destroying the new belt and leaving you stranded.



TO ORDER, CALL **1-800-533-2210**

ILL. No.	Part No.	Description	Qty. Rqd.
----------	----------	-------------	-----------

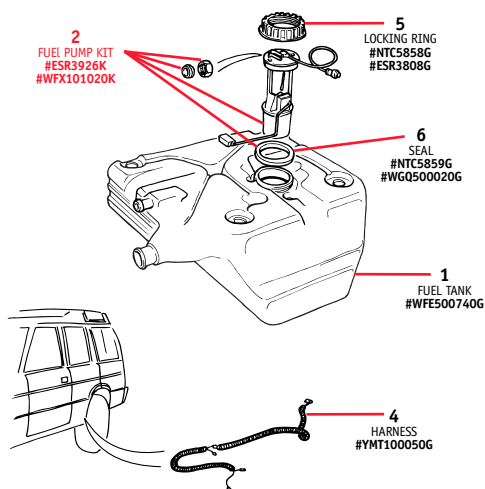
FUEL SYSTEM

MONEY-SAVING KITS NOTED IN RED TYPE



3
FUEL PUMP
#ESR3926
#WFX101020

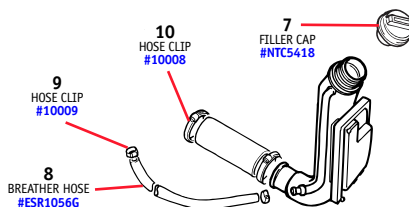
Fuel Tank Assembly



- | | | | |
|---|------------|--|---|
| 1 | WFE500740G | FUEL TANK ASSEMBLY, Genuine
Not advanced evaporative loss models | 1 |
| 2 | ESR3926K | KIT, fuel pump & sender unit
Not advanced evaporative loss models;
includes pump, sealing ring, pipe nuts & olives | 1 |
| | WFX101020K | KIT, fuel pump & sender unit, plus seal,
Advanced evaporative loss models | 1 |
| 3 | ESR3926 | FUEL PUMP AND SENDER UNIT
Not advanced evaporative loss models | 1 |
| | WFX101020 | FUEL PUMP AND SENDER UNIT
Advanced evaporative loss models | 1 |
| 4 | YMT100050G | HARNESS, fuel pump & sender unit, Genuine
Advanced evaporative loss models | 1 |
| 5 | NTC5858G | LOCKING RING, fuel pump to tank, Genuine
Not advanced evaporative loss models | 1 |
| | ESR3808G | LOCKING RING, fuel pump to tank, Genuine
Advanced evaporative loss models | 1 |
| 6 | NTC5859G | SEAL, fuel pump to tank, Genuine
Not advanced evaporative loss models | 1 |
| | WGQ500020G | SEAL, fuel pump to tank, Genuine
Advanced evaporative loss models | 1 |

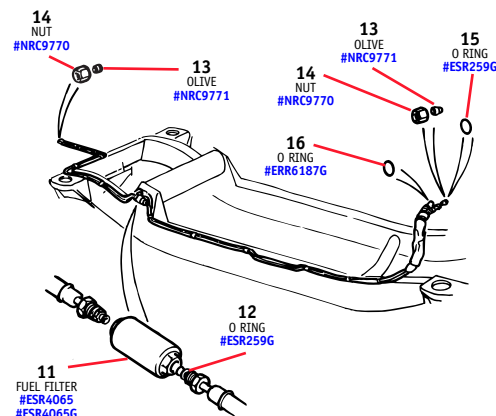
ILL. No.	Part No.	Description	Qty. Rqd.
----------	----------	-------------	-----------

Fuel Filler



- | | | | |
|----|----------|---|-----|
| 7 | NTC5418 | CAP, fuel filler
Not advanced evaporative loss models | 1 |
| 8 | ESR1056G | HOSE, fuel tank breather, Genuine
Not advanced evaporative loss models | 1 |
| 9 | 10009 | HOSE CLIP, 1/2 inch dia., stainless steel
Not advanced evaporative loss models | A/R |
| 10 | 10008 | HOSE CLIP, 3 inch dia., stainless steel
Not advanced evaporative loss models | A/R |

Fuel Filter and Lines



- | | | | |
|----|----------|--|---|
| 11 | ESR4065 | FILTER, fuel | 1 |
| | ESR4065G | FILTER, fuel, Genuine | 1 |
| 12 | ESR259G | O RING, filter union, Genuine | 2 |
| 13 | NRC9771 | OLIVE, feed pipe to tank and engine,
Not advanced evaporative loss models | 2 |
| 14 | NRC9770 | NUT, feed pipe to tank and engine,
Not advanced evaporative loss models | 2 |
| 15 | ESR259G | O RING, feed pipe to engine, Genuine
Advanced evaporative loss models | 1 |
| 16 | ERR6187G | O RING, return pipe to engine, Genuine
Advanced evaporative loss models | 1 |



11
FUEL FILTER
#ESR4065
#ESR4065G

ILL. No.	Part No.	Description	Qty. Rqd.
----------	----------	-------------	-----------

AIR FILTERS

REMARKS LEGEND -

Engine (e) numbers

35D = 3.9 liter, manual transmission,
distributor ignition

36D = 3.9 liter, automatic transmission,
distributor ignition

50D = 4.0 liter, electronic ignition

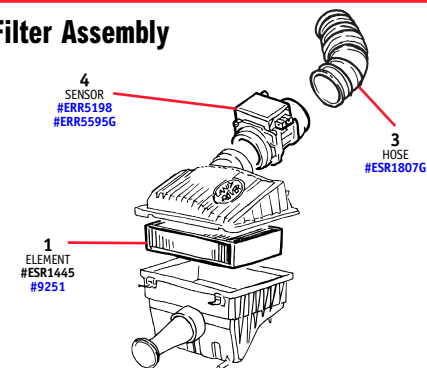
Vehicle i.d. (v) numbers:

RA = 1994 model year;

VA = 1997 model year

MONEY-SAVING KITS NOTED IN RED TYPE

Air Filter Assembly

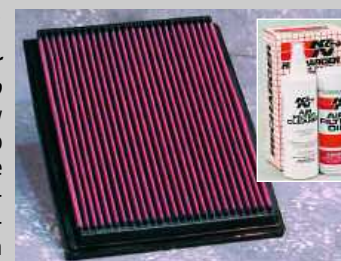


- | | | | |
|---|----------|--|---|
| 1 | ESR1445 | AIR FILTER ELEMENT, standard type | 1 |
| | 9251 | AIR FILTER ELEMENT, K&N premium | 1 |
| 2 | 9244 | SERVICE KIT, K&N air filter
Includes air filter cleaner and oil | 1 |
| 3 | ESR1807G | HOSE, air intake, Genuine | 1 |
| 4 | ERR5198 | SENSOR, mass air flow
(e) 35D, 36D | 1 |
| | ERR5595G | SENSOR, mass air flow, Genuine
(e) 50D engines | 1 |

K & N Air Filter

The last air filter
you'll ever have to
buy!

This high-flow air filter will help your engine breathe better so it can perform better. A special multi-cotton fabric acts as an atomizer to eliminate the harsh effects of rain, dirt, grime, dust and smoke. After 30-40,000 miles you simply take it out, clean it, re-oil it and put it back—no replacement necessary!



Discovery I - K & N Filter (9251)

K & N Service/Cleaner Kit (9244)

TIL No.	Part No.	Description	Qty. Rqd.
---------	----------	-------------	-----------

INJECTION EQUIPMENT

REMARKS LEGEND -

Engine (e) numbers:

35D = 3.9 liter, manual transmission,

distributor ignition

36D = 3.9 liter, automatic transmission,

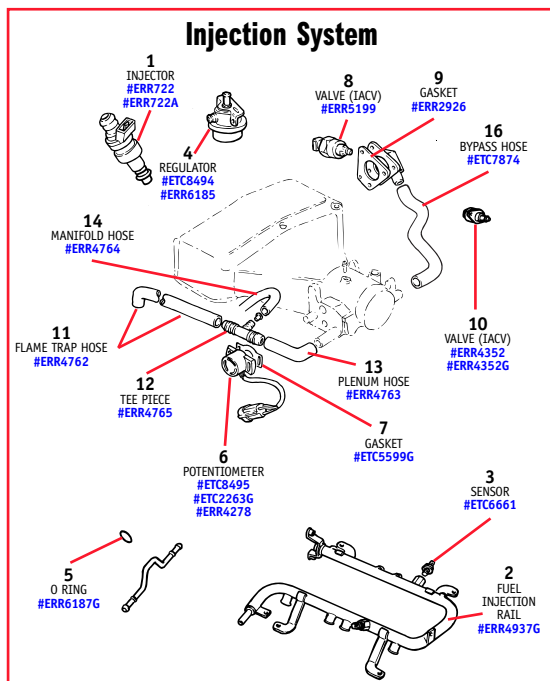
distributor ignition

50D = 4.0 liter, electronic ignition

Vehicle i.d. (v) numbers:

RA = 1994 model year

MONEY-SAVING KITS NOTED IN RED TYPE



- | | | | |
|---|----------|---|---|
| 1 | ERR722 | FUEL INJECTOR | 8 |
| 2 | ERR722A | FUEL INJECTOR KIT, set of 8 | 1 |
| 2 | ERR4937G | FUEL INJECTION RAIL, non-Bosch, Genuine | 1 |
| 3 | ETC6661 | SENSOR, fuel temperature | 1 |
| 4 | ETC8494 | REGULATOR, fuel pressure | 1 |
| | | Not advanced evaporative loss models | |
| | ERR6185 | REGULATOR, fuel pressure, Genuine | 1 |
| | | Advanced evaporative loss models | |
| 5 | ERR6187G | O RING, fuel return pipe connection, Genuine | 2 |
| | | Advanced evaporative loss models | |
| 6 | ETC8495 | POTENTIOMETER, throttle position, round plug type | 1 |
| | | (e) 35D, 36D up to (v) RA112194 | |
| | ERR2263G | POTENTIOMETER, throttle position, flat plug type, Genuine | 1 |
| | | (e) 35D, 36D from (v) RA112195 on | |

TIL No.	Part No.	Description	Qty. Rqd.
---------	----------	-------------	-----------

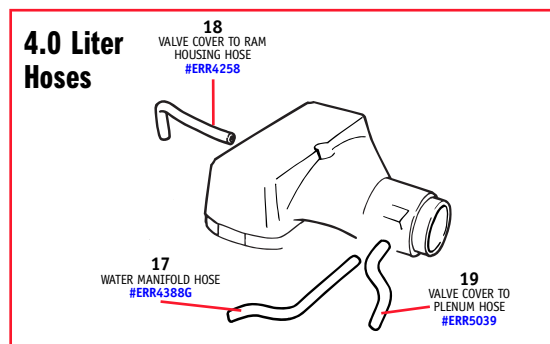
- | | | | |
|----|----------|----------------------------------|---|
| | ERR4278 | POTENTIOMETER, throttle position | 1 |
| | | (e) 50D engines | |
| 7 | ETC5599G | GASKET, potentiometer, Genuine | 1 |
| 8 | ERR5199 | VALVE, idle air control (IACV) | 1 |
| | | (e) 35D, 36D engines | |
| 9 | ERR2926 | GASKET, IACV housing | 1 |
| | | (e) 35D, 36D engines | |
| 10 | ERR4352 | VALVE, idle air control | 1 |
| | | (e) 50D engines | |
| 11 | ERR4762 | HOSE, flame trap to tee piece | 1 |
| | | (e) 35D, 36D engines | |
| 12 | ERR4765 | TEE PIECE RESTRICTOR | 1 |
| | | (e) 35D, 36D engines | |
| 13 | ERR4763 | HOSE, tee piece to plenum | 1 |
| | | (e) 35D, 36D engines | |
| 14 | ERR4764 | HOSE, tee piece to manifold | 1 |
| | | (e) 35D, 36D engines | |



- | | | | |
|----|------|--|---|
| 15 | 9205 | PCV TUNE UP KIT | 1 |
| | | (e) 35D, 36D engines; includes items 11 - 14 | |

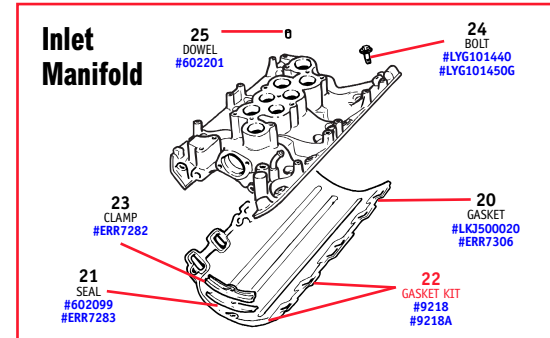
TECH TIP: Discovery I - PCV Tune Up

Pop the hood and look for oil leaks around your valve covers periodically. If you see any seepage (discern any discharge?), you probably have excessive carbon build-up in your pcv system that's causing undue pressure on your seals. It's a simple job to replace them and should be done sooner, rather than later.



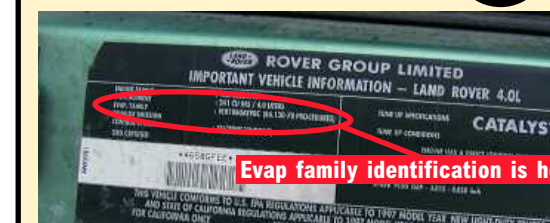
- | | | | |
|----|----------|---|---|
| 16 | ETC7874 | HOSE, IACV bypass | 1 |
| | | (e) 35D, 36D engines | |
| 17 | ERR4388G | HOSE, water manifold to plenum, Genuine | 1 |
| | | (e) 50D engines | |
| 18 | ERR4258 | HOSE, valve cover to ram housing | 1 |
| | | (e) 50D engines | |
| 19 | ERR5039 | HOSE, valve cover to plenum | 1 |
| | | (e) 50D engines | |

TIL No.	Part No.	Description	Qty. Rqd.
---------	----------	-------------	-----------



- | | | | |
|----|------------|---|---|
| 20 | LKJ500020 | GASKET, intake manifold | 1 |
| | | (e) 35D, 36D; (e) 50D through (v) VA558699 | |
| | ERR7306 | GASKET, intake manifold, valley, new style | 1 |
| | | (e) 50D from (v) VA558700 on | |
| 21 | 602099 | SEAL, intake manifold gasket | 2 |
| | | (e) 35D, 36D; through (e) 50D36201A | |
| | ERR7283 | SEAL, intake manifold gasket | 2 |
| | | From (e) 50D36202A on | |
| 22 | 9218 | GASKET KIT, intake manifold | 1 |
| | | (e) 35D, 36D; (e) 50D through (v) VA558699 | |
| | 9218A | GASKET KIT, intake manifold | 1 |
| | | (e) 50D from (v) VA558700 on | |
| 23 | ERR7282 | CLAMP, seal | 2 |
| | | From (e) 50D36202A on | |
| 24 | LYG101440 | BOLT, flanged, intake manifold, short | 1 |
| | | Replaces earlier bolt and washer | |
| | LYG101450G | BOLT, flanged, intake manifold, long, Genuine | 2 |
| | | Replaces earlier bolt and washer | |
| 25 | 602201 | DOWEL PIN, locating ram housing | 2 |
| | | (e) 35D, 36D engines | |
| | | Not flanged type | |

TECH TIP: Discovery I 4.0 Know Your Emissions System



If your Discovery I was built in October 1996 or later, it has a specific 'Evaporative Emissions Family' that will help you determine key fuel system replacement parts like oxygen sensors, fuel pump, fuel filler cap, fuel tank and filler pipe assembly, charcoal canister and more. To identify your 'Evap Family,' check your vehicle information label under the hood on the vertical face of the hood latch panel.

VLR1124AYPFE = Advanced Evaporative Loss System

VLR1060AYPBC = Standard Evaporative Loss System

Know your 'Evap Family' ID when calling to order fuel system parts!



TO ORDER, CALL **1-800-533-2210**

Exhaust

Atlantic British should be your first and only source for exhaust parts for your Discovery. We have everything from clamps to catalytic converters to complete systems. They are easily shipped, easily installed and easily the best performing exhausts you can buy. Our complete packages come with everything you need—pre-fitted and custom-manufactured for your Discovery—so it fits right the first time. And both of the stainless steel exhausts offered here are guaranteed to last the life of your Rover!

Borla Performance Stainless Steel Exhaust

The best exhaust system you can buy for your Rover, for several reasons. Aircraft-quality T-304 stainless steel construction is lighter and stronger than conventional steel and is used inside and out (not just a stainless coating). It's fully welded without crimping for unimpeded flow-through, with slip-fit connectors for an easy, secure fit. Maintenance-free sound absorbing materials maintains low dBs, protects against burnout and reduces shell temperature. And each Borla exhaust is precision-tuned to your vehicle to actually improve engine performance. GUARANTEED for 1 million miles—the best in the business! Legal in all 50 states. It all adds up to make this the last exhaust system you'll ever buy for your Rover!

Borla Stainless Steel Exhaust System - Discovery I (9927)

Falcon Performance Stainless Steel Exhaust

If you want a high-performance, stainless steel exhaust without the "high-performance" sound, the Falcon is your best choice. All Mandrel bends insure free flow of exhaust gases, with no backups or gaseous odors, and the top-quality stainless steel exterior is guaranteed for the life of your vehicle. The Falcon has it all: a quiet, high-performance, custom-fit stainless steel exhaust at a price less than the soft steel OEM system! Easily installed at your local garage.

Falcon Stainless Steel Exhaust - Discovery I (9933)

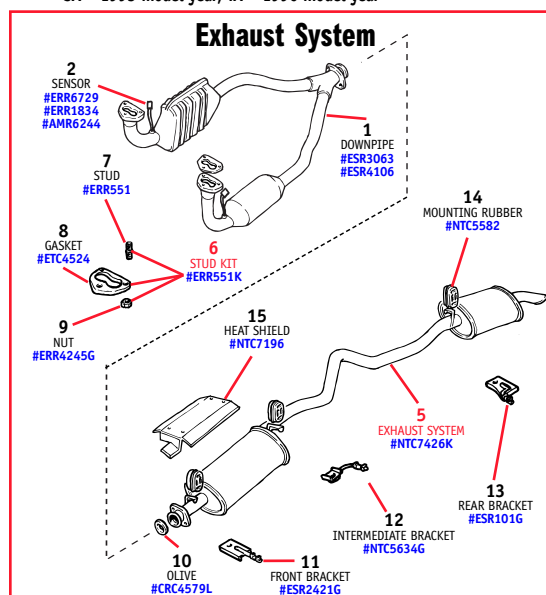
ILL. No.	Part No.	Description	Qty. Rqd.
----------	----------	-------------	-----------

EXHAUST

REMARKS LEGEND -

Vehicle i.d. (v) numbers:

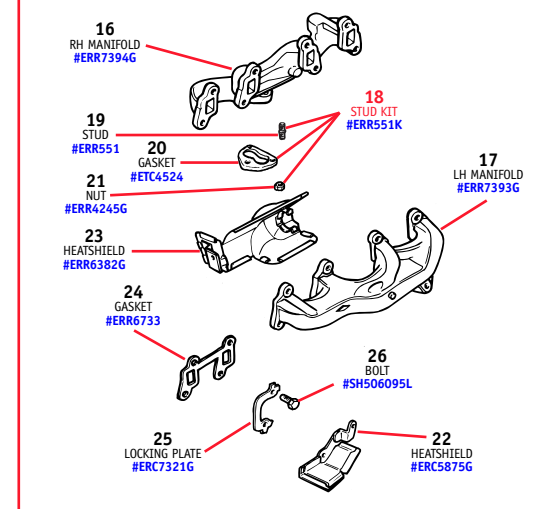
SA = 1995 model year; TA = 1996 model year



1	ESR3063	DOWN PIPE, with catalytic converters ("Y" pipe) Through (v) SA135999; not advanced evap. loss models	1
	ESR4106	DOWN PIPE, with catalytic converters ("Y" pipe) From (v) TA194200 and TA525034 through TA534103 and TA703236; not advanced evap. loss models	1
2	ERR6729	SENSOR, heated oxygen 1995 Model Year; not advanced evap. loss models	2
	ERR1834	SENSOR, heated oxygen From 1996 Model Year on; not advanced evap. loss models	4
	AMR6244	SENSOR, heated oxygen Advanced evaporative loss models	4
3	9933	EXHAUST SYSTEM, complete kit, Falcon stainless Includes centre and rear mufflers, plus clamps	1
4	9927	EXHAUST SYSTEM, 'Borla' High Performance, stainless Single muffler system	1
5	NTC7426K	EXHAUST SYSTEM, complete kit, standard Through (v) TA166329 and TA502742; includes centre and rear muffler, plus clamps	1
6	ERR551K	STUD KIT, exhaust manifold Includes items 8 - 10 for one manifold	2
	EXHBC	EXHAUST BAND CLAMP, for Stainless Steel Exhaust Systems	*NLA
7	ERR551	STUD, manifold to down pipe	6
8	ETC4524	GASKET, manifold to down pipe	2
9	ERR4245G	NUT, manifold to down pipe, Genuine	6
10	CRC4579L	OLIVE, down pipe to exhaust system	1
11	ESR2421G	BRACKET, support, front, Genuine	1
12	NTC5634G	BRACKET, support, intermediate, Genuine	1
13	ESR101G	BRACKET, support, rear, Genuine	1
14	NTC5582	MOUNTING RUBBER	3
15	NTC7196	HEATSHIELD, exhaust	1

ILL. No.	Part No.	Description	Qty. Rqd.
----------	----------	-------------	-----------

Exhaust Manifolds



16	ERR7394G	EXHAUST MANIFOLD, RH	1
17	ERR7393G	EXHAUST MANIFOLD, LH, Genuine	1
	EMFKD1A	FIXING KIT, manifold 1994 through 1995 model year, (e) 35D, 36D	*NLA
	EMFKD1B	FIXING KIT, manifold 1996 through 1997 model year, (e) 50D	*NLA
	EMFKD2A	FIXING KIT, manifold 1998 through 1999 model year, (e) 50D	*NLA
18	ERR551K	STUD KIT, exhaust manifold Includes items 19-21 for one manifold	1
19	ERR551	STUD, manifold to down pipe	6
20	ETC4524	GASKET, manifold to down pipe	2
21	ERR4245G	NUT, manifold to down pipe, Genuine	6
22	ERC5875G	HEATSHIELD, starter motor, Genuine (e) 35D, 36D engines	1
23	ERR6382G	HEATSHIELD, starter motor, Genuine (e) 50D engines	1
24	ERR6733	GASKET, exhaust manifold	4
25	ERC7321	LOCKING PLATE, exhaust manifold	8
26	SH506095L	BOLT, exhaust manifold Not flanged type	16

*NLA = No Longer Available

TECH TIP: Oxygen Sensors & Emissions System

Need a new oxygen sensor? You need to know your vehicle's emissions system 'Evap Family' identification to determine the right sensor to order. See the 'Emissions Systems' tech tip on page 33 for more details and give us a call.

TIL. No.	Part No.	Description	Qty. Rqd.
----------	----------	-------------	-----------

AUTOMATIC TRANSMISSION

REMARKS LEGEND -

Engine (e) numbers:

35D = 3.9 liter, manual transmission,

distributor ignition

36D = 3.9 liter, automatic transmission,

distributor ignition

50D = 4.0 liter, electronic ignition

Vehicle i.d. (v) numbers:

TA = 1996 model year



1
TRANSMISSION ASSY
#FTC3099R
#FTC4969R



2
MASTER KIT
#9246



3
OVERHAUL KIT
#9245



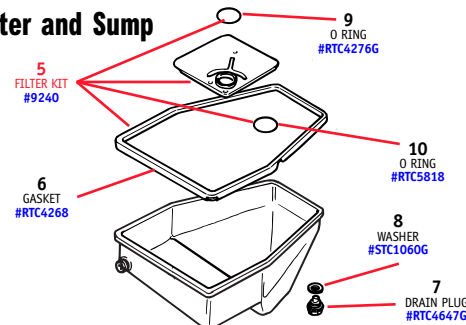
4
GASKET KIT
#9241

1	FTC3099R	TRANSMISSION ASSY, ZF automatic, remanufactured, (e) 35D, 36D engines	1
	FTC4969R	TRANSMISSION ASSY, ZF automatic, remanufactured, (e) 50D engines	1
\$575 refundable core charge included			

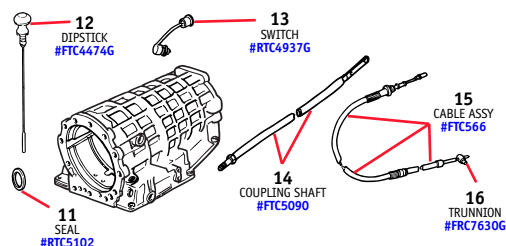
TIL. No.	Part No.	Description	Qty. Rqd.
----------	----------	-------------	-----------

2	9246	MASTER KIT, ZF transmission <i>Includes seals, gaskets and friction linings. Does not include filter</i>	1
3	9245	OVERHAUL KIT, ZF transmission <i>Includes gasket kit and friction linings</i>	1
4	9241	GASKET KIT, ZF transmission	1
5	9240	FILTER KIT, ZF transmission <i>Also includes items 6, 9 and 10</i>	1
6	RTC4268	GASKET, sump	1
7	RTC4647G	PLUG, transmission drain, Genuine	1
8	STC1060G	WASHER, drain plug sealing, Genuine	1
9	RTC4276G	O RING, oil screen, upper, Genuine	1
10	RTC5818	O RING, oil screen, lower	1
11	RTC5102	SEAL, oil pump shaft	1

Filter and Sump



Transmission Controls



17
SELECTOR FILM
#RTC6683

12	FTC4474G	DIPSTICK, Genuine <i>Up to (e) 36D52139C</i>	1
13	RTC4937G	SWITCH, inhibitor and reverse lamps, Genuine	1
14	FTC5090	SHAFT, coupling <i>From (v) TA178214 and TA509009 on</i>	1
15	FTC566	CABLE ASSEMBLY, gearchange	1
16	FRC7630G	TRUNNION, cable, Genuine	1
17	RTC6683	SELECTOR FILM, Genuine	1
	BTR9926LNG	SHIFT ILLUMINATION UNIT, Genuine	1
	BTR9691LNG	SHIFT ILLUMINATION TRIM RING, automatic, Genuine	1

TIL. No.	Part No.	Description	Qty. Rqd.
----------	----------	-------------	-----------

TRANSMISSION - TRANSFER BOX



1
TRANSFER BOX
#STC3608R
#STC3611R

1	STC3608R	TRANSFER BOX ASSEMBLY, remanufactured <i>Manual transmission</i>	1
	STC3611R	TRANSFER BOX ASSEMBLY, remanufactured <i>Automatic transmission</i>	1
2	RTC3890	GASKET AND SEAL KIT, transfer box	1
3	PRC7984G	SWITCH, oil temperature, Genuine	1
4	FRC7043	SEAL, output shaft	2
5	NY120041L	NUT, nyloc, output flange	2
6	ANR2805	MOUNTING RUBBER, transfer box	2



2
GASKET AND SEAL KIT
#RTC3890



3
OIL SWITCH
#PRC7984G



4
OUTPUT
SHAFT SEAL
#FRC7043



5
OUTPUT
FLANGE NUT
#NY120041L



6
MOUNTING
RUBBER
#ANR2805

PRICES SUBJECT TO CHANGE.
Call for the Latest Pricing and Availability.

ILL. No.	Part No.	Description	Qty. Rqd.
----------	----------	-------------	-----------

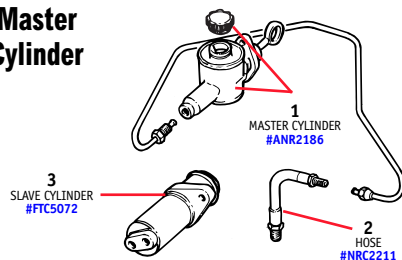
MANUAL TRANSMISSION

REMARKS LEGEND -

Vehicle i.d. (v) numbers:
RA = 1994 model year

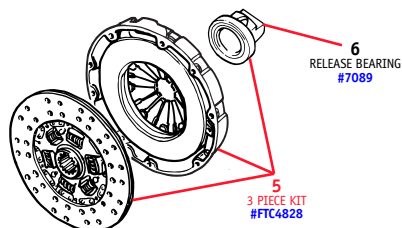
MONEY-SAVING KITS NOTED IN RED TYPE

Master Cylinder



- | | | | |
|---|----------------|---|---|
| 1 | ANR2186 | MASTER CYLINDER, clutch | 1 |
| 2 | NRC2211 | HOSE, master cylinder to slave cylinder | 1 |
| 3 | FTC5072 | SLAVE CYLINDER, clutch | 1 |
| <i>The shim plate, if previously fitted, is not required with this new cylinder</i> | | | |
| 4 | STC2818 | REPAIR KIT, slave cylinder | 1 |

5 Clutch Kit #FTC4828



- | | | | |
|---|-----------------|--|---|
| 5 | FTC4828 | CLUTCH KIT, 3 piece
<i>Includes cover, plate and bearing</i> | 1 |
| 6 | 7089 | RELEASE BEARING, clutch | 1 |
| 7 | STC1543R | TRANSMISSION ASSY, 5-speed manual, remanufactured | 1 |
| 8 | AMR3918 | SWITCH, reverse lamps, R380 5-Speed
<i>From (v) RA109621 on</i> | 1 |



- 7
TRANSMISSION ASSY
#STC1543R

ILL. No.	Part No.	Description	Qty. Rqd.
----------	----------	-------------	-----------



- 8
REVERSE
SWITCH,
R380
5-SPEED
#AMR3918

TECH TIP: Transmission - Maintenance

Each time you do maintenance on your Discovery, be sure to do a quick check of the transmission cooling lines for leakage. These lines are made of steel and corrosion can be a problem. Often it will be seen as seepage on the line or red drops of Dexron on your garage floor that isn't coming from your power steering pump or steering box.

TECH TIP: Excessive Driveshaft Vibration

If you're experiencing excessive vibration when accelerating or under load, the problem is often linked to the rubber coupling or 'donut' at the end of your driveshaft. Atlantic British has a replacement driveshaft and rear universal coupling that eliminates the noisy rubber coupling and the annoying vibration that comes with it. If that vibration goes away the instant you lay off the gas, this is your problem, and our Driveshaft Replacement Kit (Part #9300) is your solution.

ILL. No.	Part No.	Description	Qty. Rqd.
----------	----------	-------------	-----------

PROPELLER SHAFTS

REMARKS LEGEND -

Vehicle i.d. (v) numbers:
VA = 1997 model year



- 1
GAITER
#276483



- 2
UNIVERSAL JOINT
#TVC100010



- 3
COUPLING
#TVF100010G

- | | | | |
|---|-------------------|---|-----|
| 1 | 276483 | GAITER, front propeller shaft | 1 |
| 2 | TVC100010 | UNIVERSAL JOINT, front and rear propeller shafts | A/R |
| 3 | TVF100010G | RUBBER COUPLING, rear propeller shaft, Genuine
<i>Through (v) VA541627 and VA710668</i> | 1 |
| 4 | 9300 | CONVERSION KIT, rear propeller shaft
<i>Eliminates rubber coupling by using standard universal joint</i> | 1 |
| 5 | FRC8387 | PROPELLER SHAFT ASSEMBLY, rear
<i>From (v) VA541628 and VA710669 on</i> | 1 |



- 4
CONVERSION KIT
#9300



- 5
PROP SHAFT
ASSEMBLY
#FRC8387

TIL. No.	Part No.	Description	Qty. Rqd.
----------	----------	-------------	-----------

STEERING

REMARKS LEGEND -

Engine (e) numbers:

35D = 3.9 liter, manual transmission,

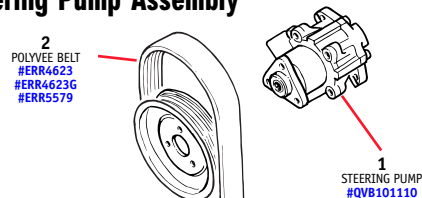
distributor ignition

36D = 3.9 liter, automatic transmission,

distributor ignition

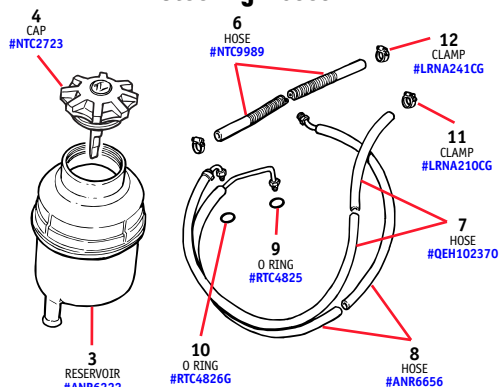
50D = 4.0 liter, electronic ignition

Steering Pump Assembly



- | | | | |
|---|-----------|---|---|
| 1 | QVB101110 | STEERING PUMP ASSEMBLY | 1 |
| 2 | ERR4623 | BELT, drive, polyvee
(e) 35D, 36D engines | 1 |
| | ERR4623G | BELT, drive, polyvee, Genuine
(e) 35D, 36D engines | 1 |
| | ERR5579 | BELT, drive, polyvee
(e) 50D engines | 1 |

Steering Hoses



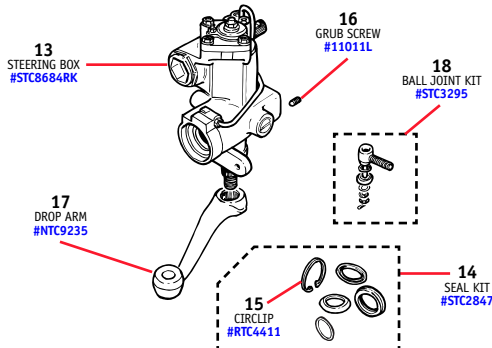
5
HOSE KIT
#9397D



TIL. No.	Part No.	Description	Qty. Rqd.
----------	----------	-------------	-----------

- | | | | |
|----|-----------|--|---|
| 3 | ANR6222 | RESERVOIR, steering fluid
<i>Includes cap</i> | 1 |
| 4 | NTC2723 | CAP, steering fluid reservoir | 1 |
| 5 | 9397D | HOSE KIT, power steering | 1 |
| 6 | NTC9989 | HOSE, reservoir to pump, low pressure | 1 |
| 7 | QEH102370 | HOSE, box to reservoir | 1 |
| 8 | ANR6656 | HOSE, pump to box, high pressure | 1 |
| 9 | RTC4825 | O RING, box to reservoir hose | 1 |
| 10 | RTC4826G | O RING, pump to box hose, Genuine | 1 |
| 11 | LRNA210CG | CLAMP, box to reservoir hose, 21mm dia.,
Genuine | 2 |
| 12 | LRNA241CG | CLAMP, reservoir to pump hose, 24.1mm dia.,
Genuine | 2 |

Steering Box



- | | | | |
|----|-----------|---|---|
| 13 | STC8684RK | STEERING BOX, remanufactured
<i>Includes refundable core charge of \$250</i> | 1 |
| 14 | STC2847 | SEAL KIT, steering box | 1 |
| 15 | RTC4411 | CIRCLIP, seal retaining | 1 |
| 16 | 11011L | GRUB SCREW, locking adjustment screw | 1 |
| 17 | NTC9235 | DROP ARM | 1 |
| 18 | STC3295 | BALL JOINT KIT, drop arm to eye | 1 |
| 19 | 9375D | BALL JOINT KIT, steering | 1 |
| 20 | NRC145 | TUBE, track rod | 1 |
| 21 | NRC4700 | ADJUSTING SHAFT, track rod | 1 |
| 22 | NTC9607 | CROSS ROD ASSEMBLY | 1 |
| 23 | NTC8390G | TUBE, cross rod, Genuine | 1 |
| 24 | NRC1823 | EYE, cross rod | 1 |

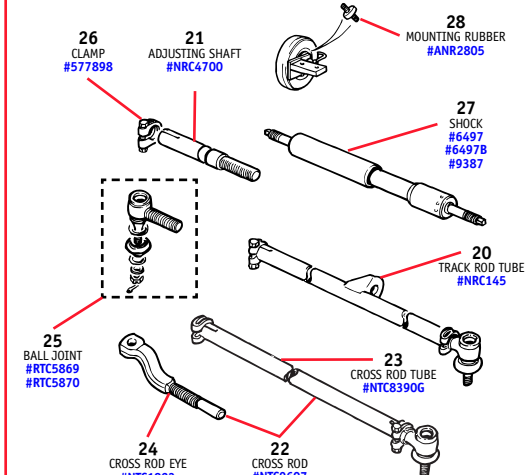
19
BALL JOINT KIT
#9375D



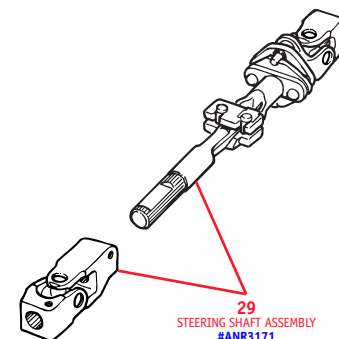
- | | | | |
|----|---------|---|---|
| 25 | RTC5869 | BALL JOINT, track and cross rods, RH thread | 3 |
| | RTC5870 | BALL JOINT, rod end, LH thread | 1 |
| 26 | 577898 | CLAMP, track and cross rods | 5 |
| 27 | 6497 | SHOCK ASSEMBLY, steering, standard | 1 |
| | 6497B | SHOCK ASSEMBLY, steering, Bilstein | 1 |
| | 9387 | SHOCK ASSEMBLY, steering, ARB | 1 |
| 28 | ANR2805 | RUBBER MOUNTING, harmonic shock | 1 |
| 29 | ANR3171 | STEERING SHAFT ASSEMBLY | 1 |

TIL. No.	Part No.	Description	Qty. Rqd.
----------	----------	-------------	-----------

Steering Rods



Steering Shaft Assembly



PRICES SUBJECT TO CHANGE.
Call for the Latest Pricing and Availability.



TO ORDER, CALL **1-800-533-2210**

ILL. No.	Part No.	Description	Qty. Rqd.
----------	----------	-------------	-----------

FRONT SUSPENSION



1
SPRING & SHOCK KITS
#9393
#9393HD
#9374
#9392

1	9393	SPRING AND SHOCK KIT, car set, ARB <i>Medium duty</i>	1
	9393HD	SPRING AND SHOCK KIT, car set, ARB <i>Heavy duty</i>	1
	9374	SPRING KIT, car set, ARB <i>Medium duty</i>	1
	9392	SPRING KIT, car set, ARB <i>Heavy duty</i>	1



2
BILSTEIN SHOCKS
#9279BK
#9279D

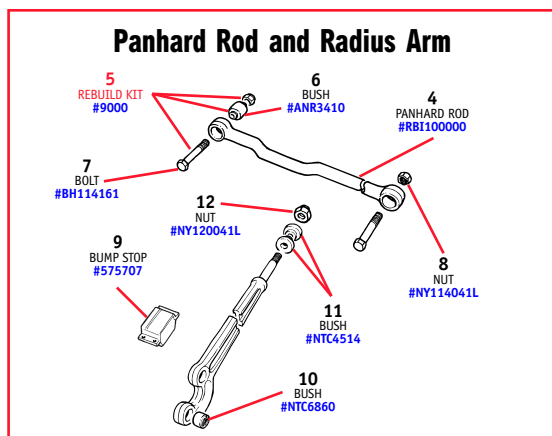
2	9279BK	SHOCK KIT, car set, Bilstein <i>Includes polybushes</i>	1
	9279D	SHOCK KIT, car set, Bilstein	1
	9210	SHOCK ABSORBER KIT, car set, standard	1
3	9721	SUSPENSION BUSH KIT, car set, standard	1

	9780	SUSPENSION BUSH KIT, car set, <i>red polybushes</i>	1
	9783	SUSPENSION BUSH KIT, car set, <i>blue polybushes</i> <i>Softer than red polybushes</i>	1



3
SUSPENSION BUSH KIT
#9721
#9780
#9783

ILL. No.	Part No.	Description	Qty. Rqd.
----------	----------	-------------	-----------



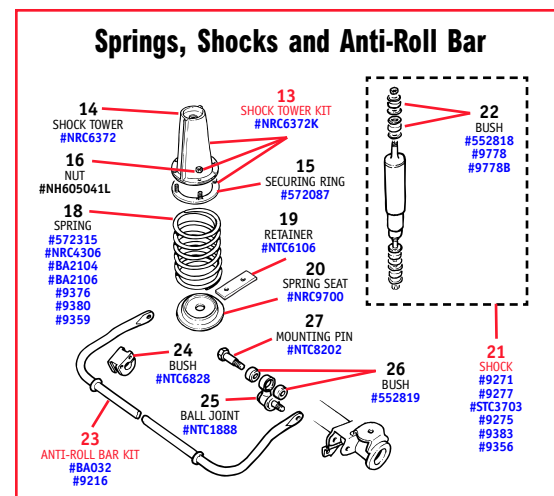
4	RBI100000	PANHARD ROD ASSEMBLY	1
5	9000	REBUILD KIT, panhard rod <i>Includes items 6, 7, 8</i>	1
6	ANR3410	BUSH, panhard rod	2
7	BH114161	BOLT, panhard rod	2
8	NY114041L	NUT, panhard rod	2
9	575707	BUMP STOP, rubber	2
10	NTC6860	BUSH, radius arm	4
11	NTC4514	BUSH, radius arm to chassis	4
12	NY120041L	NUT, radius arm to chassis	2
13	NRC6372K	SHOCK TOWER KIT <i>Includes items 14, 15, 16 for two brackets</i>	1
14	NRC6372	SHOCK TOWER, front shock	2
15	572087	SECURING RING, mounting bracket	2
16	NH605041L	NUT, securing ring	8



17
TWIN SHOCK FITTING KIT
#BA2157

17	BA2157	TWIN SHOCK FITTING KIT, front <i>Includes brackets and fixings required to fit twin front shock absorbers</i>	1
18	572315	COIL SPRING, front RH (blue stripe)	1
	NRC4306	COIL SPRING, front LH (blue & white stripes)	1
	9376	COIL SPRING, front, medium duty, OME, each	1
	9380	COIL SPRING, front, heavy duty, OME, each	1
	9359	COIL SPRING, front, heavy duty, OME, each	1
	BA2104	SPRING, front, heavy-duty, pair	1
	BA2106	SPRING, front, heavy-duty, pair	1
	NTC6106	RETAINER, coil spring	2
19	NTC6106	SEAT, coil spring	2
20	NRC9700	FRONT SHOCK KIT, pair, standard	1
21	9271	FRONT SHOCK KIT, pair, Bilstein	1
	9277	SHOCK ASSEMBLY, front, standard, each	2
	STC3703	SHOCK ASSEMBLY, front, Bilstein, each	2
	9275	SHOCK ASSEMBLY, front, OME, each	2
	9383	SHOCK ASSEMBLY, front, heavy duty, OME, each	2
	9356	BUSH, front shocks	8
22	552818	SHOCK BUSH KIT, front, axle set, <i>red polybushes</i>	1
	9778	SHOCK BUSH KIT, front, axle set, <i>blue polybushes, Softer than red polybushes</i>	1

ILL. No.	Part No.	Description	Qty. Rqd.
----------	----------	-------------	-----------



23
ANTI-ROLL BAR KIT
#BA032

23	BA032	ANTI-ROLL BAR KIT, front	1
	9216	ANTI-ROLL BAR KIT HEAVY DUTY, rear	1
24	NTC6828	BUSH, anti-roll bar mounting, front	2
25	NTC1888	BALL JOINT ASSEMBLY, anti-roll bar	2
26	552819	BUSH, ball joint	4
27	NTC8202	MOUNTING PIN, ball joint <i>(sway bar link bolt)</i>	2
28	9386	SUSPENSION CASTER KIT, ARB <i>Corrects caster on lifted vehicles</i>	1



28
CASTER KIT
#9386

TECH TIP: Shock Absorber Towers - Maintenance



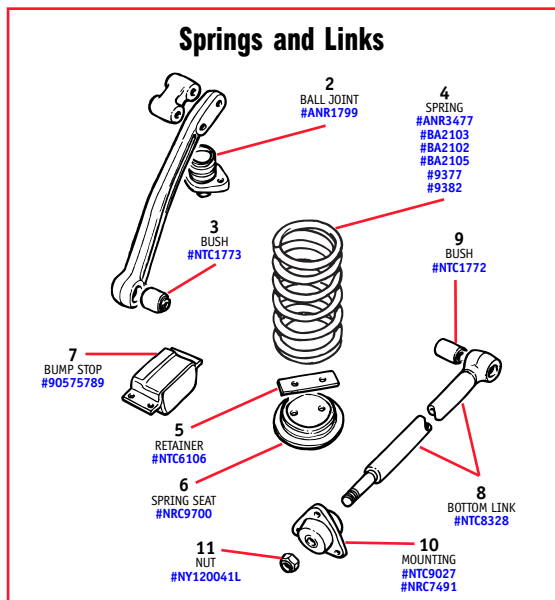
When it's time to change your front shock absorbers, you may find that the front shock towers have rusted, especially if you use your vehicle in salty conditions like we do in the Northeast. We offer the shock towers and their retaining rings as a time and money saving kit (see #13).

TIL. No.	Part No.	Description	Qty. Rqd.
----------	----------	-------------	-----------

REAR SUSPENSION



1
POLYBUSH KIT
#9776



- | | | | |
|----|-----------|--|---|
| 1 | 9776 | POLYBUSH KIT, REAR SUSPENSION TOP LINK | 1 |
| 2 | ANR1799 | BALL JOINT, rear suspension top link | 1 |
| 3 | NTC1773 | BUSH, rear suspension top link | 2 |
| 4 | ANR3477 | COIL SPRING, rear, standard | 2 |
| | BA2103 | COIL SPRINGS, rear, heavy duty, 240lbs, pair | 1 |
| | | Spring height of 413mm | |
| | BA2102 | COIL SPRINGS, rear, extra heavy duty, 295lbs, pair | 1 |
| | | Spring height of 445mm | |
| | BA2105 | COIL SPRING, rear, heavy duty, pair | 1 |
| | 9377 | COIL SPRING, rear, medium duty, OME, each | 2 |
| | 9382 | COIL SPRING, rear, heavy duty, OME, each | 2 |
| 5 | NTC6106 | RETAINER, coil spring | 2 |
| 6 | NRC9700 | SEAT, coil spring | 2 |
| 7 | 90575789 | BUMP STOP, rubber | 2 |
| 8 | NTC8328 | BOTTOM LINK ASSEMBLY | 2 |
| 9 | NTC1772 | BUSH, bottom link | 2 |
| 10 | NTC9027 | MOUNTING, flexible, bottom link to chassis | 2 |
| | NRC7491 | MOUNTING, flexible, bottom link to chassis | 2 |
| | | Alternative to NTC9027 | |
| 11 | NY120041L | NUT, mounting to bottom link | 2 |

PRICES SUBJECT TO CHANGE.
Call for the Latest Pricing and Availability.

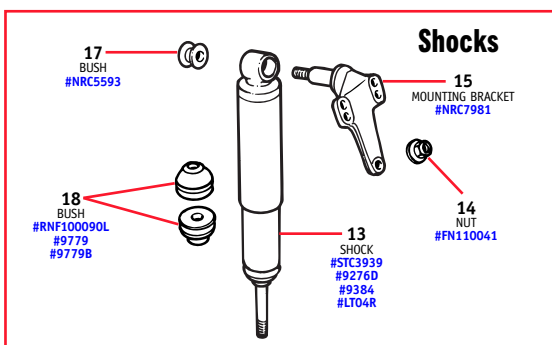
TIL. No.	Part No.	Description	Qty. Rqd.
----------	----------	-------------	-----------



12
SHOCK KIT
#9272
#9278



16
TWIN SHOCK
FITTING KIT
#BA2159



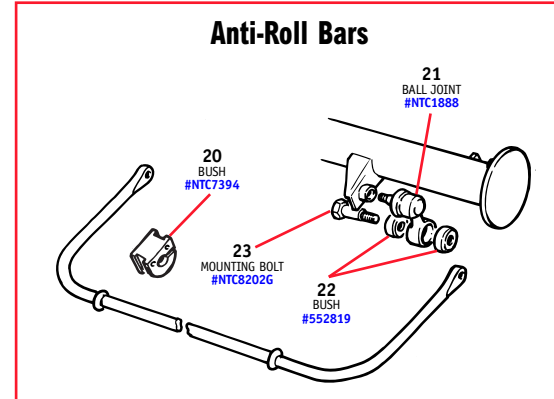
- | | | | |
|----|------------|---|---|
| 12 | 9272 | REAR SHOCK KIT, pair, standard | 1 |
| | 9278 | REAR SHOCK KIT, pair, Bilstein | 1 |
| 13 | STC3939 | SHOCK ASSEMBLY, rear, standard | 2 |
| | 9276D | SHOCK ASSEMBLY, rear, Bilstein | 2 |
| | 9384 | SHOCK ASSEMBLY, rear, OME | 2 |
| | LTR04R | Gas filled SHOCK ASSEMBLY, rear, ARB | 2 |
| | | Long Travel Remote type | |
| 14 | FN110041 | NUT, flanged, rear shock mounting bracket | 6 |
| 15 | NRC7981 | MOUNTING BRACKET, rear shock | 2 |
| 16 | BA2159 | TWIN SHOCK FITTING KIT, rear | 1 |
| | | Includes brackets and fixings required to fit twin rear shock absorbers | |
| 17 | NRC5593 | BUSH, upper, rear shock | 2 |
| 18 | RNF100090L | BUSH, lower, rear shock | 4 |
| | 9779 | SHOCK BUSH KIT, rear, axle set, red polybushes | 1 |
| | 9779B | SHOCK BUSH KIT, rear, axle set, blue polybushes | 1 |
| | | Softer than red polybushes | |



19
ANTI-ROLL
BAR KIT
#9216
#BA034A

- | | | | |
|----|--------|-------------------------------------|---|
| 19 | 9216 | ANTI-ROLL BAR KIT, rear, heavy duty | 1 |
| | | Includes bar and fittings | |
| | BA034A | ANTI-ROLL BAR KIT, rear, standard | 1 |
| | | Includes bar and fittings | |

TIL. No.	Part No.	Description	Qty. Rqd.
----------	----------	-------------	-----------



- | | | | |
|----|----------|---|---|
| 20 | NTC7394 | BUSH, anti-roll bar mounting, rear | 2 |
| 21 | NTC1888 | BALL JOINT ASSEMBLY, anti-roll bar | 2 |
| 22 | 552819 | BUSH, ball joint | 4 |
| 23 | NTC8202G | MOUNTING BOLT, ball joint, Genuine (sway bar link bolt) | 2 |



24
AIR LIFT 1000 KIT
#9263

- | | | | |
|----|------|-------------------------------|---|
| 24 | 9263 | AIR BAG SYSTEM, Air Lift 1000 | 1 |
| | | Increases rear load capacity | |

TECH TIP:

Bilstein Shock Upgrades

The rubber bushings on earlier Bilstein shocks were more than adequate for the rigors of off-roading, but not always tough enough for the air wrench of an over-zealous mechanic. Bilstein has since buffed up their bushings with thicker, stronger rubber so even the burliest mechanic won't harm them. It is important, however, that you match the proper set of Bilsteins to your Discovery. The Disco I has a differently shaped mount, so be sure to specify your Discovery model when ordering.

ILL. No.	Part No.	Description	Qty. Rqd.
----------	----------	-------------	-----------

FRONT AXLE AND DRIVE SHAFTS

REMARKS LEGEND -

Vehicle i.d. (v) numbers:

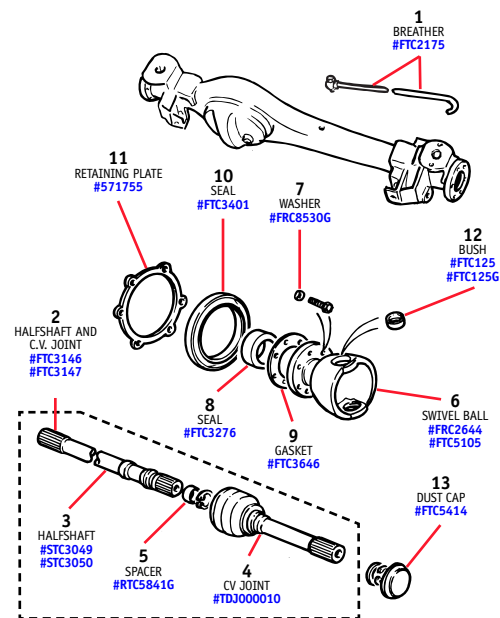
TA = 1996 model year

Axle (a) numbers:

78L = front axle

MONEY-SAVING KITS NOTED IN RED TYPE

Front Half Shaft and C.V. Joint



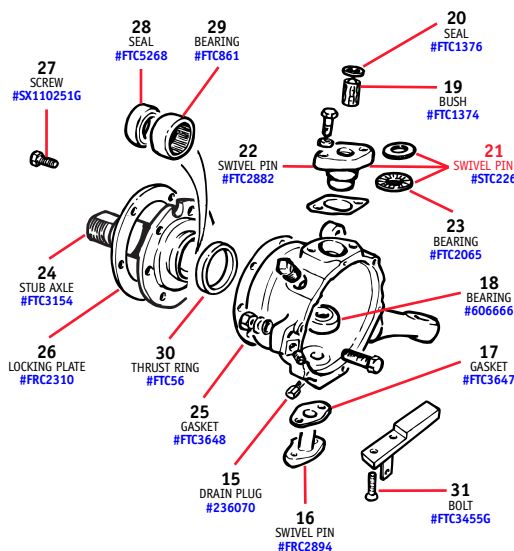
1	FTC2175	BREATHER, axle case	1
2	FTC3146	HALF SHAFT AND C.V. JOINT ASSY, RH	1
3	FTC3147	HALF SHAFT AND C.V. JOINT ASSY, LH	1
3	STC3049	HALF SHAFT, front, RH	1
3	STC3050	HALF SHAFT, front, LH	1
4	TDJ000010	CONSTANT VELOCITY JOINT	2
4	RTC5841G	SPACER, halfshaft, Genuine	2
6	FRC2644	SWIVEL BALL, chrome Through (a) 78L52084A	2
	FTC5105	SWIVEL BALL, black From (a) 78L52085A on	2
7	FRC8530G	WASHER, swivel ball bolt, Genuine	14
8	FTC3276	OIL SEAL, small, swivel ball	2
9	FTC3646	GASKET, swivel ball (joint washer)	2
10	FTC3401	OIL SEAL, large, swivel ball	2
11	571755	RETAINING PLATE, swivel ball seal	2
12	FTC125	BUSH, swivel pin (Railco bush)	2
	FTC125G	BUSH, swivel pin, Genuine (Railco bush)	2
13	FTC5414	DUST CAP	2
		From (a) 78L53960A on	

ILL. No.	Part No.	Description	Qty. Rqd.
----------	----------	-------------	-----------



14
REPLACEMENT KIT,
C.V. Joint
#9365

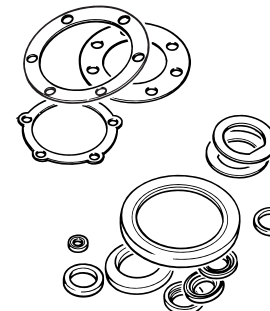
Swivel Housing and Stub Axle



14	9365	REPLACEMENT KIT, C.V. joint Includes one C.V. joint plus all gaskets and seals required	2
15	236070	DRAIN PLUG, swivel pin housing	2
16	FRC2894	SWIVEL PIN, lower	2
17	FTC3647	GASKET, lower swivel pin	2
18	606666	BEARING, lower swivel pin	2
19	FTC1374	BUSH, ABS sensor	2
20	FTC1376	OIL SEAL, ABS sensor	2
	FTC1376G	OIL SEAL, ABS sensor, Genuine	2
21	STC226	SWIVEL PIN KIT, upper Includes bearing and thrust washer	*NLA 2
22	FTC2882	SWIVEL PIN, upper	2
23	FTC2065	BEARING, upper swivel pin	2
24	FTC3154	STUB AXLE	2
25	FTC3648	GASKET, stub axle to swivel pin housing	2
26	FRC2310	PLATE, locking, Genuine	2
27	SX110251G	SCREW, stub axle to swivel pin housing, Genuine	12
28	FTC5268	OIL SEAL, stub axle From Nov. 1996 on, approx.	2
29	FTC861	BEARING, stub axle	2
30	FTC56	THRUST RING	2
31	FTC3455G	BOLT, threadlocked, shock to housing, Genuine	2

ILL. No.	Part No.	Description	Qty. Rqd.
----------	----------	-------------	-----------

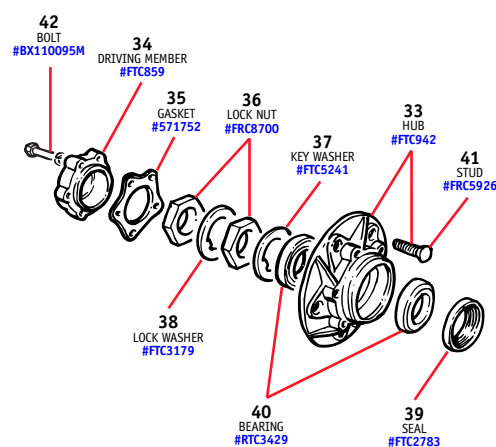
32 Swivel Housing Seal Kit #STC3321



32
SEAL KIT
#STC3321

32	STC3321	SEAL KIT, swivel pin housing Includes gaskets, seals and lockwashers for 1 housing	2
	STC3435	GREASE, swivel pin housing, 370g bottle Alternative	A/R
	STC3435G	GREASE, swivel pin housing, 375ml tube, Genuine Factory recommended	A/R

Front Hub Assembly



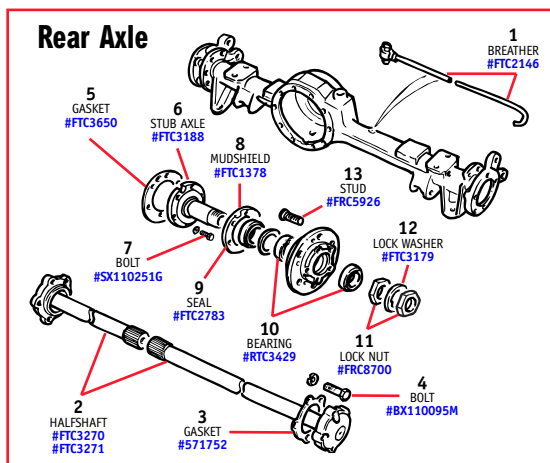
33	FTC942	HUB ASSEMBLY Includes studs; without bearings or seals	2
34	FTC859	DRIVING MEMBER	2
35	571752	GASKET, driving member	2
36	FRC8700	LOCK NUT, hub	4
37	FTC5241	KEY WASHER, hub	2
38	FTC3179	LOCK WASHER, hub	2
39	FTC2783	SEAL, inner Through (v) TA196457 and TA527236	2
40	RTC3429	BEARING, hub, inner and outer	4
41	FRC5926	STUD, hub	10
42	BX110095M	BOLT, threadlocked, axle to hub	10

TIL. No.	Part No.	Description	Qty. Rqd.	Price \$ Per Piece
----------	----------	-------------	-----------	--------------------

REAR AXLE AND DRIVE SHAFTS

REMARKS LEGEND -

Vehicle i.d. (v) numbers:
TA = 1996 model year



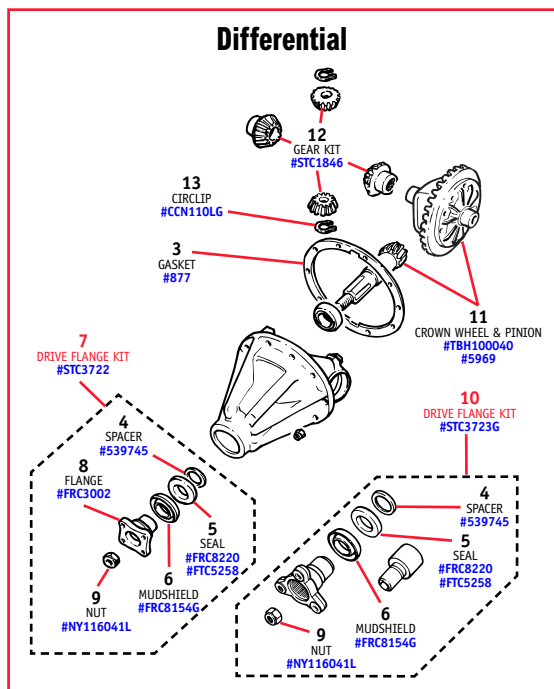
1	FTC2176	BREATHER, axle case	1
2	FTC3270	HALF SHAFT, rear, RH	1
2	FTC3271	HALF SHAFT, rear, LH	1
3	571752	GASKET, halfshaft to hub	2
4	BX110095M	BOLT, threadlocked, halfshaft to hub, Genuine	10
5	FTC3650	GASKET, stub axle	2
6	FTC3188	STUB AXLE, rear	2
7	SX110251G	BOLT, stub axle to axle case, Genuine	12
8	FTC1378	MUD SHIELD, hub	2
9	FTC2783	SEAL, inner	2
		Through (v) TA534103 and TA703236	
10	RTC3429	BEARING, hub, inner and outer	4
11	FRC8700	LOCK NUT, hub	4
12	FTC3179	LOCK WASHER	2
13	FRC5926	STUD, hub	10

TECH TIP: Leaky Swivel Ball Housing

When replacing your constant velocity joints or "CV" joints, we strongly recommend you use our swivel housing grease which is much thicker and specifically formulated NOT to leak around your seals like the standard replacement oil often does. One bottle per side will keep your CV joints bathed in lubrication for the life of the joint.

Swivel Housing Grease - Bottle (STC3435) \$10.95 ea.

TIL. No.	Part No.	Description	Qty. Rqd.	Price \$ Per Piece
----------	----------	-------------	-----------	--------------------



1	FTC5142	DIFFERENTIAL ASSY, four bolt drive flange, new	2
		Front axle; rear axle from (v) VA541628 and VA8710669 on	
	FTC3723	DIFFERENTIAL ASSY, three bolt drive flange, new	1
		(v) Rear axle from VA541628 on	
	FTC5143G	DIFFERENTIAL ASSY, 3-bolt drive flange	1
		Rear axle up to (v) VA541627	
2	9467	LOCKING DIFFERENTIAL KIT, ARB Air Locker	2
		1 kit required per axle	
3	877	GASKET, differential to axle case	2
4	539745	SPACER, pinion	2
5	FRC8220	SEAL, pinion	2
		Front axle up to (a) 78L50959A; rear axle up to (a) 47598280A	
	FTC5258	SEAL, pinion	2
		Front axle from (a) 78L50960A on; rear axle from (a) 47598281A on	
6	FRC8154G	MUDSHIELD, pinion, Genuine	2
		Front axle up to (a) 78L50959A; rear axle up to (a) 47598280A	
7	STC3722	DRIVE FLANGE KIT, four bolt fixing	2
		Front axle; rear axle from (v) VA541628 and VA8710669 on	
8	FRC3002	FLANGE, drive, four bolt fixing	2
		Front axle; rear axle from (v) VA541628 and VA8710669 on	
9	NY116041L	NUT, flange to pinion shaft	2
10	STC3723G	DRIVE FLANGE KIT, three bolt fixing, Genuine	1
		Rear axle up to (v) VA541627 and VA8710668	
11	TBH100040	CROWN WHEEL AND PINION, 3.54:1 ratio	2
		Uses FS112301PG bolts, FTC5413G washers and NY116041L nuts (10 each) to fit	
	5969	CROWN WHEEL AND PINION, 4.11:1 ratio	2
		Alternative short ratio	
12	STC1846	GEAR KIT, differential	2
13	CCN110LG	CIRCLIP, cross shaft gears, Genuine	4

DIFFERENTIAL

REMARKS LEGEND -

Vehicle i.d. (v) numbers:
VA = 1997 model year
Axle (a) numbers:
78L = front axle
47S = rear axle



If your original differential is worn, fear not. Our new replacement will get your Disco back to peak performance in no time.

TECH TIP: Too Much Wheel Spin Off-Road? Get the ARB Air Locker!



Land Rover's open differential 4WD system works great under most conditions, but serious off-roading and articulation sometimes requires a lockable differential, so power is distributed to all wheels equally, and not shifted to "the wheels that slip" (if that wheel happens to be off the ground at the time!). The ARB Air Locker is an all-inclusive kit that can be efficiently installed by a qualified differential technician. Our guys swear by this system, and so will you the first time you use it!



TO ORDER, CALL **1-800-533-2210**

WHEELS & TIRES

Wheels & Tires

Want an easy way to buy wheels and tires for your Discovery? Simply pick up the phone and order your genuine alloy or rugged steel wheels with your choice of tires that can be mounted and balanced prior to shipping. All you will have to do is put them on your Rover.

a. TIRES - Discovery I Highway Tires

- a. Dunlop Radial Rover A/T - P235/70/16
Set of four (9915A)

Standard OE Replacements Tires

- c. b. Michelin Synchrone - P235/70/16
Set of four (9964)

Winter - Snow Tires

- d. c. Nokian Hakkepelitta 1 - P235/70/R16
Set of four (9626B)

Off-Road/ Mud Terrain Tires

- e. d. Goodyear MT/R - P225/75/R16
Set of four (9628B)
- f. e. Goodyear MT/R - P235/85/R16
Raised Suspension
Set of four (9629B)
- f. NEW! Super Swamper 16" Tire
235/85/16
Set of four (9638A)

ILL. No.	Part No.	Description	Qty. Rqd.
----------	----------	-------------	-----------

Discovery I Genuine Castor Alloy Wheel 5-spoke Upgrade - 16" x 7"

#NTC9976MUEG
One Wheel

#NTC9976MUEA
Set of Four



Discovery I Genuine Tornado Alloy Wheel 5-spoke Upgrade - 16" x 7"

#ANR5307MNHG
One Wheel

#ANR5307MNHGA
Set of Four



Discovery I Genuine XS Sport Alloy Wheel 5-spoke Upgrade - 16" x 7"

#ANR3631MNHG
One Wheel

#ANR3631MNHGA
Set of Four



Discovery I Genuine Alloy Wheel 5-spoke Upgrade - 16" x 7"

#NTC7739MUEG
One Wheel

#NTC7739A
Set of Four



Discovery I Standard Steel Wheel 16" x 7"

This is the steel wheel you want for mounting winter-ready tires and swapping with your alloys, at a great price.

#NTC5193PM
One Wheel

#NTC5193PMA
Set of Four



Discovery I NATO Steel 'Wolfe' Wheel Tubeless - 16" x 6-1/2"

Known as the Wolfe Wheel overseas, this is a military-spec all-steel wheel that's built tough and actually turned out looking pretty cool, too. In black and silver and available only through Atlantic British.

#ANR4583PM
NATO Steel Wheel, Black
Set of 4

#ANR4583PMA
NATO Steel Wheel, Black - Set of 4

#ANR4583SIL
NATO Steel Wheel, Silver
Set of 4



WHEEL ACCESSORIES

Wheel Center Caps

#ANR2391MUEG - Quicksilver
#ANR2391MNHG - Silver Sparkle



Dust Shields

#3045 (pair)



Lug Nuts for Alloy Wheels

#ANR2763MMM - w/ Stainless cap
#ANR2763MMA - Set of 20
#NRC7415 - Standard Cap
#NRC7415A - Set of 20



Lug Nuts for Steel Wheels

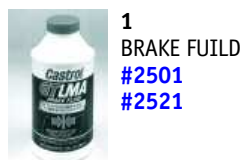
#6738
#6738A - Set of 20
#NTC7396G - Genuine



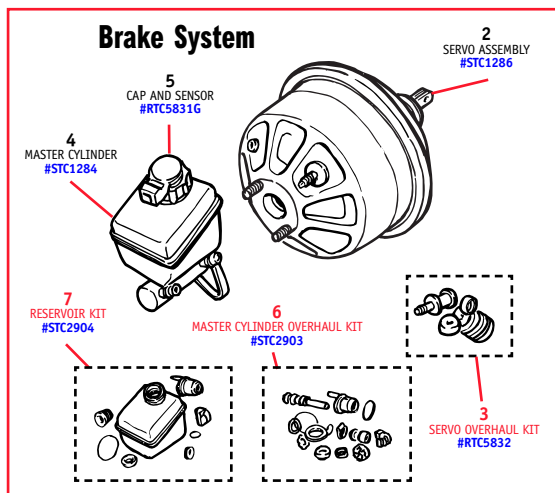
FREE Tire Mounting and Balancing!
When you purchase a set of 4 Wheels with a compatible set of 4 Tires—a \$100 value! Ask for Details!

Ttl. No.	Part No.	Description	Qty. Rqd.
----------	----------	-------------	-----------

BRAKE SYSTEMS



1
BRAKE FLUID
#2501
#2521



- | | | | |
|---|----------|--|-----|
| 1 | 2501 | BRAKE FLUID, Castrol, 12 fl.oz. | A/R |
| | 2521 | BRAKE FLUID, Castrol, 1 Quart | A/R |
| 2 | STC1286 | SERVO ASSEMBLY, Girling | 1 |
| 3 | RTC5832 | SERVO OVERHAUL KIT, Girling | 1 |
| 4 | STC1284 | MASTER CYLINDER ASSEMBLY | 1 |
| 5 | RTC5831G | CAP AND SENSOR, master cylinder, Genuine | 1 |
| 6 | STC2903 | OVERHAUL KIT, master cylinder | 1 |
| 7 | STC2904 | RESERVOIR KIT, master cylinder | 1 |
| 8 | ANR1765 | BRAKE HOSE, front | 2 |
| 9 | NTC3458 | BRAKE HOSE, rear | 2 |



8
FRONT HOSE
#ANR1765



9
REAR HOSE
#NTC3458

Ttl. No.	Part No.	Description	Qty. Rqd.
----------	----------	-------------	-----------

PEDALS & PADS



1
PEDAL PAD
#575818



2
PEDAL PAD
#ANR2941



3
PEDAL PAD
#11H1781L



4
BRAKE LIGHT SWITCH
#LR005794G

- | | | | |
|---|-----------|--------------------------------------|---|
| 1 | 575818 | PAD, rubber, brake and clutch pedals | 2 |
| 2 | ANR2941 | PAD, rubber, brake pedal | 1 |
| 3 | 11H1781L | PEDAL PAD, accelerator pedal | 1 |
| 4 | LR005794G | SWITCH, brake light, Genuine | 1 |

TECH TIP: Auto Transmission Stuck in Park?

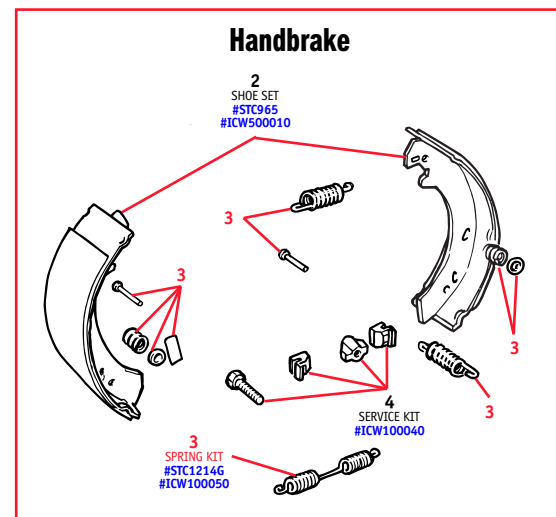
Can't shift out of park? Better check your brake lights. The problem may not be your transmission. It may only be your brake light switch. As a safety device, you must depress the brake before you shift out of park. When the switch fails, the solenoid in your transmission won't let you shift out of park, so you're stuck. If your brake lights don't come on when you depress the pedal, you need a switch. Call us and ask for item AMR2010G. If you must move the vehicle temporarily, a mechanic can jump the brake light switch connection, but the brake lights will not function and the vehicle should not be driven for any length of time.

Ttl. No.	Part No.	Description	Qty. Rqd.
----------	----------	-------------	-----------

HANDBRAKE



1
HANDBRAKE CABLE
#STC1528



- | | | | |
|---|-----------|---|---|
| 1 | STC1528 | CABLE, handbrake | 1 |
| 2 | STC965 | SHOE SET, handbrake | 1 |
| | ICW500010 | Through transfer box no. 28D283204D | |
| | ICW500010 | SHOE SET, handbrake | 1 |
| | ICW500010 | From transfer box no. 28D283205D on | |
| 3 | STC1214G | KIT, return springs plus locating springs and pins, Genuine | 1 |
| | ICW100050 | Through transfer box no. 28D283204D | |
| | ICW100050 | KIT, return springs plus locating springs and pins, | 1 |
| | ICW100050 | From transfer box no. 28D283205D on | |
| 4 | ICW100040 | SERVICE KIT, adjuster | 1 |

PRICES SUBJECT TO CHANGE.
Call for the Latest Pricing and Availability.



TO ORDER, CALL **1-800-533-2210**

FRONT AND REAR BRAKES

MONEY-SAVING KITS NOTED IN RED TYPE

Brakes & Brake Pads

Brake parts are a specialty at Atlantic British. We offer **FOUR** different pad choices—Land Rover Genuine pads, Standard “E”-rated pads (meeting or exceeding OEM specs), Ferodo asbestos-free, anti-squeal pads and dustless, High-Performance Kevlar pads. Plus, of course, rotors and convenient, cost-effective Brake Kits—all the seals, washers, pins and clips you need, all in convenient kit form and all specified to your vehicle. No re-ordering forgotten parts. And no “brake mistakes” by ordering the wrong parts! See our full line of brake pads, rotors and complete kits to the right!

TECH TIP: Brake Fluid



1
BRAKE FLUID
#2501

We recommend changing your brake fluid at least once every two years. Water is absorbed by the brake fluid and can find its way into every part of your braking system, from the calipers to the master cylinder, leaving rust, leaks and corrosion in its wake. That's why we also recommend changing your brake fluid with Castrol's Low Moisture Absorption formula. Castrol LMA is specifically designed for the high rubber content of Rover seals and won't dissolve them the way synthetics can, plus it won't absorb the water that can lead to corrosion down the road.

Castrol LMA Brake Fluid - 12 oz. (2501)

Castrol LMA Brake Fluid - Quart (2521)

ILL. No.	Part No.	Description	Qty. Rqd.
----------	----------	-------------	-----------

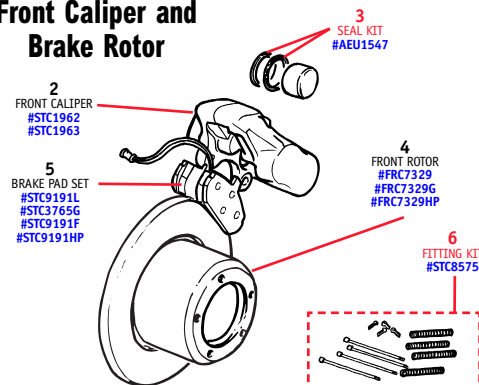


1 BRAKE REBUILD KIT

#9985
#9985F
#9985G
#9985HP
#9983
#9983F
#9984
#9984F

See Description Below

Front Caliper and Brake Rotor

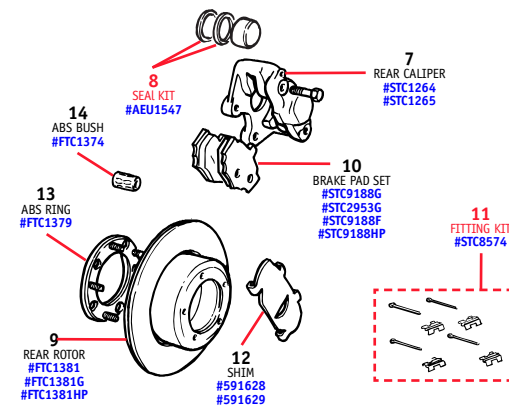


1	9985	BRAKE REBUILD KIT, front/rear brakes, standard <i>Includes 4 rotors, pads, hub seals, lock tabs and gaskets</i>	1
	9985F	BRAKE REBUILD KIT, front/rear brakes, with Ferodo pads <i>Includes 4 rotors, pads, hub seals, lock tabs and gaskets</i>	1
	9985G	BRAKE REBUILD KIT, front/rear brakes, Genuine <i>Includes 4 rotors, pads, hub seals, lock tabs and gaskets</i>	1
	9985HP	BRAKE REBUILD KIT, front/rear brakes, high performance <i>Includes 4 drilled and slotted rotors, Kevlar pads, hub seals, lock tabs and gaskets</i>	1
	9983	BRAKE REBUILD KIT, front brakes only, standard <i>Includes 2 rotors, pads, hub seals, lock tabs and gaskets</i>	1
	9983F	BRAKE REBUILD KIT, front brakes only, with Ferodo pads <i>Includes 2 rotors, pads, hub seals, lock tabs and gaskets</i>	1
	9984	BRAKE REBUILD KIT, rear brakes only, standard <i>Includes 2 rotors, pads, hub seals, lock tabs and gaskets</i>	1
	9984F	BRAKE REBUILD KIT, rear brakes only, with Ferodo pads <i>Includes 2 rotors, pads, hub seals, lock tabs and gaskets</i>	1
2	STC1962 STC1963	CALIPER, front, RH CALIPER, front, LH	1 1
3	AEU1547	SEAL KIT, caliper, per pair of pistons	4

ILL. No.	Part No.	Description	Qty. Rqd.
----------	----------	-------------	-----------

4	FRC7329 FRC7329G FRC7329HP	ROTOR, front, standard ROTOR, front, standard, Genuine ROTOR, front, high performance drilled and slotted	2 2 2
5	STC9191L STC3765G STC9191F STC9191HP	FRONT BRAKE PADS, axle set, standard FRONT BRAKE PADS, axle set, standard, Genuine FRONT BRAKE PADS, axle set, Ferodo FRONT BRAKE PADS, axle set, high performance Kevlar	1 1 1 1
6	STC8575	FITTING KIT, front brake pads, axle set <i>Includes split pins and springs</i>	1

Rear Caliper and Brake Rotor



7	STC1264 STC1265	CALIPER, rear, RH CALIPER, rear, LH	1 1
8	AEU1547	SEAL KIT, caliper, per pair of pistons	2
9	FTC1381 FTC1381G FTC1381HP	ROTOR, rear, standard ROTOR, rear, standard, Genuine ROTOR, rear, high performance drilled and slotted	2 2 2
10	STC8569 STC9188G STC2953G	REAR BRAKE PADS, axle set, standard REAR BRAKE PADS, axle set, standard, Genuine Alternative to STC2953G REAR BRAKE PADS, axle set, standard, Genuine	*NLA 1 1
	STC9188F STC9188HP	REAR BRAKE PADS, axle set, Ferodo REAR BRAKE PADS, axle set, high performance Kevlar	1 1
11	STC8574	FITTING KIT, rear brake pads, axle set	1
12	591628 591629	SHIM, rear brake pad, LH outer or RH inner SHIM, rear brake pad, RH outer or LH inner	2 2
13	FTC1379	RING, ABS sensor	2
14	FTC1374	BUSH, ABS sensor	2

PRICES SUBJECT TO CHANGE.
Call for the Latest Pricing and Availability.

TIL. No.	Part No.	Description	Qty. Rqd.
----------	----------	-------------	-----------

TECH TIP: Ground-Based Electrical Problems



Troubleshooting Vehicle: Discovery 1994-1996

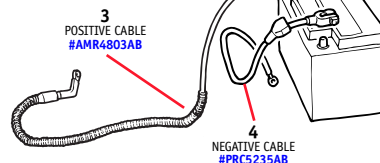
Poor grounds can cause numerous problems on a 1994 - 1996 Discovery. The following are main ground locations and the components they effect. To clean the contact surface, remove the fastener and use a wire brush to clean the post, connector and nut as needed. Spraying on a little contact cleaner may help, too. If the contact point is painted, a star washer can also be added to improve the connection.

Check these ground locations:

1. Right inner fender, behind the battery. Battery and EMC on 1994 & 1995 models.
2. Below the battery, inside the right frame rail. Battery ground.
3. Right of the left cylinder head. ECU, AC compressor clutch on 1994 & 1995 models.
4. Right frame rail, inside wheel well. Starter.
5. Left footwell, behind trim panel. ECM, key switch, radio, OBDII data link.
6. Right footwell, behind trim panel. Starter solenoid relay, park-neutral position switch, alarm, data link connector.
7. Left side of luggage compartment, behind access panel for taillights, above light assembly. Fuel pump, fuel level sensor.

TIL. No.	Part No.	Description	Qty. Rqd.
----------	----------	-------------	-----------

Battery Cables



- | | | | |
|---|-----------|--|------|
| 1 | 9603 | BATTERY, Optima, regular cycle (red top) | 1 |
| 2 | 9602 | BATTERY, Optima, deep cycle (yellow top) | 1 |
| 3 | AMR4803AB | BATTERY CABLE, positive, Genuine | 1 |
| 4 | PRC5235AB | BATTERY CABLE, negative, Genuine | 1 |
| 5 | 9040A | ISOLATOR KIT, dual battery, with battery manager | 1 |
| | 9040 | ISOLATOR KIT, dual battery | 1 |
| | 9041 | MANAGER, battery | 1 |
| | | Use in conjunction with isolator kit | |
| 6 | 9108 | BATTERY MAT | 1 |
| | 9018A | BATTERY MAT, set of 2 | *NLA |

Battery Mat

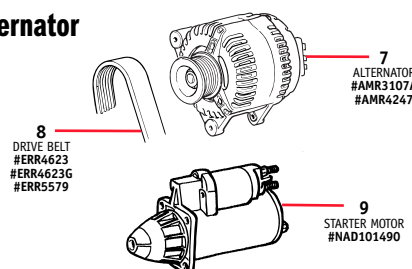
Used and recommended by the U.S. Air Force, the Battery Mat traps and neutralizes battery acid, protecting your battery box and surrounding hoses, wires, metal, etc. from corrosion. Get one for every battery you own and protect your lawn tractor, snowmobile, boat, etc. from corrosion, too!

Battery Mat (9108)



- | | | | |
|---|-----------|--|------|
| 7 | AMR3107A | ALTERNATOR, 100 amp, new (e) 35D, 36D engines | 1 |
| | AMR4247 | ALTERNATOR, 100 amp, new (e) 50D engines | 1 |
| | D1ALTFK | ALTERNATOR FIXING KIT (e) 35D, 36D, 50D engines | *NLA |
| 8 | ERR4623 | BELT, drive, polyvee (e) 35D, 36D engines | 1 |
| | ERR4623G | BELT, drive, polyvee, Genuine (e) 35D, 36D engines | 1 |
| | ERR5579 | BELT, drive, polyvee (e) 50D engines | 1 |
| 9 | NAD101490 | STARTER MOTOR ASSEMBLY | 1 |
| | STARTFK | STARTER FIXING KIT | 1 |

Alternator



*NLA = No Longer Available

BATTERY AND ROTATING ELECTRICS

REMARKS LEGEND -

Engine (e) numbers:

- 35D = 3.9 liter, manual transmission, distributor ignition
- 36D = 3.9 liter, automatic transmission, distributor ignition
- 50D = 4.0 liter, electronic ignition

MONEY-SAVING KITS NOTED IN RED TYPE

TECH TIP: Optima Battery Upgrades



The revolutionary Optima Battery features patented Spiralcell technology that lasts up to 3 times longer than conventional flat-plate batteries! The Optima's totally-sealed design will not leak even if it's cracked open. And, it's much more resistant to jarring and vibration common to off-road driving (a primary killer of conventional liquid-filled batteries). Choose the regular cell with 800 Cold Cranking Amps, or the deep cycle with 750 C.C.A. for winching or other situations that require occasional recharging.

Optima Spiralcell Battery - Red - Regular Cycle (9603)

Optima Spiralcell Battery - Yellow - Deep Cycle (9602)



TO ORDER, CALL **1-800-533-2210**

ILL. No.	Part No.	Description	Qty. Rqd.
----------	----------	-------------	-----------

ENGINE ELECTRICS

REMARKS LEGEND -

Engine (e) numbers:

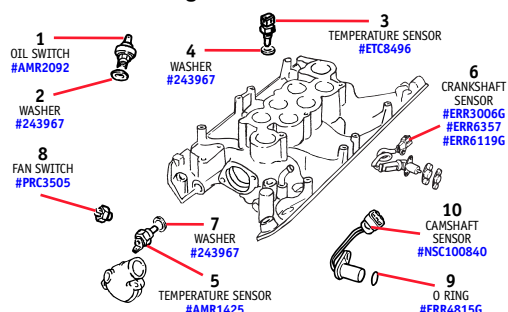
- 35D = 3.9 liter, manual transmission,
distributor ignition
36D = 3.9 liter, automatic transmission,
distributor ignition
50D = 4.0 liter, electronic ignition

Vehicle i.d. (v) numbers:

SA = 1995 model year

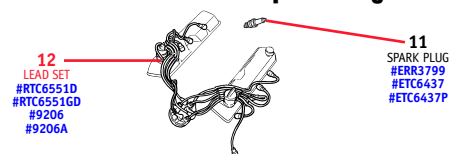
MONEY-SAVING KITS NOTED IN RED TYPE

Engine Sensors



- | | | | |
|----|-----------|--|---|
| 1 | AMR2092 | SWITCH, oil pressure | 1 |
| 2 | 243967 | WASHER, sealing | 1 |
| 3 | ETC8496 | SENSOR, engine coolant temperature, to control unit | 1 |
| 4 | 243967 | WASHER, sealing | 1 |
| 5 | AMR1425 | SENSOR, engine coolant temperature, to gauge | 1 |
| 6 | ERR30066 | SENSOR, crankshaft, manual, w/GEMS, Genuine | 1 |
| | ERR6357 | Through (e) 50D09963A | |
| | ERR6119G | SENSOR, crankshaft, manual, w/GEMS | 1 |
| | | From (e) 50D09964A | |
| | | SENSOR, crankshaft, automatic w/GEMS, Genuine | 1 |
| 7 | 243967 | WASHER, sealing | 1 |
| 8 | PRC3505 | SWITCH, fan, temperature | 1 |
| 9 | ERR4815G | O RING, camshaft sensor, Genuine (e) 50D engines | 1 |
| 10 | NSC100840 | CAMSHAFT SENSOR, Genuine | 1 |
| 11 | ERR3799 | SPARK PLUG, Champion RN 11YC4 | 8 |
| | ETC6437 | SPARK PLUG, Champion RN 12 YC Alternative to ERR3799 | 8 |

H.T. Leads and Spark Plugs



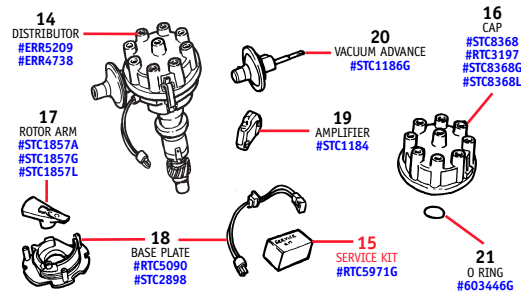
ILL. No.	Part No.	Description	Qty. Rqd.
----------	----------	-------------	-----------



13
COIL LEAD
#STC9124
#STC9124G

- | | | | |
|----|-----------|---------------------------------|---|
| | ETC6437P | SPARK PLUG, Bosch Platinum | 8 |
| | | Alternative to ERR3799 | |
| 12 | RTC6551D | LEAD SET, high tension | 1 |
| | | (e) 35D, 36D engines | |
| | RTC6551GD | LEAD SET, high tension, Genuine | 1 |
| | | (e) 35D, 36D engines | |
| | 9206 | LEAD SET, high tension, Genuine | 1 |
| | | (e) 50D engines | |
| | 9206A | LEAD SET, high tension | 1 |
| | | (e) 50D engines | |
| 13 | STC9124 | COIL LEAD, with cover | 1 |
| | | (e) 35D, 36D engines | |
| | STC9124G | COIL LEAD, with cover, Genuine | 1 |
| | | (e) 35D, 36D engines | |

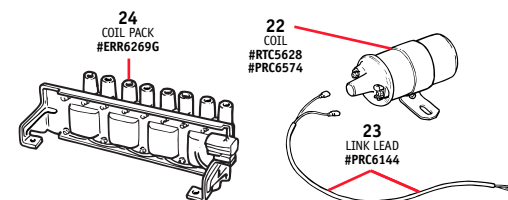
Distributor



- | | | | |
|----|----------|--|---|
| 14 | ERR5209 | DISTRIBUTOR ASSEMBLY | 1 |
| | | From (e) 35D09450B and 36D28464B; as shown | |
| | | no module on distributor. Not (e) 50D | |
| | ERR4738 | DISTRIBUTOR ASSEMBLY, Genuine | 1 |
| | | May be used to replace ERR4755 | |
| | | with module on distributor | |
| 15 | RTC5971G | SERVICE KIT, distributor, Genuine | 1 |
| | | Includes all screws, seals and retainers for distributor | |
| 16 | STC8368 | CAP, distributor | 1 |
| | RTC3197 | CAP, distributor | 1 |
| | | Original fitment type for ERR4755 and ERR5209G | |
| | STC8368G | CAP, distributor, Genuine | 1 |
| | | May be used to replace RTC3197 | |
| | STC8368L | CAP, distributor, Lucas | 1 |
| | | May be used to replace RTC3197 | |
| 17 | STC1857A | ROTOR ARM | 1 |
| | STC1857G | ROTOR ARM, Genuine | 1 |
| | STC1857L | ROTOR ARM, Lucas | 1 |
| 18 | RTC5090 | BASE PLATE AND PICK UP | 1 |
| | | Through (e) 35D09449B and 36D28463B | |
| | STC2898 | BASE PLATE AND PICK UP | 1 |
| | | From (e) 35D09450B and 36D28464B on | |
| 19 | STC1184 | MODULE, amplifier, 3 pin type | 1 |
| | | Fit with link lead STC1212G if replacing 2 pin module | |
| | STC1212G | LINK LEAD, module to harness, 3 pin type, Genuine | 1 |
| | STC1856G | RELOCATION KIT, amplifier module, Genuine | 1 |
| | | From (e) 35D09450B and 36D28464B on | |
| 20 | STC1186G | VACUUM ADVANCE UNIT, 3 pin type, Genuine | 1 |
| 21 | 603446G | O RING, distributor shaft, Genuine | 1 |

ILL. No.	Part No.	Description	Qty. Rqd.
----------	----------	-------------	-----------

Coils



- | | | | |
|----|----------|-----------------------------------|---|
| 22 | RTC5628 | COIL, ignition, Lucas | 1 |
| | | (e) 35D, 36D engines | |
| | PRC6574 | COIL, ignition, Bosch | 1 |
| | | (e) 35D, 36D engines | |
| 23 | PRC6144 | LINK LEAD, ignition coil, Genuine | 1 |
| | | (e) 35D, 36D engines | |
| 24 | ERR6269G | COIL PACK, ignition, Genuine | 1 |
| | | (e) 50D engines | |



25
TUNE UP KIT
#9199G
#9199E



26
EMERGENCY KIT
#9226

- | | | | |
|----|-------|---|---|
| 25 | 9199G | TUNE UP KIT, premium | 1 |
| | | Includes Bosch Platinum plugs and Lucas cap and rotor arm | |
| | 9199E | TUNE UP KIT, standard | 1 |
| 26 | 9226 | EMERGENCY KIT, breakdown | 1 |
| | | Through 1995 model year | |

TIL. No.	Part No.	Description	Qty. Rqd.
----------	----------	-------------	-----------

LIGHTING

REMARKS LEGEND -

Vehicle i.d. (v) numbers:

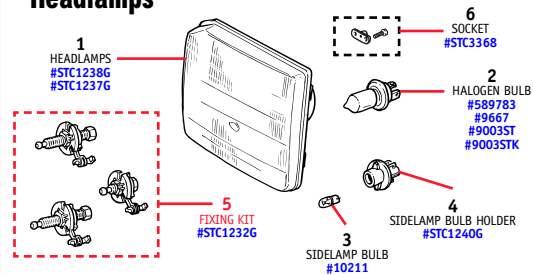
RA = 1994 model year;

SA = 1995 model year;

TA = 1996 model year

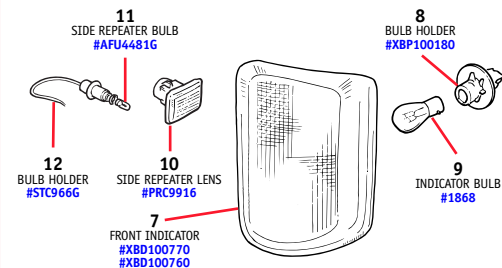
MONEY-SAVING KITS NOTED IN RED TYPE

Headlamps



- | | | | |
|---|----------|--|---|
| 1 | STC1238G | HEADLAMP ASSEMBLY, LH, Genuine | 1 |
| | STC1237G | HEADLAMP ASSEMBLY, RH, Genuine | 1 |
| 2 | 589783 | BULB, halogen, H4, standard 60/55 watt | 2 |
| | 9667 | BULB, halogen, H4, standard 60/55 watt, 'Vision Plus', alternative to 589783 | 2 |
| | 9003ST | BULB, halogen, H4, high performance 60/55 watt 'SilverStar' | 2 |
| | 9003STK | BULB, halogen, H4, high performance, pair 60/55 watt 'SilverStar' | 1 |
| 3 | 10211 | BULB, sidelamp | 2 |
| 4 | STC1240G | BULB HOLDER, sidelamp, Genuine | 2 |
| 5 | STC1232G | FIXING KIT, headlamp, Genuine | 2 |
| 6 | STC3368 | SOCKET, adjuster | 4 |

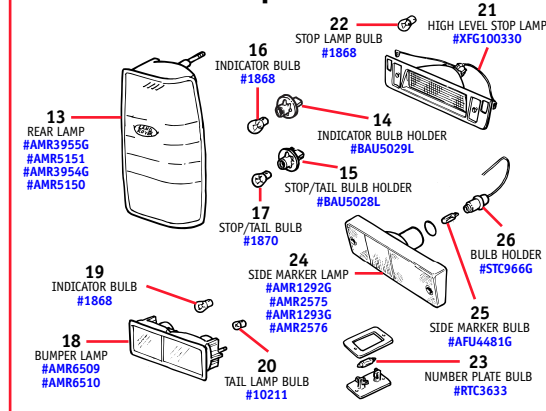
Front Indicators & Side Repeater



- | | | | |
|---|-----------|----------------------------------|---|
| 7 | XBD100770 | TURN INDICATOR LAMP, front LH | 1 |
| | \$37.95 | | |
| | XBD100760 | TURN INDICATOR LAMP, front RH | 1 |
| | \$37.95 | | |
| 8 | XBP100180 | BULB HOLDER, turn indicator lamp | 2 |
| | \$4.95 | | |
| 9 | 1868 | BULB, turn indicator | 2 |
| | \$1.49 | | |

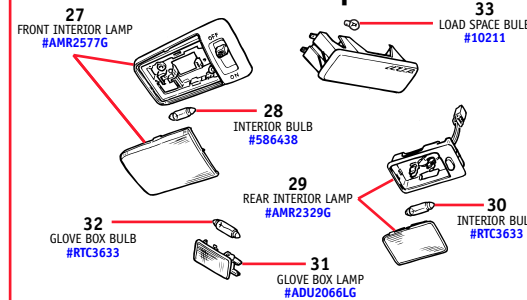
TIL. No.	Part No.	Description	Qty. Rqd.
----------	----------	-------------	-----------

Rear Lamp Assemblies



- | | | | |
|----|-----------|---|---|
| 10 | PRC9916 | LENS ASSEMBLY, side repeater lamp | 2 |
| 11 | AFU4481G | BULB, side repeater lamp, Genuine | 2 |
| 12 | STC966G | BULB HOLDER AND HARNESS, side repeater lamp, Genuine | 2 |
| | \$77.95 | | |
| 13 | AMR3955G | REAR LAMP ASSEMBLY, RH, red, Genuine Through (v) SA162389 and SA501704 | 1 |
| | AMR5151 | REAR LAMP ASSEMBLY, RH, amber, Genuine From (v) SA162390 and SA501705 on | 1 |
| | AMR3954G | REAR LAMP ASSEMBLY, LH, red, Genuine Through (v) SA162389 and SA501704 | 1 |
| | AMR5150 | REAR LAMP ASSEMBLY, LH, amber, Genuine From (v) SA162390 and SA501705 on | 1 |
| 14 | BAU5029L | BULB HOLDER, rear lamp, turn indicator, Genuine | 2 |
| 15 | BAU5028L | BULB HOLDER, rear lamp, stop/tail, Genuine | 2 |
| 16 | 1868 | BULB, turn indicator | 2 |
| 17 | 1870 | BULB, stop/tail | 2 |
| 18 | AMR6509 | REAR BUMPER LAMP ASSY, LH Replace as a pair of lamps if fitting prior to (v) RA110580 | 1 |
| | AMR6510 | REAR BUMPER LAMP ASSY, RH Replace as a pair of lamps if fitting prior to (v) RA110580 | 1 |
| 19 | 1868 | BULB, turn indicator | 2 |
| 20 | 10211 | BULB, tail lamp | 2 |
| 21 | XFG100330 | STOP LAMP ASSEMBLY, high level, Genuine | 1 |

Interior Lamps

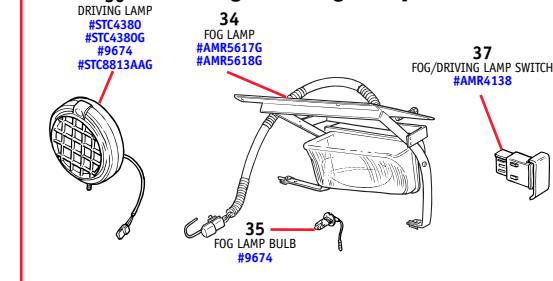


- | | | | |
|----|-----------|---------------------|---|
| 27 | AMR2577G | FRONT INTERIOR LAMP | 1 |
| 28 | 586438 | INTERIOR BULB | 1 |
| 29 | AMR2329G | REAR INTERIOR LAMP | 1 |
| 30 | RTG3633 | INTERIOR BULB | 1 |
| 31 | ADU2066LG | GLOVE BOX LAMP | 1 |
| 32 | RTG3633 | GLOVE BOX BULB | 1 |
| 33 | 10211 | LOAD SPACE BULB | 1 |

TIL. No.	Part No.	Description	Qty. Rqd.
----------	----------	-------------	-----------

- | | | | |
|----|----------|--|---|
| 22 | 1868 | BULB, high level stop lamp | 1 |
| 23 | RTC3633 | BULB, number plate | 2 |
| 24 | AMR1292G | SIDE MARKER LAMP, RH front, amber, Genuine | 1 |
| | AMR2575 | SIDE MARKER LAMP, LH front, amber, Genuine | 1 |
| | AMR1293G | SIDE MARKER LAMP, RH rear, red, Genuine | 1 |
| | AMR2576 | SIDE MARKER LAMP, LH rear, red, Genuine | 1 |
| 25 | AFU4481G | BULB, side marker lamp, Genuine | 4 |
| 26 | STC966G | BULB HOLDER AND HARNESS, side marker lamp, Genuine | 4 |

Driving and Fog Lamps



- | | | | |
|----|-----------|--|---|
| 27 | AMR2577G | INTERIOR LAMP ASSEMBLY, front, Genuine | 1 |
| 28 | 586438 | BULB, front interior lamp | 1 |
| 29 | AMR2329G | INTERIOR LAMP ASSEMBLY, rear, Genuine | 1 |
| 30 | RTC3633 | BULB, rear interior lamp | 1 |
| 31 | ADU2066LG | GLOVE BOX LAMP ASSEMBLY, Genuine | 1 |
| 32 | RTC3633 | BULB, glove box lamp | 1 |
| 33 | 10211 | BULB, rear load space lamp | 1 |
| 34 | AMR5617G | FOG LAMP ASSEMBLY, LH, Genuine | 1 |
| | AMR5618G | FOG LAMP ASSEMBLY, RH, Genuine | 1 |



38
SPOILER AND LAMP KIT
#9700A
#9700B



39
SPARE BULB KIT
#STC8247

- | | | | |
|----|------------|--|-----|
| 35 | 9674 | BULB, halogen, H3, fog lamp | 2 |
| 36 | STC8480 | DRIVING LAMP, Safari 5000 style | 2 |
| | STC8480G | DRIVING LAMP, Safari 5000, Genuine | 2 |
| | 9674 | BULB, halogen, H3, driving lamp | 2 |
| | STC8813AAG | WIRING KIT, Safari 5000 driving lamps, Genuine | 1 |
| 37 | AMR4138 | SWITCH, driving/fog lamps | A/R |

PRICES SUBJECT TO CHANGE.
Call for the Latest Pricing and Availability.



TO ORDER, CALL **1-800-533-2210**

ILL. No.	Part No.	Description	Qty. Rqd.
----------	----------	-------------	-----------

WIPERS AND WASHERS

REMARKS LEGEND -

Vehicle i.d. (v) numbers:

TA = 1996 model year;

VA = 1997 model year;

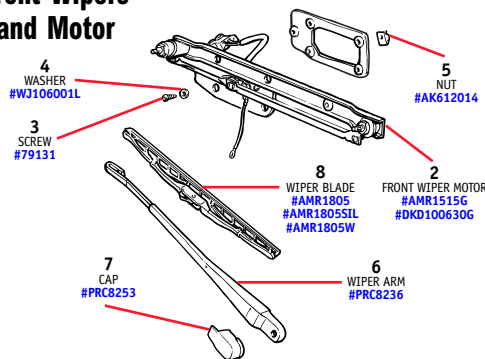
WA = 1998 model year



1 WIPER BLADE KIT #7503 #7503SILK

1	7503	WIPER BLADE KIT, set of 3, standard From (v) 1994-1999	1
	7503SILK	WIPER BLADE KIT, set of 3, silicone From (v) 1994-1999	1

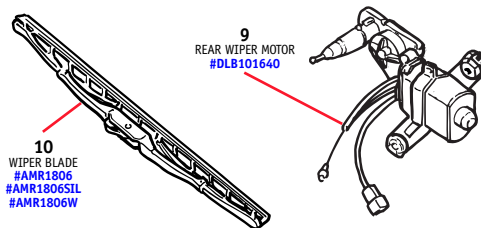
Front Wipers and Motor



2	AMR1515G	WIPER MOTOR ASSEMBLY, windshield, Genuine	1
	DKD100630G	WIPER MOTOR ASSEMBLY, windshield, Genuine Use with YM0104550G link lead to replace AMR1515G	1
	YM0104550G	LINK LEAD, windshield wiper motor, Genuine Use with DKD100630G motor to replace AMR1515G	1
3	79131	SCREW, securing wiper mechanism	6
4	WJ106001L	WASHER, plain	6
5	AK612014	NUT, spring	6
6	PRC8236	WIPER ARM, windshield Through 1997 model year	2
7	PRC8253	CAP, wiper arm	2

ILL. No.	Part No.	Description	Qty. Rqd.
----------	----------	-------------	-----------

Rear Wiper and Motor



8	AMR1805	WIPER BLADE, windshield, standard Through 1999 model year	2
	AMR1805SIL	WIPER BLADE, windshield, silicone Through 1999 model year	2
	AMR1805W	WIPER BLADE, windshield, winter grade Through 1999 model year	2
9	DLB101640	WIPER MOTOR ASSEMBLY, rear screen	1
	WWH	HOSE, Windshield Washer, 5 ft.	*NLA
10	AMR1806	WIPER BLADE, rear screen, standard	1
	AMR1806SIL	WIPER BLADE, rear screen, silicone	1
	AMR1806W	WIPER BLADE, rear screen, winter grade	1

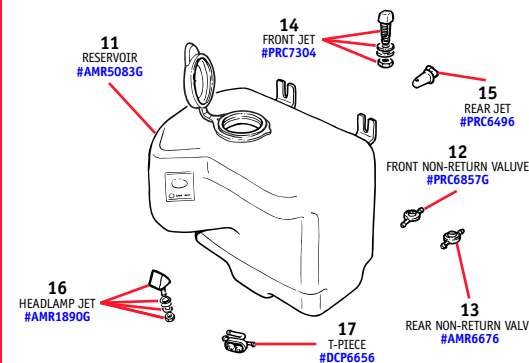
TECH TIP: Winter Wiper Blades



It's not a bad idea to install winter wiper blades before the snow and ice set in. Winter wipers are easily recognized by their protective rubber cover over the wiper to prevent ice build up and keep it flexible (and your windshield clear!). We also recommend you check your wiper bolts when changing your wipers. Just lift the plastic cap on the base of the wiper arm and you'll find a 13mm nut. With the wipers off, adjust the wiper arm to its correct stationary position and tighten, if necessary.

ILL. No.	Part No.	Description	Qty. Rqd.
----------	----------	-------------	-----------

Washer System



11	AMR5083G	RESERVOIR, windshield washer, Genuine From (v) 1996 model year on	1
12	PRC6857G	VALVE, non-return, windshield, Genuine For 5mm dia tubing	1
13	AMR6676	VALVE, non-return, rear screen For 4mm dia tubing	1
14	PRC7304	JET ASSEMBLY, windshield washer	2
15	PRC6496	JET ASSEMBLY, rear screen washer From (v) TA169766 and TA503644 on	1
16	AMR1890	JET ASSEMBLY, headlamp washer	2
17	DCP6656	T-PIECE AND VALVE, headlamp washer	1
18	AMR3271	WASHER PUMP, front washer	*NLA
	DMC10023	WASHER PUMP, rear washer	*NLA
	AMR3661	WASHER PUMP, headlamp washer	*NLA
	AFU4506	GROMMET for pumps AMR3271, DMC10023 and AMR3661	*NLA

TECH TIP: Leaky Headlamp Washers

If you're constantly running out of headlamp washer fluid, the problem is usually a leaky check valve, which allows the fluid to gravity-feed out of the jets beneath your headlamps. The T-piece check valve (see item 17) is a simple replacement and located under the bumper on the passenger side.

*NLA = No Longer Available

TIL. No.	Part No.	Description	Qty. Rqd.
----------	----------	-------------	-----------

INSTRUMENTS AND SWITCHES

REMARKS LEGEND -

Vehicle i.d. (v) numbers:

SA = 1995 model year;

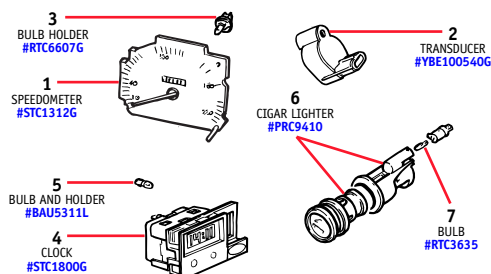
TA = 1996 model year ;

VA = 1997 model year



1
SPEEDOMETER
#STC1312G

Instruments

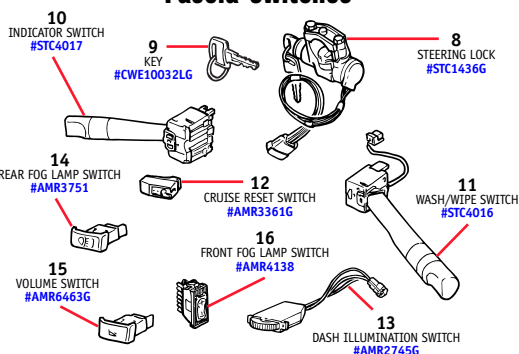


- | | | | |
|---|------------|---|-----|
| 1 | STC1312G | SPEEDOMETER, MPH, Genuine
Through 1995 model year | 1 |
| 2 | YBE100540G | TRANSDUCER, speed, Genuine
Fitted to transfer box | 1 |
| 3 | RTC6607G | BULB HOLDER, instruments, 1.12W,
black body, Genuine | A/R |
| 4 | STC1800G | CLOCK ASSEMBLY, Genuine
Does not include hazard light switch | 1 |
| 5 | BAU5311L | BULB HOLDER AND BULB, clock | 1 |
| 6 | PRC9410 | CIGAR LIGHTER ASSEMBLY | 2 |
| 7 | RTC3635 | BULB, 1.2W, cigar lighter | 2 |

PRICES SUBJECT TO CHANGE.
Call for the Latest Pricing and Availability.

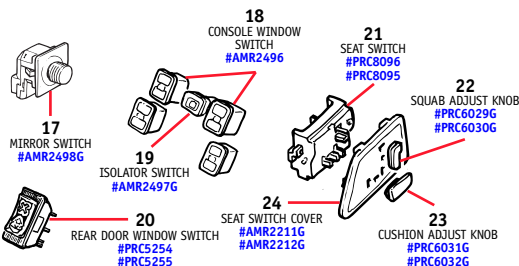
TIL. No.	Part No.	Description	Qty. Rqd.
----------	----------	-------------	-----------

Fascia Switches



- | | | | |
|----|------------|--|-----|
| 8 | STC1436G | LOCK ASSY, steering, with ignition switch
Genuine, Automatic transmission | 1 |
| | STC1435 | IGNITION SWITCH/LOCK, D1 Manual Trans | 1 |
| | STC1746 | IGNITION SWITCH, Electrical Part D1 | 1 |
| 9 | CWE10032LG | KEY, blank, Genuine | A/R |
| | | Original style with rubber head | |
| 10 | STC4017 | SWITCH, turn indicator and headlamps | 1 |
| 11 | STC4016 | SWITCH, wash/wipe, front | 1 |
| 12 | AMR3361G | SWITCH, cruise control, reset/cancel,
Genuine | 1 |
| 13 | AMR2745G | SWITCH, rheostat, dash illumination,
Genuine | 1 |
| 14 | AMR3751 | SWITCH, rear fog lamp | 1 |
| 15 | AMR6463G | SWITCH, volume control, down, Genuine
Through (v) TA534103 and TA703236 | 1 |
| 16 | AMR4138 | SWITCH, front fog lamp, Genuine
From (v) VA543814 and VA712445 on;
can be fitted to earlier models | 1 |

Window and Seat Switches

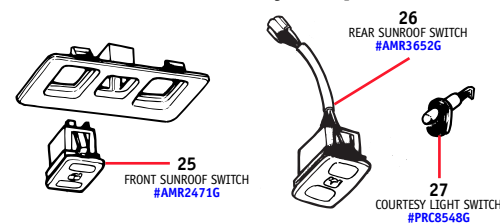


- | | | | |
|----|----------|--|---|
| 17 | AMR2498G | SWITCH, door mirror, Genuine
Up to (v) VA745654 | 1 |
| 18 | AMR2496 | SWITCH, window lift, console | 4 |
| 19 | AMR2497G | SWITCH, isolator, window lift, Genuine | 1 |
| 20 | PRC5254 | SWITCH, window lift, rear door, RH | 1 |
| | PRC5255 | SWITCH, window lift, rear door, LH | 1 |
| 21 | PRC8096 | SWITCH ASSY, seat, non-memory, LH | 1 |
| | PRC8095 | SWITCH ASSY, seat, non-memory, RH | 1 |
| 22 | PRC6029G | KNOB, switch, squab adjust, LH, Genuine | 1 |
| | PRC6030G | KNOB, switch, squab adjust, RH, Genuine | 1 |
| 23 | PRC6031G | KNOB, switch, cushion adjust, LH, Genuine | 1 |
| | PRC6032G | KNOB, switch, cushion adjust, RH, Genuine | 1 |

TIL. No.	Part No.	Description	Qty. Rqd.
----------	----------	-------------	-----------

- | | | | |
|----|----------|---------------------------------|---|
| 24 | AWR2211G | COVER, seat switch, LH, Genuine | 1 |
| | AWR2212G | COVER, seat switch, RH, Genuine | 1 |

Sunroof and Courtesy Lamp Switches



- | | | | |
|----|----------|--------------------------------------|---|
| 25 | AMR2471G | SWITCH, sunroof, front, Genuine | 1 |
| 26 | AMR3652G | SWITCH, sunroof, rear, Genuine | 1 |
| 27 | PRC8548G | SWITCH, door, courtesy lamp, Genuine | 5 |

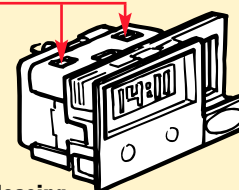
TECH TIP: Discovery Clock Replacement



If your clock unit has failed, it is easily replaced with part #STC1800G (see 4), however, removing the old unit requires some specific steps as follows:

1. **Remove drinks tray**
 - a) Remove ashtray by pushing spring clip down. Remove auxiliary switch panel, it snaps out.
 - b) Remove six screws holding tray. Three in each compartment where switch panel and ashtray were.

Tabs hold the clock in place here (two on top, two below—not shown)



2. **Remove clock by releasing four tabs that hold the clock in place**

a) To release the tabs, insert a thin strip of metal such as a feeler gauge at four places indicated in picture. **You will need to do all four at the same time.**

b) Slide clock out and disconnect electrical plugs.

c) Install new unit by connecting electrical plugs and snap back in place

d) Install drinks tray, ashtray and switch panel.



TO ORDER, CALL **1-800-533-2210**

ILL. No.	Part No.	Description	Qty. Rqd.
----------	----------	-------------	-----------

MISCELLANEOUS ELECTRICS

REMARKS LEGEND -

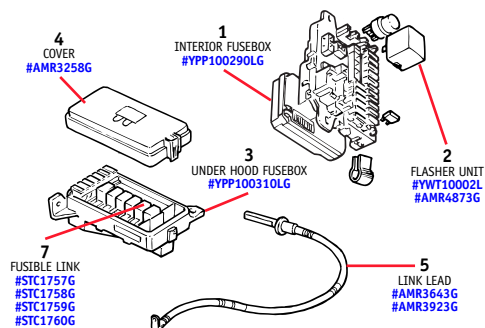
Vehicle i.d. (v) numbers:

SA = 1995 model year;

TA = 1996 model year

MONEY-SAVING KITS NOTED IN RED TYPE

Fuseboxes



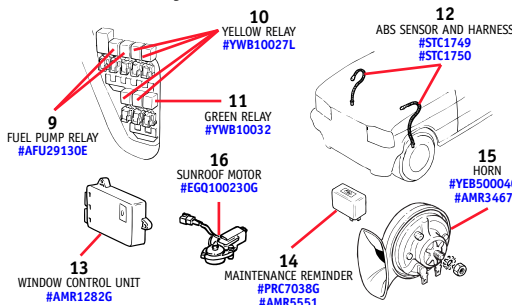
- | | | | |
|----|-------------|--|------|
| 1 | YPP100290LG | FUSEBOX ASSEMBLY, interior, Genuine | 1 |
| 2 | YWT10002L | FLASHER UNIT, heavy duty, for trailer use
Through 1995 model year | 1 |
| | AMR4873G | FLASHER UNIT, heavy duty, for trailer use, Genuine
From 1996 model year on | 1 |
| 3 | YPP100310LG | FUSEBOX ASSEMBLY, under hood, Genuine | 1 |
| 4 | AMR3258G | COVER, under hood fusebox, Genuine | 1 |
| 5 | AMR3643G | LINK LEAD, battery to under hood fusebox, Genuine
Through 1995 model year | 1 |
| | AMR3923G | LINK LEAD, battery to under hood fusebox, Genuine
From 1996 model year on | 1 |
| 6 | 9614 | FUSE PACK, assorted ratings, spade fitment | A/R |
| 7 | STC1757G | FUSIBLE LINK, 100 amp, blue, Genuine | 1 |
| | STC1758G | FUSIBLE LINK, 60 amp, yellow, Genuine | 3 |
| | STC1759G | FUSIBLE LINK, 40 amp, green, Genuine | 1 |
| | STC1760G | FUSIBLE LINK, 30 amp, pink, Genuine | 1 |
| 8 | 9439A | TRAILER WIRING KIT, 'FLAT 4'
Includes 9439 adaptor | 1 |
| | 9439 | WIRING ADAPTOR, for Rover plug
Wire and plug to fit trailer tow socket on car | 1 |
| 9 | AFU29130E | RELAY, fuel injection and fuel pump | 2 |
| 10 | YWB10027L | RELAY, multiple applications, yellow | A/R |
| | YWB10027LG | RELAY, multiple applications, yellow, Genuine | *NLA |
| 11 | YWB10032 | RELAY, multiple applications, green | A/R |

ILL. No.	Part No.	Description	Qty. Rqd.
----------	----------	-------------	-----------



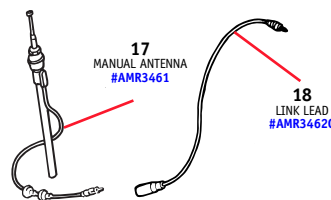
8
TRAILER WIRING KIT
#9439A

Relays, Sensors and Horn



- | | | | |
|----|------------|---|---|
| 12 | STC1749 | SENSOR AND HARNESS ASSY, ABS, front | 2 |
| | STC1750 | SENSOR AND HARNESS ASSY, ABS, rear | 1 |
| 13 | AMR1282G | ELECTRONIC CONTROL UNIT, window lift, Genuine | 1 |
| 14 | PRC7038G | RELAY, emissions maintenance reminder, Genuine
Through (v) TA194199 and TA525033 | 1 |
| | AMR5551 | RELAY, emissions maintenance reminder
From (v) TA194200 and TA525034 on | 1 |
| 15 | YEB500040G | HORN, high note, Genuine | 1 |
| | AMR3467G | HORN, low note, Genuine | 1 |
| 16 | EGQ100230G | MOTOR ASSEMBLY, sunroof, front and rear, Genuine | 2 |

Antenna



- | | | | |
|----|----------|---|------|
| 17 | AMR3461 | ANTENNA, audio system, manual
Through (v) TA534103 and TA703236 | 1 |
| | AMR3461G | ANTENNA, audio system, manual, Genuine
Through (v) TA534103 and TA703236 | *NLA |
| 18 | AMR3462G | LINK LEAD, manual antenna, Genuine
Through (v) TA534103 and TA703236 | 1 |

*NLA = No Longer Available

ILL. No.	Part No.	Description	Qty. Rqd.
----------	----------	-------------	-----------



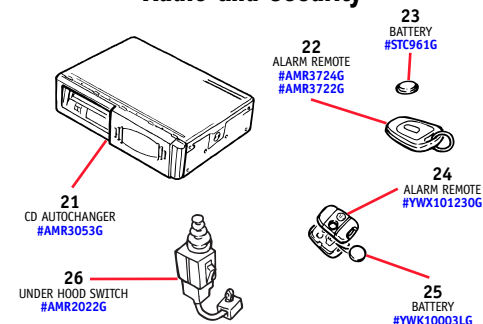
19
ELECTRIC ANTENNA
#9124
#STC8040G



20
LINK LEAD
#LRNA4G

- | | | | |
|----|----------|--|---|
| 19 | 9124 | ANTENNA, audio system, electric | 1 |
| | STC8040G | ANTENNA, audio system, electric, Genuine | 1 |
| 20 | LRNA4G | LINK LEAD, electric antenna, Genuine | 1 |

Audio and Security



- | | | | |
|----|------------|---|---|
| 21 | AMR3053G | AUTOCHANGER ASSEMBLY, compact disc, Genuine | 1 |
| 22 | AMR3722G | REMOTE UNIT, alarm, single button, Genuine
Through 1995 model year | 1 |
| 23 | STC961G | BATTERY, remote unit, Genuine
Through 1995 model year;
always change batteries in pairs | 2 |
| 24 | YWX101230G | REMOTE UNIT, alarm, two button, Genuine
From 1996 model year on | 1 |
| 25 | YWK10003LG | BATTERY, remote unit, Genuine
From 1996 model year on | 1 |
| 26 | AMR2022G | SWITCH, alarm, under hood, Genuine | 1 |

TECH TIP: Replacing The Radio Antenna

Replacing antennas is more difficult than you might imagine. This job requires the removal of the inner fender splash shield. Check our website for complete instructions. Note- A manual antenna cannot be replaced with a power antenna, the radios are matched to the antennas.

TIL. No.	Part No.	Description	Qty. Rqd.
----------	----------	-------------	-----------

HEATING AND AIR CONDITIONING

REMARKS LEGEND -

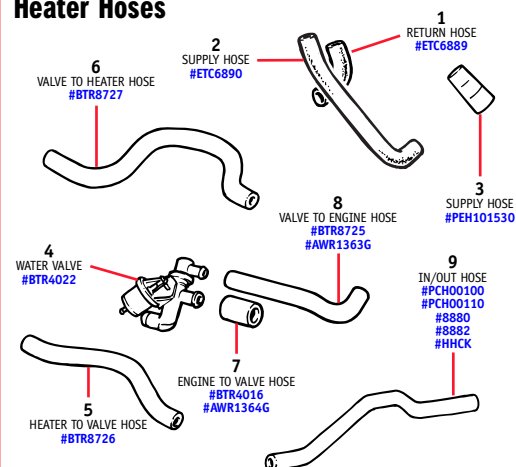
Engine (e) numbers:

35D = 3.9 liter, manual transmission,
distributor ignition
36D = 3.9 liter, automatic transmission,
distributor ignition
50D = 4.0 liter, electronic ignition

Vehicle i.d. (v) numbers:

RA = 1994 model year;
SA = 1995 model year;
TA = 1996 model year

Heater Hoses



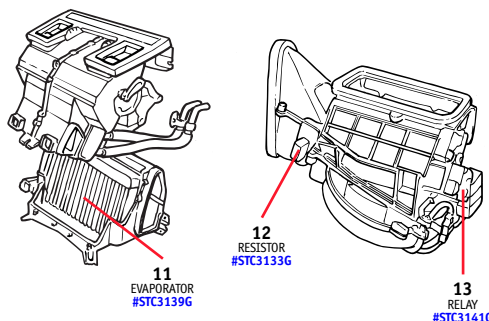
1	ETC6889	HOSE, heater, return to engine Through 1995 model year	1
2	ETC6890	HOSE, heater, supply from engine Through 1995 model year	1
3	PEH101530	HOSE, heater, supply from engine From (v) 1996 model year on	1
4	BTR4022	VALVE, water control Through (v) RA104738	1
5	BTR8726	HOSE, heater to valve Through (v) RA104738	1
6	BTR8727	HOSE, valve to heater Through (v) RA104738	1
7	BTR4016 AWR1364G	HOSE, engine to valve, Genuine From (v) RA103487 to 104738	1
8	BTR8725 AWR1363G	HOSE, valve to engine, Genuine From (v) RA103487 to 104738	1
9	PCH000100	HOSE, heater in/out From (v) RA104739 through 1995 model year	1
	PCH000110	HOSE, heater in/out From (v) 1996 model year on	1
	8880	HEATER HOSE KIT, H20 valve (v) 1994 model year	*NLA
	8882	HEATER HOSE KIT, without H20 valve (v) 1994 through 1999 model year	*NLA
	HHCK	CLAMP KIT, heater hoses Includes 8 clamps	1

TIL. No.	Part No.	Description	Qty. Rqd.
----------	----------	-------------	-----------



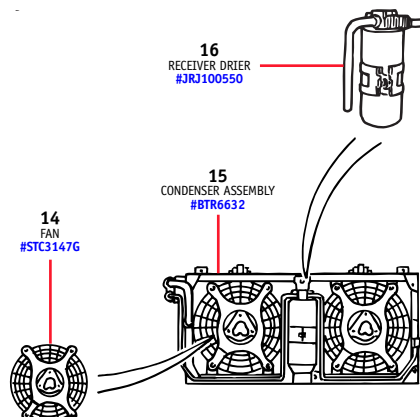
10
HEATER CORE
#STC3135

Core and Evaporator



10	STC3135	CORE, heater unit	1
11	STC3139G	EVAPORATOR ASSEMBLY, Genuine	1
12	STC3133G	RESISTOR, blower speed, Genuine	1
13	STC3141G	RELAY, blower motor, Genuine	1

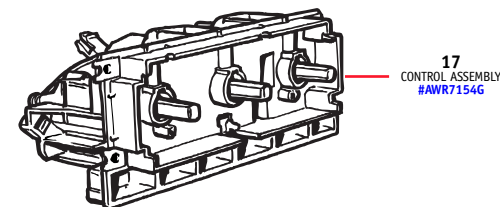
Condenser and Fan



14	STC3147G	FAN, condenser, Genuine	2
15	BTR6632	CONDENSER AND FAN ASSY Includes receiver drier canister	1
16	JRJ100550	RECEIVER DRIER	1
17	AWR7154G	CONTROL ASSEMBLY, heating system, Genuine	1

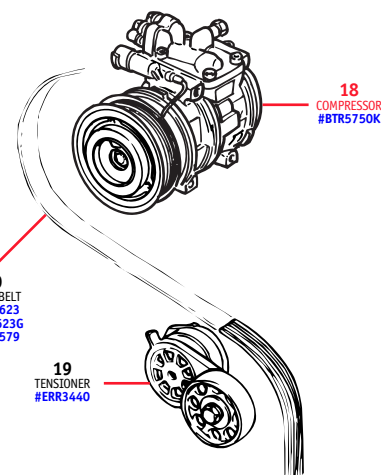
TIL. No.	Part No.	Description	Qty. Rqd.
----------	----------	-------------	-----------

Control Assembly



17
CONTROL ASSEMBLY
#AWR7154G

Compressor Assembly



18	BTR5750K	COMPRESSOR ASSEMBLY, remanufactured Includes core charge of \$150	1
19	ERR3440	TENSIONER, pulley, polyvee belt	1
20	ERR4623	BELT, drive, polyvee (e) 35D, 36D engines	1
	ERR4623G	BELT, drive, polyvee, Genuine (e) 35D, 36D engines	1
	ERR5579	BELT, drive, polyvee (e) 50D engines	1

*NLA = No Longer Available

PRICES SUBJECT TO CHANGE.
Call for the Latest Pricing and Availability.



TO ORDER, CALL **1-800-533-2210**

ILL. No.	Part No.	Description	Qty. Rqd.
----------	----------	-------------	-----------

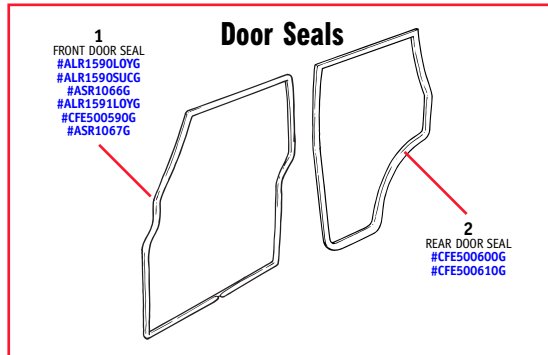
DOOR FITTINGS

REMARKS LEGEND -

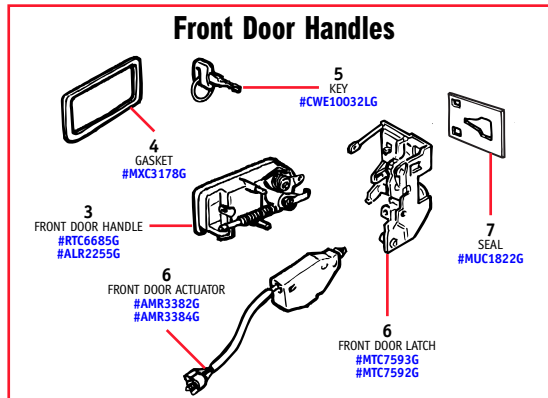
Vehicle i.d. (v) numbers:

SA = 1995 model year;

VA = 1997 model year



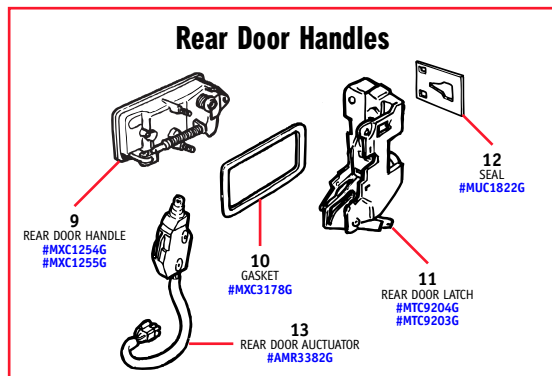
- | | | | |
|---|-------------|--|---|
| 1 | ALR1590LOYG | DOOR SEAL, front RH, Dark Granite, Genuine | 1 |
| | ALR1590SUCG | DOOR SEAL, front RH, Bahama Beige, Genuine | 1 |
| | ASR1066G | DOOR SEAL, front RH, Genuine | 1 |
| | ALR1591LOYG | DOOR SEAL, front LH, Dark Granite, Genuine | 1 |
| | CFE500590G | DOOR SEAL, front LH, Bahama Beige, Genuine | 1 |
| | ASR1067G | DOOR SEAL, front LH, Genuine | 1 |
| 2 | CFE500600G | DOOR SEAL, rear RH, Dark Granite, Genuine | 1 |
| | CFE500600G | DOOR SEAL, rear RH, Bahama Beige, Genuine | 1 |
| | CFE500610G | DOOR SEAL, rear LH, Dark Granite, Genuine | 1 |
| | CFE500610G | DOOR SEAL, rear LH, Bahama Beige, Genuine | 1 |



ILL. No.	Part No.	Description	Qty. Rqd.
----------	----------	-------------	-----------



- | | | | |
|---|------------|--|-----|
| 3 | RTC6685G | DOOR HANDLE, exterior, front RH, Genuine | 1 |
| | ALR2255G | DOOR HANDLE, exterior, front LH, Genuine | 1 |
| 4 | MXC3178G | GASKET, exterior door handle, front, Genuine | 2 |
| 5 | CWE10032LG | KEY, blank, Genuine | A/R |
| | | Original style with rubber head | |
| 6 | MTC7593G | DOOR LATCH ASSEMBLY, front RH, Genuine | 1 |
| | MTC7592G | DOOR LATCH ASSEMBLY, front LH, Genuine | 1 |
| 7 | MUC1822G | DUST SEAL, front door latch, Genuine | 2 |
| 8 | AMR3382G | ACTUATOR, front door RH, Genuine | 1 |
| | AMR3384G | ACTUATOR, front door LH, Genuine | 1 |

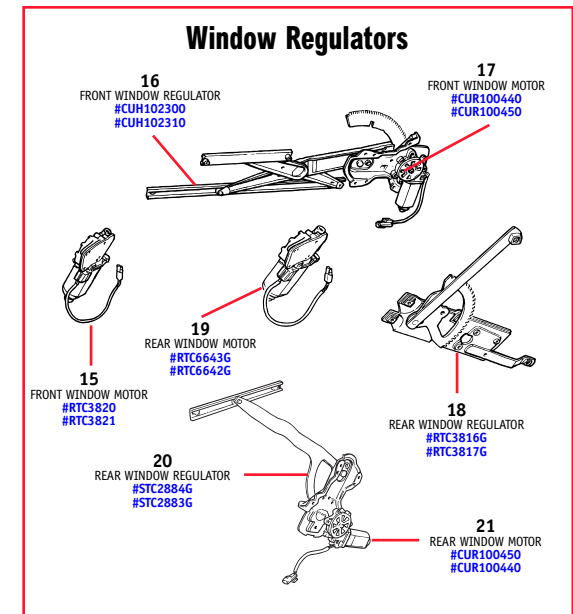


- | | | | |
|----|----------|---|---|
| 9 | MXC1254G | DOOR HANDLE, exterior, rear RH, Genuine | 1 |
| | MXC1255G | DOOR HANDLE, exterior, rear LH, Genuine | 1 |
| | | Through (v) VA746541 | |
| 10 | MXC3178G | GASKET, exterior door handle, rear, Genuine | 2 |
| 11 | MTC9204G | DOOR LATCH ASSEMBLY, rear RH, Genuine | 1 |
| | MTC9203G | DOOR LATCH ASSEMBLY, rear LH, Genuine | 1 |
| 12 | MUC1822G | DUST SEAL, rear door latch, Genuine | 2 |
| 13 | AMR3382G | ACTUATOR, rear door, Genuine | 2 |



- | | | | |
|----|---------|----------------------------------|---|
| 14 | RTC3814 | REGULATOR, window, front door RH | 1 |
| | | Through (v) SA137189 | |
| | RTC3815 | REGULATOR, window, front door LH | 1 |
| | | Through (v) SA137189 | |

ILL. No.	Part No.	Description	Qty. Rqd.
----------	----------	-------------	-----------



- | | | | |
|----|-----------|--|---|
| 15 | RTC3820 | MOTOR, window regulator, front door RH | 1 |
| | RTC3821 | MOTOR, window regulator, front door LH | 1 |
| | | Through (v) SA137189 | |
| 16 | CUH102300 | REGULATOR, window, front door RH | 1 |
| | | From (v) SA137190 on | |
| | CUH102310 | REGULATOR, window, front door LH | 1 |
| | | From (v) SA137190 on | |
| 17 | CUR100440 | MOTOR, window regulator, front door RH, | 1 |
| | | From (v) SA137190 on | |
| | CUR100450 | MOTOR, window regulator, front door LH, | 1 |
| | | From (v) SA137190 on | |
| 18 | RTC3816G | REGULATOR, window, rear door RH, Genuine | 1 |
| | | Up to (v) SA137189 | |
| | RTC3817G | REGULATOR, window, rear door LH, Genuine | 1 |
| | | Up to (v) SA137189 | |
| 19 | RTC6643G | MOTOR, window regulator, rear door RH, | 1 |
| | | Genuine | |
| | | Up to (v) SA137189 | |
| | RTC6642G | MOTOR, window regulator, rear door LH, | 1 |
| | | Genuine | |
| | | Up to (v) SA137189 | |
| 20 | STC2884G | REGULATOR, window, rear door RH, Genuine | 1 |
| | | From (v) SA137190 on | |
| | STC2883G | REGULATOR, window, rear door LH, Genuine | 1 |
| | | From (v) SA137190 on | |
| 21 | CUR100450 | MOTOR, window regulator, rear door RH, | 1 |
| | | From (v) SA137190 on | |
| | CUR100440 | MOTOR, window regulator, rear door LH, | 1 |
| | | From (v) SA137190 on | |

PRICES SUBJECT TO CHANGE.
Call for the Latest Pricing and Availability.

Ttl. No.	Part No.	Description	Qty. Rqd.
----------	----------	-------------	-----------

FRONT BODY FITTINGS

REMARKS LEGEND -

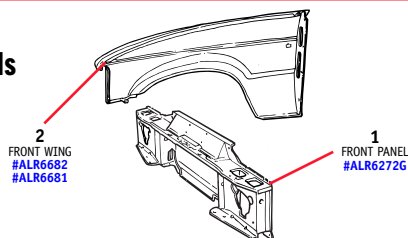
Vehicle i.d. (v) numbers:
SA = 1995 model year;
TA = 1996 model year;
VA = 1997 model year;
WA = 1998 model year;

MONEY-SAVING KITS NOTED IN RED TYPE



1
FRONT PANEL
ASSEMBLY
#ALR6272G

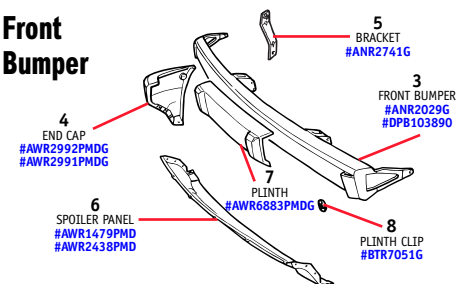
Front Panels



2
FRONT WING
#ALR6682
#ALR6681

1
FRONT PANEL
#ALR6272G

Front Bumper



4
END CAP
#AWR2992PMDG
#AWR2991PMDG

5
BRACKET
#ANR2741G

3
FRONT BUMPER
#ANR2029G
#DPB103890

6
SPOILER PANEL
#AWR1479PMD
#AWR2438PMD

8
PLINTH CLIP
#BTR7051G

- | | | | |
|---|-----------------------|---|------|
| 1 | ALR6272G | FRONT PANEL ASSEMBLY, Genuine | 1 |
| 2 | ALR6682 | WING, front, RH | 1 |
| | ALR6681 | Through 1995 model year;
can be fitted to later models
WING, front, LH | 1 |
| 3 | ANR2029G
DPB103890 | Through 1995 model year;
can be fitted to later models
BUMPER ASSEMBLY, front, black, Genuine
BUMPER ASSEMBLY, front, chrome,
LSE models from (v) WA746542 on | 1 |
| | ANR2029FK | FIXING KIT, Bumper Assembly, front | *NLA |
| 4 | AWR2992PMDG | END CAP ASSY, front bumper, RH,
Genuine | 1 |
| | AWR2991PMDG | From (v) 1996 model year on
END CAP ASSY, front bumper, LH, Genuine | 1 |
| 5 | ANR2741G | From (v) 1996 model year on
BRACKET, end cap support, Genuine | 2 |

Ttl. No.	Part No.	Description	Qty. Rqd.
----------	----------	-------------	-----------

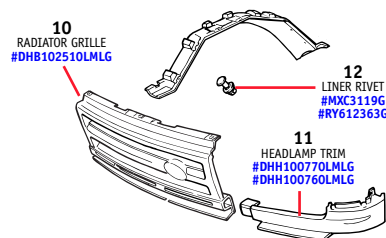
- | | | | |
|---|-------------|--|---|
| 6 | AWR1479PMD | SPOILER PANEL, front
<i>Not fog lamp fitted models</i> | 1 |
| | AWR2438PMD | SPOILER PANEL, front
<i>Fog lamp fitted models</i> | 1 |
| 7 | AWR6883PMDG | PLINTH, bumper, Genuine | 1 |
| 8 | BTR7051G | Through (v) VA557659 and VA723593
CLIP, plinth retaining, Genuine | 2 |



9
ARB BRUSH BAR
& BUMPER, upgrade with
winch mount
#9459DK
#9463

- | | | | |
|---|--------|--|---|
| 9 | 9459DK | ARB BRUSH BAR & BUMPER
upgrade with winch mount
<i>Vehicles with airbags</i> | 1 |
| | 9463 | ARB BRUSH BAR & BUMPER
upgrade with winch mount
<i>Vehicles with NO airbags</i> | 1 |
| | 9463NW | ARB BRUSH BAR & BUMPER
no winch mount
<i>Vehicles with NO airbags</i> | 1 |
| | TR14 | BUMPER ASSEMBLY, front,
uprated 'Terrain Master'
<i>Not for vehicles fitted with winch</i> | 1 |

Grille and Wheel Arch



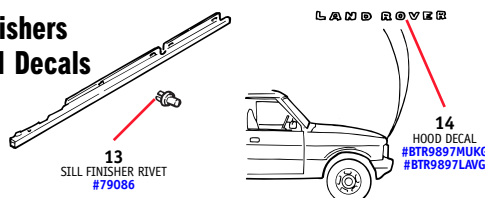
10
RADIATOR GRILLE
#DHB102510MLG

12
LINER RIVET
#MXC3119G
#RY612363G

11
HEADLAMP TRIM
#DHH100770MLG
#DHH100760MLG

- | | | | |
|----|--------------|--|------|
| 10 | DHB102510MLG | GRILLE, radiator, primed, Genuine | 1 |
| 11 | DHH100770MLG | TRIM, headlamp, LH, Genuine | 1 |
| | DHH100760MLG | TRIM, headlamp, RH, Genuine | 1 |
| 12 | MXC3119G | RIVET, wheelarch liner to wheel arch,
Genuine | 28 |
| | RY612363G | RIVET, wheelarch liner to wing, Genuine
<i>From (v) SA142913 on</i> | 6 |
| 13 | 79086 | RIVET, plastic, sill finisher | 40 |
| 14 | BTR9897MUKG | DECAL, hood, 'LAND ROVER', Mid-Silver,
Genuine | 1 |
| | BTR9897LAVG | DECAL, hood, 'LAND ROVER', Grey, Genuine | 1 |
| 15 | STC8550G | DECAL, brush bar, 'DISCOVERY', Genuine | 1 |
| 16 | EGM100192G | GUIDE ASSEMBLY SET, sunroof, Genuine | 2 |
| 17 | RTC6820G | MUDFLAP KIT, front, pair | 1 |
| | RTC6820FK | MUDFLAP FIXING KIT, front | *NLA |

Finishers and Decals



13
SILL FINISHER RIVET
#79086

14
HOOD DECAL
#BTR9897MUKG
#BTR9897LAVG

Ttl. No.	Part No.	Description	Qty. Rqd.
----------	----------	-------------	-----------



15
BRUSH BAR DECAL
#STC8550G

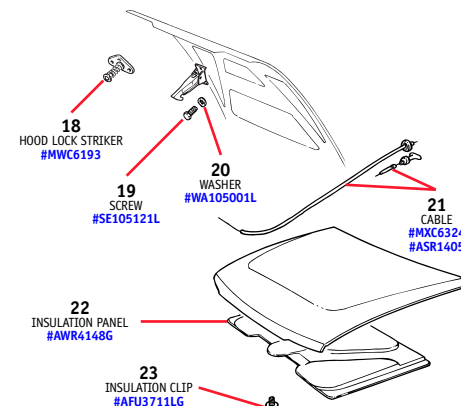


16
SUNROOF
GUIDE ASSEMBLY
SET
#EGM100192G



17
MUDFLAP KIT
#RTC6820G

Hood Fittings



18
HOOD LOCK STRIKER
#MWC6193

19
SCREW
#SE105121L

20
WASHER
#WA105001L

21
CABLE
#MXC6324
#ASR1405

22
INSULATION PANEL
#AWR4148G

23
INSULATION CLIP
#AFU3711LG

- | | | | |
|----|-----------|--|---|
| 18 | MWC6193 | STRIKER, hood lock | 1 |
| 19 | SE105121L | SCREW, safety catch | 2 |
| 20 | WA105001L | WASHER, plain, safety catch | 2 |
| 21 | MXC6324 | CABLE ASSEMBLY, hood release
Through (v) SA117986 | 1 |
| | ASR1405 | CABLE ASSEMBLY, hood release
From (v) SA117987 on | 1 |
| 22 | AWR4148G | INSULATION PANEL, hood, Genuine
From (v) 1996 model year on | 1 |
| 23 | AFU3711LG | CLIP, insulation panel, Genuine | 8 |

*NLA = No Longer Available



TO ORDER, CALL **1-800-533-2210**

ILL. No.	Part No.	Description	Qty. Rqd.
----------	----------	-------------	-----------

BACK DOOR & REAR BODY FITTINGS

REMARKS LEGEND -

Vehicle i.d. (v) numbers:

SA = 1995 model year;

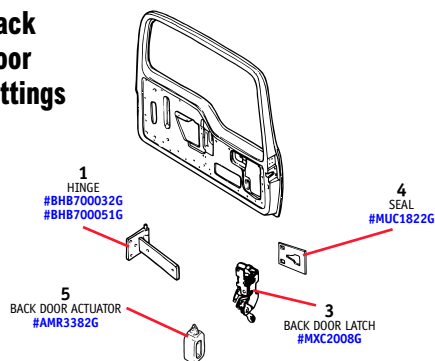
TA = 1996 model year

VA = 1997 model year

WA = 1998 model year

MONEY-SAVING KITS NOTED IN RED TYPE

Back Door Fittings



- | | | | |
|---|------------|---|---|
| 1 | BHB700032G | HINGE ASSEMBLY, back door, upper, Genuine | 1 |
| | BHB700051G | HINGE ASSEMBLY, back door, lower | 1 |
| 2 | CXB102190G | DOOR HANDLE, exterior, back door, Genuine | 1 |
| 3 | MXC2008G | DOOR LATCH ASSEMBLY, back door, Genuine | 1 |
| 4 | MUC1822G | DUST SEAL, door latch, Genuine | 1 |
| 5 | AMR3382G | ACTUATOR, back door lock, Genuine | 1 |
| 6 | ASR1515 | DOVETAIL, female, back door | 1 |
| | CKT490010G | DOVETAIL, male, back door, Genuine | 1 |



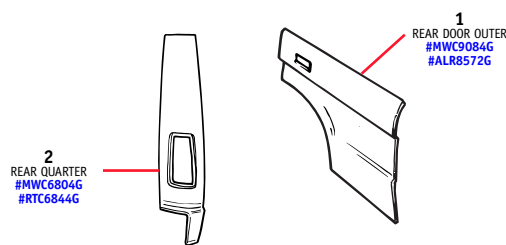
2
BACK DOOR HANDLE
#CXB102190G



6
BACK DOOR DOVETAIL
#ASR1515
#CKT490010G

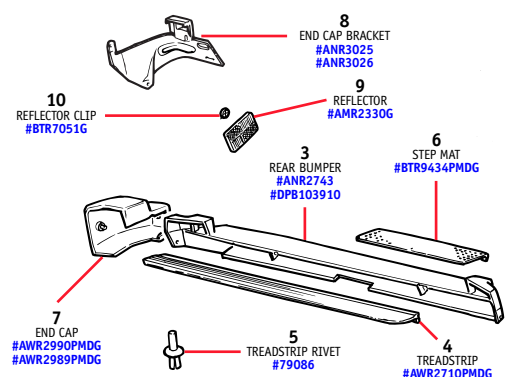
ILL. No.	Part No.	Description	Qty. Rqd.
----------	----------	-------------	-----------

Rear Panels



- | | | | |
|---|----------|-------------------------------------|---|
| 1 | MWC9084G | DOOR OUTER PANEL, rear, RH, Genuine | 1 |
| | | Through 1995 model year; | |
| | | can be fitted to later models | |
| | ALR8572G | DOOR OUTER PANEL, rear, RH, Genuine | 1 |
| | | From 1996 model year on | |
| 2 | MWC6804G | REAR QUARTER PANEL, RH, Genuine | 1 |
| | RTC6844G | REAR QUARTER PANEL, LH, Genuine | 1 |

Rear Bumper

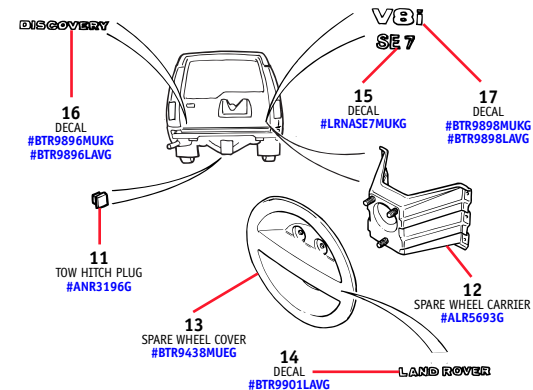


- | | | | |
|----|-------------|--|------|
| 3 | ANR2743 | BUMPER ASSEMBLY, rear, black | 1 |
| | DPB103910 | BUMPER ASSEMBLY, rear, chrome | 1 |
| | | LSE models from (v) WA746542 on | |
| | ANR2743FK | FIXING KIT, Bumper Assembly, rear | *NLA |
| 4 | AWR2710PMDG | TREADSTRIP, rear bumper, Genuine | 1 |
| | | From (v) SA118555 on | |
| 5 | 79086 | RIVET, plastic, treadstrip, Genuine | 8 |
| 6 | BTR9434PMDG | MAT, rear bumper step, Genuine | 1 |
| 7 | AWR2990PMDG | END CAP ASSY, rear bumper, RH, Genuine | 1 |
| | | From (v) 1996 model year on | |
| | AWR2989PMDG | END CAP ASSY, rear bumper, LH, Genuine | 1 |
| | | From (v) 1996 model year on | |
| 8 | ANR3025 | BRACKET, end cap support, RH | 1 |
| | ANR3026 | BRACKET, end cap support, LH | 1 |
| 9 | AMR2330G | REFLECTOR, end cap, Genuine | 2 |
| 10 | BTR7051G | CLIP, reflector retaining, Genuine | 2 |
| 11 | ANR3196G | PLUG, blanking tow hitch socket, Genuine | 1 |
| 12 | ALR5693G | CARRIER ASSEMBLY, spare wheel, Genuine | 1 |
| 13 | BTR9438MUEG | COVER, spare wheel, Silver, Genuine | 1 |
| 14 | BTR9901LAVG | DECAL, spare wheel cover, 'LAND ROVER', Dark Grey, Genuine | 1 |
| 15 | LRNASE7MUKG | DECAL, back door, 'SE7', Mid-Silver, Genuine | 1 |

*NLA = No Longer Available

ILL. No.	Part No.	Description	Qty. Rqd.
----------	----------	-------------	-----------

Back Door Fittings & Decals



- | | | | |
|----|-------------|--|------|
| 16 | BTR9896MUKG | DECAL, back door, 'DISCOVERY', Mid-Silver, Genuine | 1 |
| | BTR9896LAVG | DECAL, back door, 'DISCOVERY', Dark Grey, Genuine | 1 |
| 17 | BTR9898MUKG | DECAL, back door 'V8i', Mid-Silver, Genuine | 1 |
| | BTR9898LAVG | DECAL, back door 'V8i', Dark Grey, Genuine | 1 |
| 18 | RTC6821G | MUDFLAP KIT, rear, pair | 1 |
| | RTC6821FK | MUDFLAP FIXING KIT | *NLA |



18
MUDFLAP KIT
#RTC6821G

TECH TIP: Bumper Endcaps



There's no item on the exterior of your Discovery I that is as easily damaged as a bumper end cap—and no item so inexpensive and easy to replace. Order your genuine replacements here and pay less.

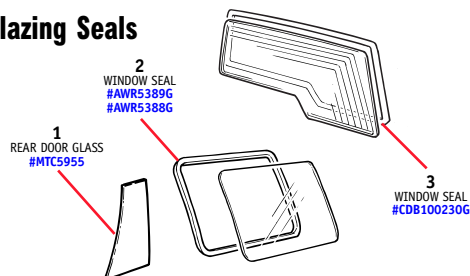
- Bumper Endcap - Rear Left Hand (AWR2989PMDG)
- Bumper Endcap - Rear Right Hand (AWR2990PMDG)
- Bumper Endcap - Front Left Hand (AWR2991PMDG)
- Bumper Endcap - Front Right Hand (AWR2992PMDG)
- Bumper Endcap Bracket Mount Rear Left Hand (ANR3026G)
- Bumper Endcap Bracket Mount Rear Right Hand (ANR3025G)

TIL. No.	Part No.	Description	Qty. Rqd.
----------	----------	-------------	-----------

GLAZING, MIRRORS & INTERIOR TRIM

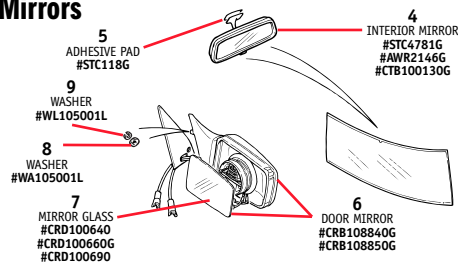
MONEY-SAVING KITS NOTED IN RED TYPE

Glazing Seals



- | | | | |
|---|------------|---|---|
| 1 | MTC5955 | GLASS, quarterlight, rear door LH Through (v) VA714241 and VA546029 | 1 |
| 2 | AWR5389G | SEAL, window, rear body side, LH, Genuine | 1 |
| | AWR5388G | SEAL, window, rear body side, RH, Genuine | 1 |
| 3 | CD8100230G | SEAL, window, back door, Genuine | 1 |

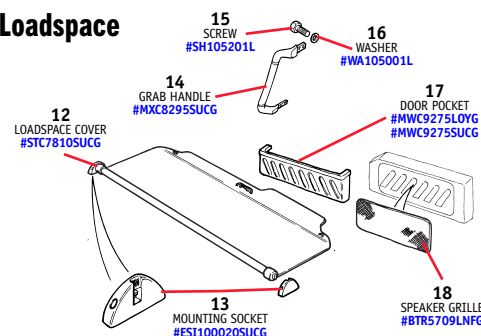
Mirrors



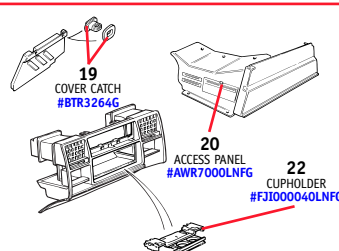
- | | | | |
|----|------------|---|---|
| 4 | STC4781G | MIRROR, interior, manual dip, Genuine | 1 |
| | AWR2146G | MIRROR, interior, auto dim, Genuine | 1 |
| | CTB100130G | MIRROR, interior, auto dim, Genuine | 1 |
| 5 | STC118G | PAD, adhesive, interior mirror, Genuine | 1 |
| 6 | CRB108840G | MIRROR, door, convex glass, RH, Genuine | 1 |
| | CRB108850G | MIRROR, door, flat glass, RH, Genuine | 1 |
| 7 | CRD100640 | MIRROR GLASS, outside mirror, right hand side | 1 |
| | CRD100660G | MIRROR GLASS, outside mirror, right hand side | 1 |
| | CRD100690 | MIRROR GLASS, outside mirror, left hand side | 1 |
| 8 | WA105001L | WASHER, plain, mirror fixing | 6 |
| 9 | WL105001L | WASHER, locking, mirror fixing | 6 |
| 10 | AWR2211G | COVER, seat switch, LH, Genuine | 1 |
| | AWR2212G | COVER, seat switch, RH, Genuine | 1 |
| 11 | AWR1399G | ASH TRAY, rear, Genuine | 1 |

TIL. No.	Part No.	Description	Qty. Rqd.
----------	----------	-------------	-----------

Loadspace



Seats and Fascia



- | | | | |
|----|---------------|---|---|
| 12 | STC7810SUCG | COVER, loadspace, Bahama Beige, Genuine | 1 |
| 13 | ESI100020SUCG | MOUNTING SOCKET, loadspace cover, Bahama Beige, Genuine | 2 |
| 14 | MXC8295SUCG | GRAB HANDLE, back door post, Bahama Beige, Genuine | 1 |
| 15 | SH105201L | SCREW, grab handle to door post | 4 |
| 16 | WA105001L | WASHER, plain | 4 |
| 17 | MWC9275LOYG | DOOR POCKET, rear, granite, Genuine | 1 |
| 18 | BTR5709LNFG | DOOR POCKET, rear, bahama beige, Genuine | 1 |
| 19 | BTR3264G | SPEAKER GRILLE, subwoofer, Genuine | 1 |
| | | CATCH, seat plinth cover, Genuine | 2 |
| 20 | AWR7000LNFG | For models fitted with CD player | 2 |
| 21 | LRN1292MLG | ACCESS PANEL, seat box, Genuine | 1 |
| 22 | FJ1000040LNFG | RETAINER KIT, fascia, Genuine | 1 |
| 23 | STC8030G | CUPHOLDER ASSEMBLY, fascia, Genuine | 1 |
| | | ROLLER BLIND KIT, car set of blinds with fixings, Genuine | 1 |
| 24 | MWC7756SUCG | DOOR MAP POCKET, front left, Bahama Beige, Genuine | 1 |
| | MWC7757SUCG | DOOR MAP POCKET, front right, Bahama Beige, Genuine | 1 |
| | AWR2615LOYG | DOOR MAP POCKET, front left, Granite, Genuine | 1 |
| | AWR2614LOYG | DOOR MAP POCKET, front right, Granite, Genuine | 1 |
| | AWR2615SUCG | DOOR MAP POCKET, front left, Bahama Beige, Genuine | 1 |
| | AWR2614SUCG | DOOR MAP POCKET, front right, Bahama Beige, Genuine | 1 |
| 25 | EGP100340LUMG | From 1996 up to 1999 model year | 2 |
| 26 | BTR3088PMAG | RETAINER, sun visor, Genuine | 1 |
| | FIF100150PMAG | MAT, for automatic console, Genuine | 1 |
| | | MAT, for manual console, Genuine | 1 |

TIL. No.	Part No.	Description	Qty. Rqd.
----------	----------	-------------	-----------



- 24
DOOR MAP POCKET
#MWC7756SUCG
#MWC7757SUCG
#AWR2615LOYG
#AWR2614LOYG
#AWR2615SUCG
#AWR2614SUCG



- 26
CONSOLE MAT
#BTR3088PMAG
#FIF100150PMAG

Common Replacement Items for Discovery I

Discovery I Replacement Mirrors



If you're an off-road enthusiast who pushes the limits of your Disco I— you may be in need of new side or rear view mirrors. We have the genuine replacements you need to get your Disco I back up to snuff.

Door Mirror - Right Hand (CRB108840G)

Door Mirror - Left Hand (CRB108850G)

Rear View Interior Mirror with Auto-Dim (AWR2146G)

Rear View Interior Mirror w/ Manual Dim (STC4781G)



Discovery I Loadspace Cover Mount

Loadspace Cover Mount Bracket - (ESI100020SUCG)

Loadspace Protector - PVC Nylon (STC8144G)



Discovery I Loadspace Cover (without rear a/c)

We have replacement loadspace covers for the Discovery I in stock and in beige to match your interior. A horizontal vinyl "window shade" that keeps prying eyes from seeing what you've got loaded in the back.

Loadspace Cover - Discovery I (without rear a/c) (STC7810SUCG)



TO ORDER, CALL **1-800-533-2210**