

1	-	Anti-theft alarm horn (if fitted)
2	-	right-hand (RH) front door switch
3	-	Intrusion detection module (90/110 station wagon shown)
4	-	RH rear door switch (if fitted)
5	-	Instrument cluster
6	-	Tail door switch
7	-	left-hand (LH) rear door switch (if fitted)
8	-	Anti-theft alarm horn relay (if fitted)
9	-	LH front door switch
10	-	Anti-theft system module
11	-	Hood switch
12	-	Battery backed sounder (if fitted)

OVERVIEW

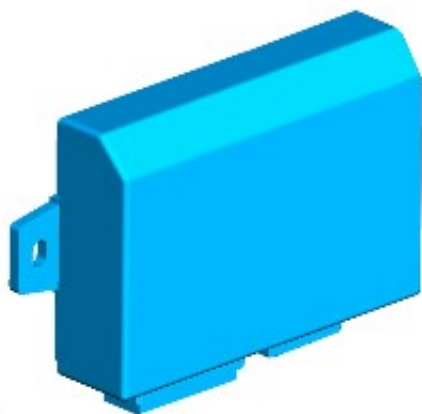
The 10AS anti-theft system monitors the hinged panels for unauthorized opening. The system also monitors intrusion within the cabin. Depending on market specification, the vehicle may be fitted with either a battery backed sounder or an anti-theft alarm horn.

The controlling software for the active anti-theft system is contained within the anti-theft system module. The anti-theft system module also controls;

- the passive anti-theft system (engine immobilization).
For additional information, refer to: Anti-Theft - Passive (419-01B, Description and Operation).
- the central locking system.
For additional information, refer to: Handles, Locks, Latches and Entry Systems (501-14, Description and Operation).
- interior lighting.
For additional information, refer to: Interior Lighting (417-02, Description and Operation).
- the hazard flashers.
For additional information, refer to: Exterior Lighting (417-01, Description and Operation).

The active anti-theft system is armed by pressing the lock button on the remote handset or using the vehicle key in the drivers door lock. Using the remote handset will arm both the perimeteric and volumetric anti-theft systems. Using the vehicle key will only arm the perimeteric anti-theft system.

ANTI-THEFT SYSTEM MODULE



E83589

The anti-theft system module is located behind the instrument cluster and receives a permanent battery supply from the battery junction box (BJB). The control module incorporates a radio frequency (RF) receiver and antenna to receive signals transmitted from the remote handset.

Depending on market specification, the module will operate at one of two frequencies. This is identified by a label mounted on the module casing. The table below shows the frequencies available for each market.

Frequency	Markets
433 MHz	Europe, Gulf States, South Africa
315 MHz	North America, South East Asia, Japan, Australia

The anti-theft system module also incorporates an internal inertia switch. In the event of an impact of sufficient severity to trigger the inertia switch when the ignition switch is in position II, the anti-theft system module will unlock all doors and operate the hazard flashers. The anti-theft system module will remain in this mode of operation for 2 minutes. To deactivate the hazard flashers and restore the anti-theft system module to its normal mode of operation, the ignition switch should be turned to position 0 and back to position II after the 2 minute period has expired.

REMOTE HANDSET