


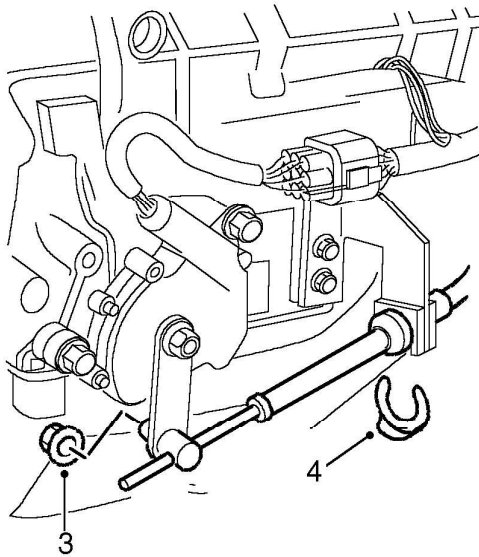


Cable and lever assembly - selector

44.15.08

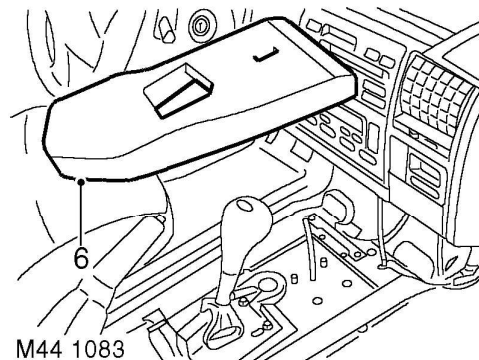
Remove

1. Remove centre console.
 **INTERIOR TRIM COMPONENTS, REPAIRS, Console - centre - automatic models.**
2. Raise vehicle on ramp.



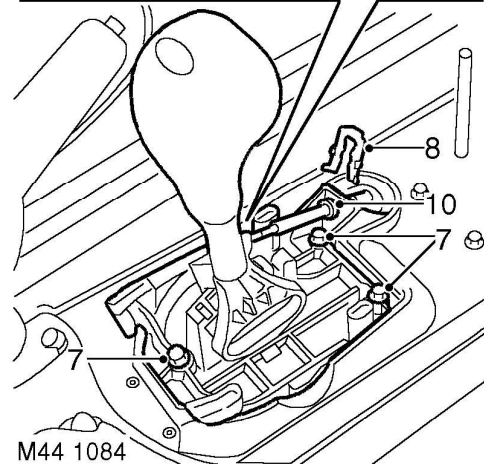
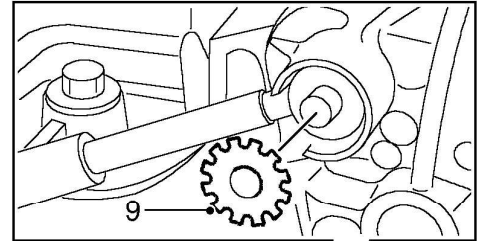
M44 1082

3. Loosen selector cable trunnion nut.
4. Remove 'C' clip and release selector cable from gearbox bracket.
5. Lower vehicle on ramp.



M44 1083


6. Remove sound deadener pad.




M44 1084

7. Remove 3 bolts securing selector lever bracket to tunnel, remove selector lever.
8. Remove 'C' clip securing outer cable to selector lever bracket.
9. Remove locking ring securing inner cable to selector lever.
10. Release inner cable from selector lever, release cable from grommet and remove cable from selector lever bracket.

Refit

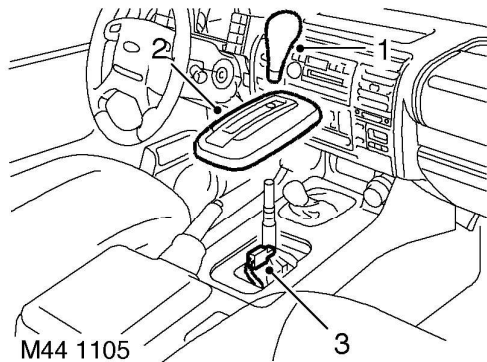
1. Position cable through grommet, align to bracket and secure with 'C' clip.
2. Fit inner cable to selector lever and secure with locking ring.
3. Feed selector cable through tunnel, align bracket, fit and tighten bolts.
4. Fit sound deadener pad.
5. Fit centre console.
 **INTERIOR TRIM COMPONENTS, REPAIRS, Console - centre - automatic models.**
6. Position selector cable through trunnion and gearbox bracket, secure with 'C' clip.
7. Adjust selector cable.

 **AUTOMATIC GEARBOX - ZF4HP22 - 24, ADJUSTMENTS, Cable - selector.**

Selector indicator

🔑 44.15.10

Remove



1. Remove knob from gear lever.
2. Release selector panel from centre console.
3. Disconnect multiplug from selector panel and remove panel.

Refit


1. Position selector panel and connect multiplug.
2. Secure selector panel to console.
3. Fit gear lever knob.

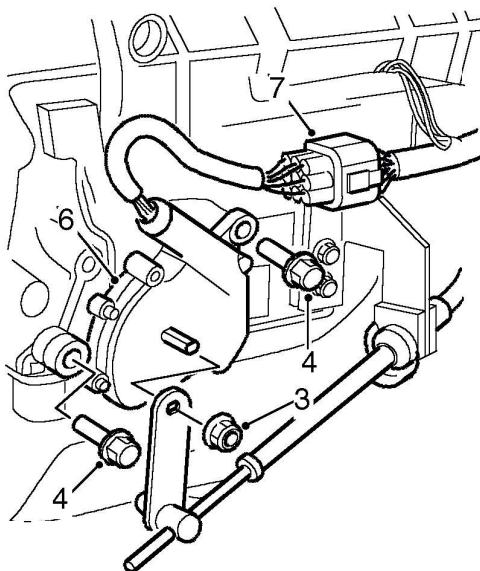


Switch - starter inhibitor

44.15.19

Remove

1. **Diesel models:** Remove exhaust front pipe.
 **MANIFOLDS AND EXHAUST SYSTEMS - Td5, REPAIRS, Pipe - front.**
2. Move the selector lever to position 'P'.

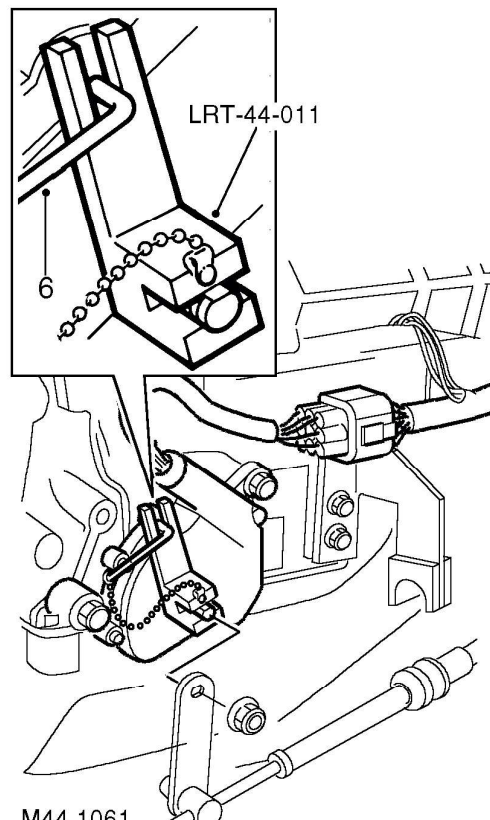


M44 1060A


3. Remove nut securing selector lever to gearbox selector shaft and release lever.
4. Remove 2 bolts securing inhibitor switch to gearbox.
5. Release multiplug from gearbox bracket.
6. Release inhibitor switch from selector shaft.
7. Disconnect switch multiplug and remove switch.

Refit

1. Ensure 'P' is selected by rotating selector shaft fully clockwise.
2. Engage 'N' by rotating selector shaft 2 detents anti-clockwise.
3. Position inhibitor switch to selector shaft, connect multiplug and secure multiplug to gearbox bracket.
4. Engage switch to selector shaft, and fit but do not tighten retaining bolts.



M44 1061

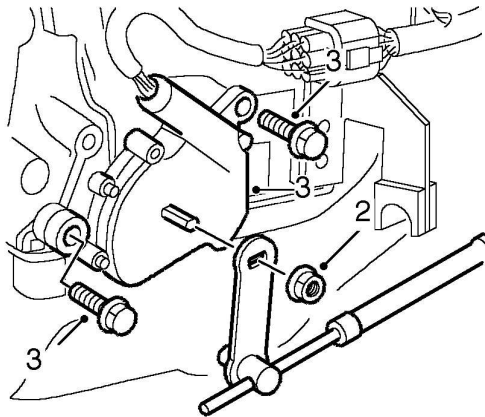
5. Fit tool **LRT-44-011** to selector shaft.
6. Insert setting pin into tool. Rotate switch until setting pin engages with hole in switch as shown and tighten bolts to 10 Nm (7 lbf.ft).
7. Remove setting tool **LRT-44-011**.
8. Position selector lever to selector shaft and tighten nut to 26 Nm (19 lbf.ft).
9. **Diesel models:** Fit exhaust front pipe.
 **MANIFOLDS AND EXHAUST SYSTEMS - Td5, REPAIRS, Pipe - front.**

Seal - selector shaft

🔑 44.15.34

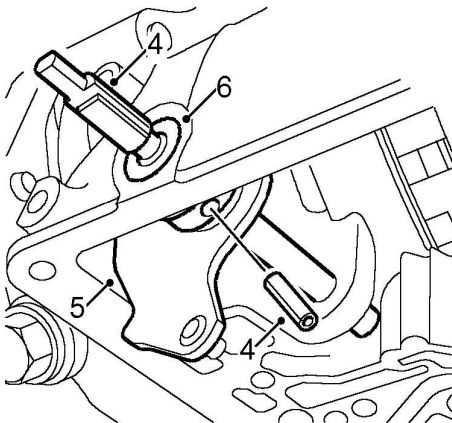
Remove

1. Remove valve body assembly.
👉 **AUTOMATIC GEARBOX - ZF4HP22**
- 24, REPAIRS, Valve body assembly.



M44 1114A

2. Remove nut securing selector shaft lever and release lever from shaft.
3. Remove 2 bolts securing gear selector switch to gearbox and remove switch.



M44 1115A

4. Drift out and discard selector quadrant roll pin.
Remove selector shaft.
5. Remove selector quadrant and connecting rod.
6. Remove oil seal taking care not to damage seal housing.

Refit

1. Clean shaft and seal housing.
2. Using a suitable adapter, fit new seal.
3. Position selector quadrant and connecting rod.
4. Position selector shaft and secure to quadrant using new roll pin.
5. Fit valve body assembly.


👉 **AUTOMATIC GEARBOX - ZF4HP22**
- 24, REPAIRS, Valve body assembly.

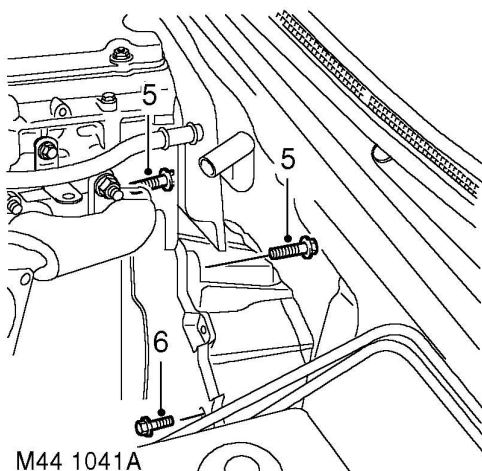



Gearbox - convertor and transfer gearbox - Diesel

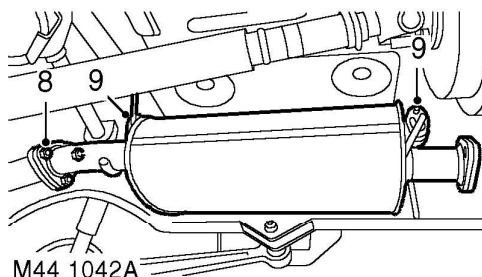
44.20.04.99

Remove





1. Release fixings and remove battery cover.
2. Disconnect battery earth lead.
3. Raise vehicle on a ramp.
4. Remove starter motor.
 **CHARGING AND STARTING, REPAIRS, Starter motor - diesel.**

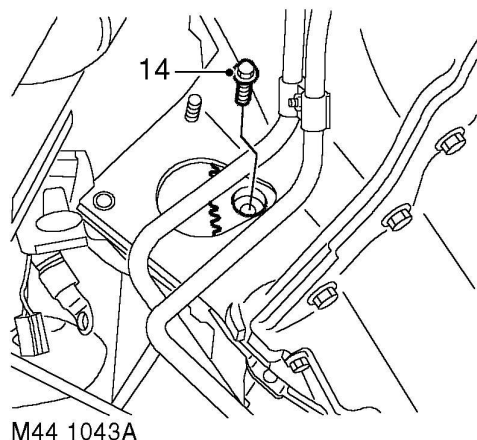


5. Remove 2 upper bolts securing gearbox housing to engine.
6. Remove bolt securing closing plate to gearbox housing.
7. Remove exhaust front pipe.
 **MANIFOLDS AND EXHAUST SYSTEMS - Td5, REPAIRS, Pipe - front.**

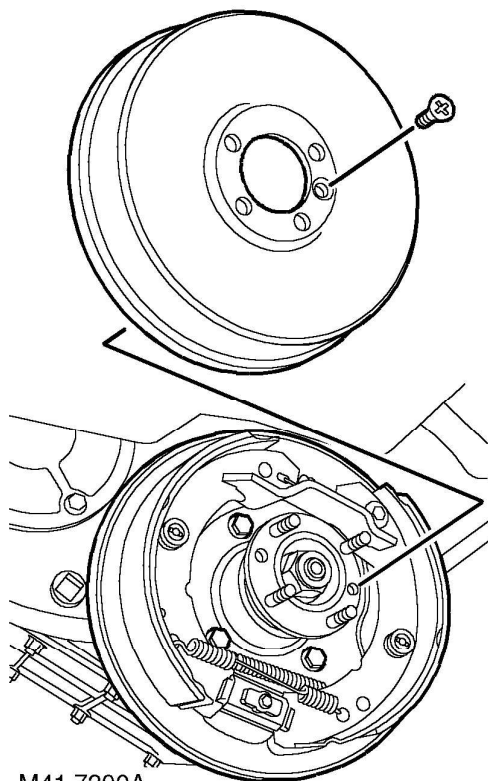


8. Remove 3 nuts securing intermediate silencer to tail pipe.
9. Release and remove silencer from rubber mountings.

10. Drain automatic gearbox oil.
 **MAINTENANCE, PROCEDURES, Automatic gearbox.**
11. Drain transfer gearbox oil.
 **MAINTENANCE, PROCEDURES, Transfer box.**
12. Remove front propeller shaft.
 **PROPELLER SHAFTS, REPAIRS, Propeller shaft - front.**
13. Remove rear propeller shaft.
 **PROPELLER SHAFTS, REPAIRS, Propeller shaft - rear.**

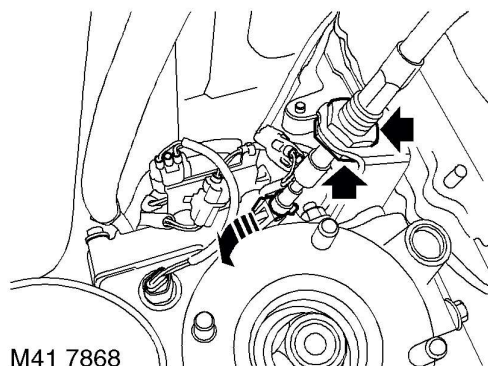


14. Remove and discard 3 bolts securing torque converter to drive plate.



M41 7390A

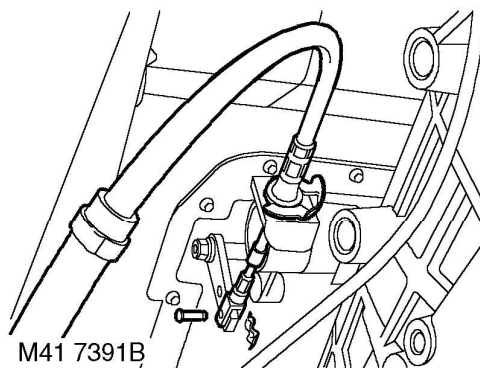
15. Remove handbrake drum retaining screw and remove brake drum.
16. Remove 4 bolts from handbrake back plate, release back plate and tie aside.
17. **Models fitted with high/low shift interlock solenoid:** Release interlock solenoid multiplug and disconnect multiplug from main harness.
18. **Models fitted with high/low shift interlock solenoid:** Remove sleeve retaining rings and remove sleeve from high/low selector cable.



M41 7868

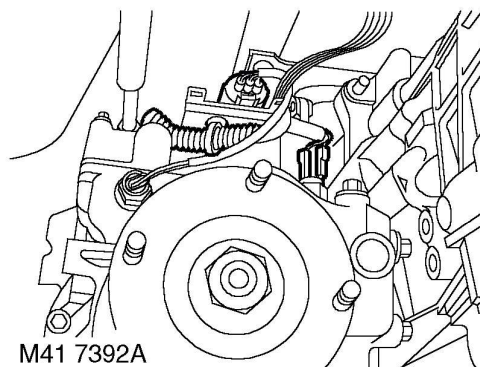
19. **If fitted** Remove and discard clevis pin securing differential lock selector cable to transfer gearbox.

20. **If fitted** Loosen locknuts securing differential lock selector cable to differential lock selector cable abutment bracket.
21. **If fitted** Release and remove differential lock selector cable from differential lock selector cable abutment bracket.



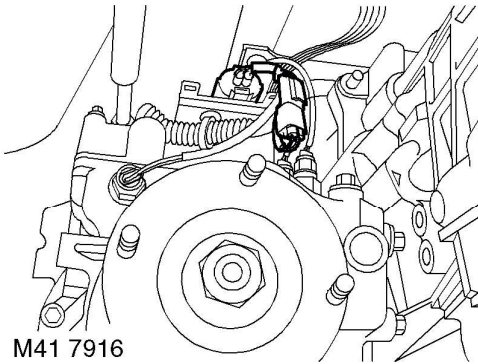
M41 7391B

22. Remove clevis pin securing high/low ratio selector cable to selector lever, remove 'C' clip and remove outer cable from abutment bracket.



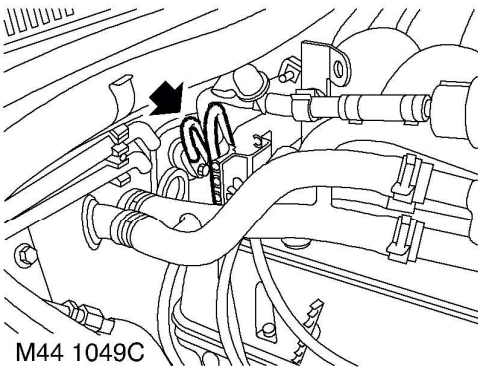
M41 7392A

23. **Up to 03 Model Year - If fitted:** Disconnect from differential lock warning lamp switch and multiplugs from high/low ratio switch and neutral sensor.



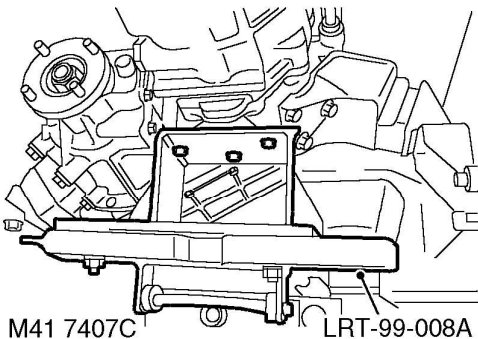
M41 7916

24. **03 Model Year onwards - If fitted:** Release and disconnect both differential lock warning lamp switch multiplugs from main harness.
25. Remove cable tie and multiplug from bracket on transfer box.



M44 1049C

26. Release transfer and automatic gearbox breather pipes from clip at rear of cylinder block.

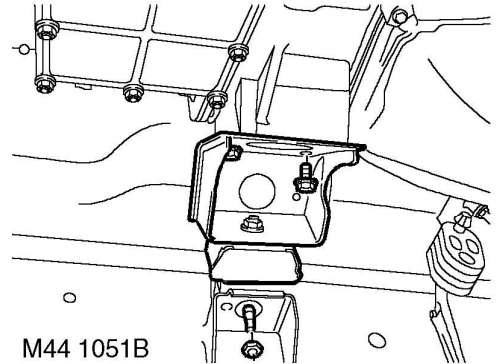


M41 7407C

LRT-99-008A

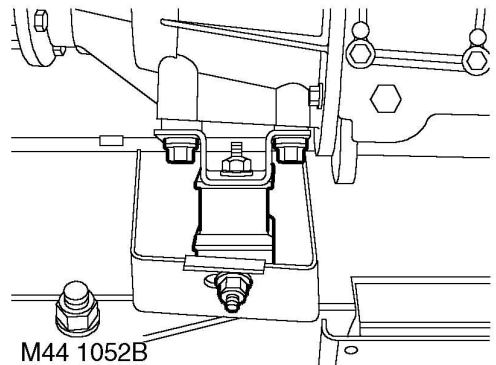
27. Position gearbox support jack and secure tool **LRT-99-008A** to support plate on jack.

28. Position a second support jack under engine using a block between engine sump and jack to prevent damage to sump.



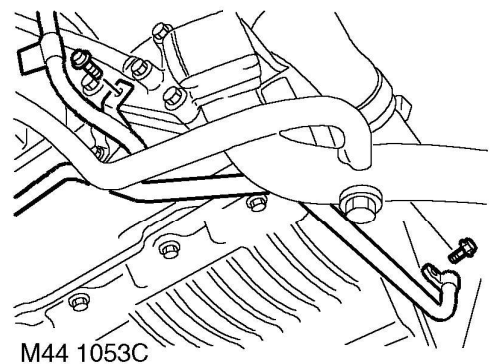
M44 1051B

29. Remove 4 bolts and nut, remove engine LH rear mounting.



M44 1052B

30. Remove 4 bolts and nut, remove engine RH rear mounting.



M44 1053C

31. Remove 2 bolts securing gearbox oil cooler pipe clips to engine sump and alternator mounting bracket.