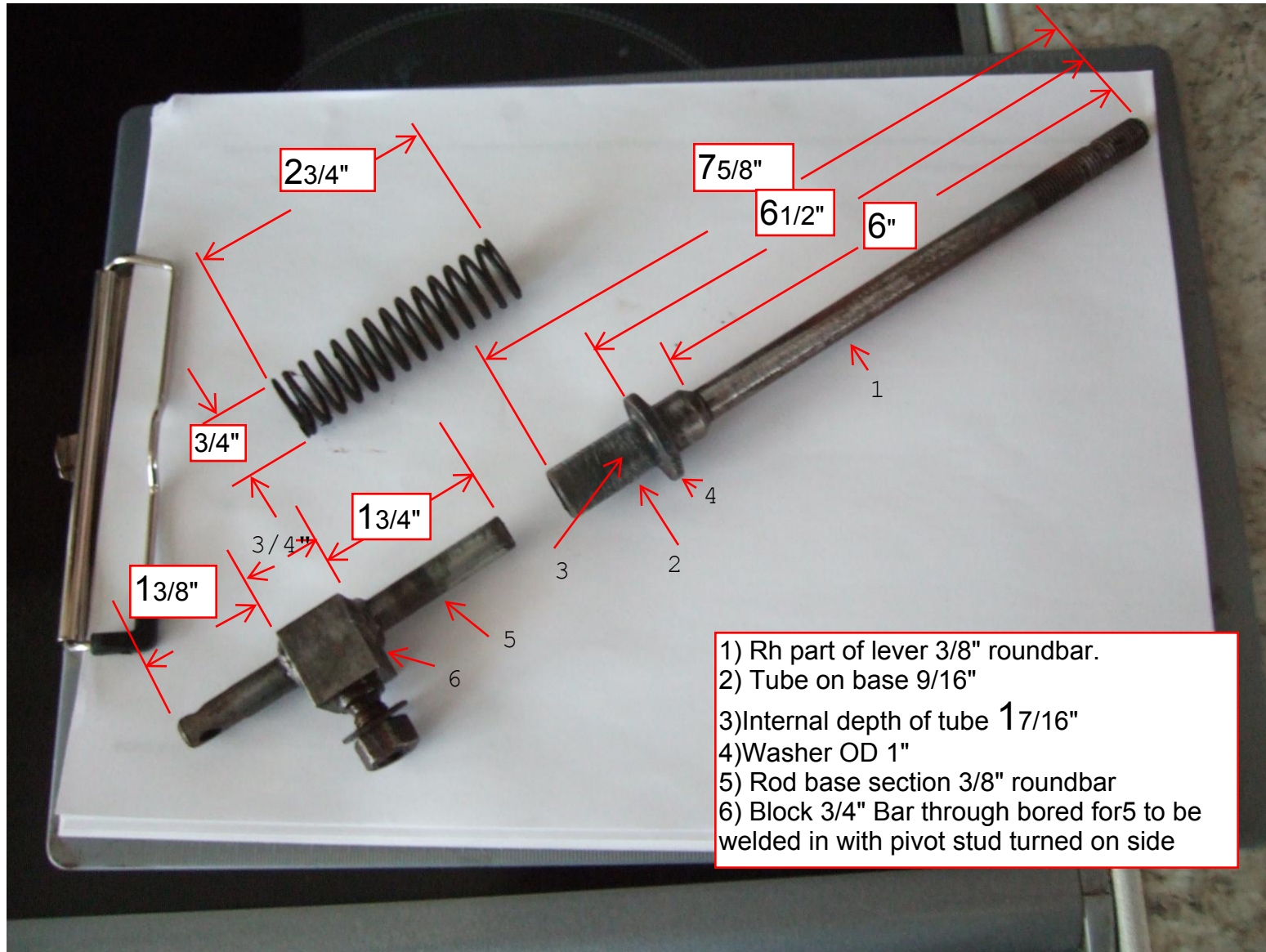
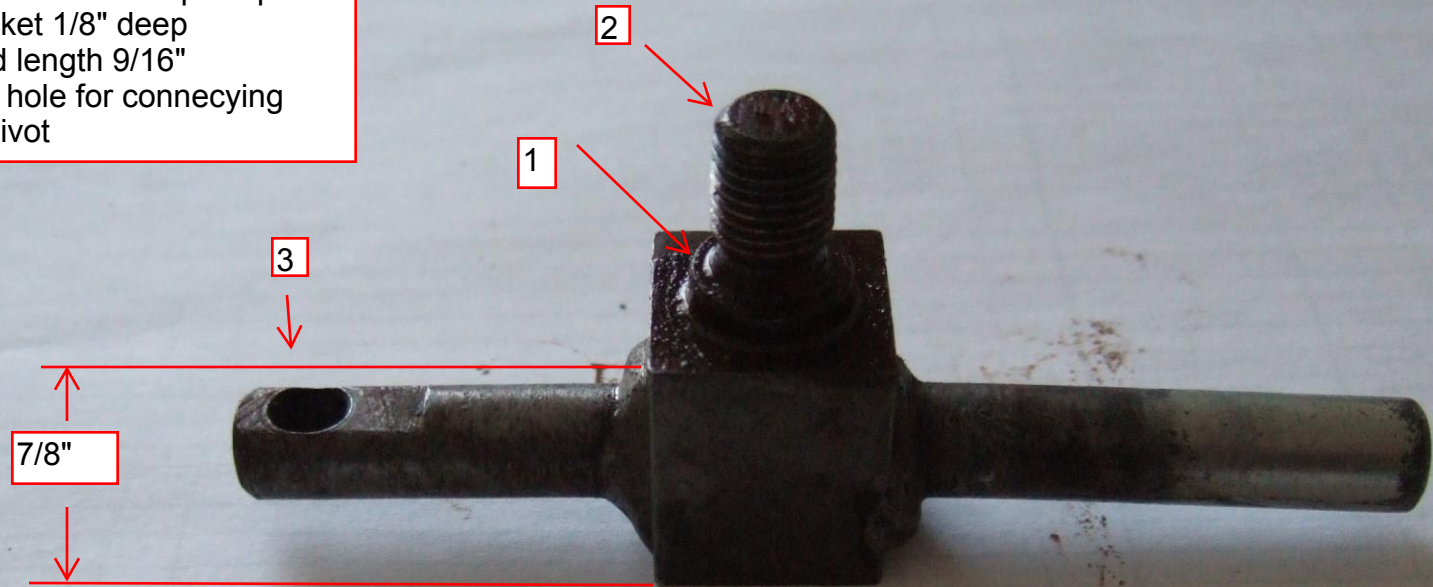


Control lever



Pivot side view

- 1) 1/2" shoulder as pivot point in bracket 1/8" deep
- 2) Stud length 9/16"
- 3) 1/4" hole for connecting lever pivot



Shaft engage linkage

Material 20mm *4mm flat bar
6mm or 1/4" Roundbar
Lefthand set of holes tapped 6mm
for shaft retract portion.

