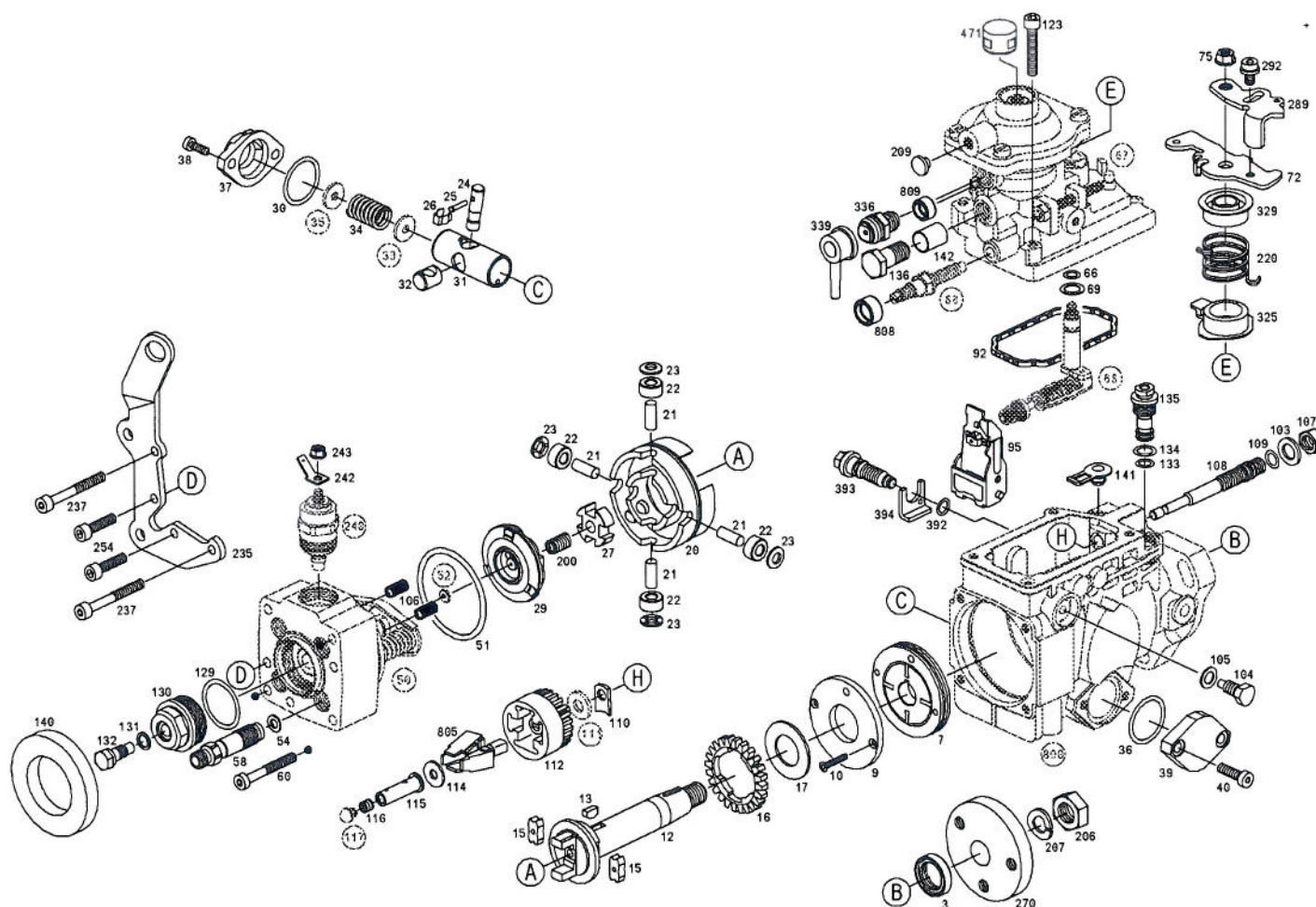




Replacing Parts

Product

0 460 414 080 - Distributor injection pump - VE4/11F1900R347-1



Position	Order number	Info	Quantity	Designation
3	2 460 283 001	A	1	SHAFT SEALING RING
7	1 467 030 308	B	1	SUPPLY PUMP
7	1 467 030 303	A	1	SUPPLY PUMP
9	1 460 134 317	B	1	SUPPORT RING
10	1 463 429 300	B	2	TORX FLAT-HEAD SCREW
12	1 466 100 405	B	1	DRIVE SHAFT
13	1 460 023 302	B	1	WOODRUFF KEY
15	1 460 056 302	A	2	BUFFER
16	1 466 317 301	B	1	TOOTHED GEAR
17	2 460 102 001	B	1	SLIDING DISC
20	1 460 232 328	B	1	ROLLER RING
21	2 463 100 002	B	4	BEARING PIN
22	2 460 300 005	B	4	ROLLER
23	2 460 120 013	B	4	FRICTION WASHER
24	1 463 103 315	B	1	ADJUSTING PIN

Replacing Parts

0 460 414 080 - Distributor injection pump - VE4/11F1900R347-1

24/05/2013

11:37:38

25	1 463 120 359	B	1	RETAINING PIN
26	1 461 310 300	B	1	RETAINING BRACKET
27	1 460 140 334	B	1	CROSS DISC
29	1 466 110 604	A	1	CAM PLATE
30	2 460 223 001	A	1	SEAL RING
31	1 463 104 469	B	1	TIMING-DEVICE PISTON
32	1 463 218 312	B	1	SLIDING PIECE
33	1 460 100 902	B	2	SELECTION GROUP SHIM RING
34	1 464 619 817	A	1	COMPRESSION SPRING
34	1 464 619 737	A	1	COMPRESSION SPRING
35	1 460 100 902	B	1	SELECTION GROUP SHIM RING
36	2 460 223 001	A	1	SEAL RING
37	1 465 530 301	B	1	CLOSING COVER
38	1 463 414 344	B	2	TORX FILLISTER SCREW
39	1 461 074 312	B	1	COVER PLATE
40	1 463 414 344	B	2	TORX FILLISTER SCREW
50	1 468 334 851	A	1	HYDRAULIC HEAD
51	2 460 210 012	A	1	O-RING
52		Z	1	SELECTION GROUP SHIM
54	1 460 105 305	A	4	GASKET
58		Z	4	FITTING
60	1 463 414 312	B	2	TORX FILLISTER SCREW
66	1 460 210 008	A	1	O-RING
67	1 467 134 300	B	1	MANIFOLD-PRESSURE COMP.
68	1 463 163 127	B	1	PART LOAD GOVERNOR
69	1 200 101 640	B	1	SHIM
72	1 461 900 556	B	1	CONTROL LEVER
75	1 463 315 310	B	1	FLANGE NUT
88		Z	1	ADJUSTING SCREW
92	1 461 015 302	A	1	GASKET
95	1 461 907 158	B	1	FULCRUM LEVER
103	2 916 012 017	B	1	PLAIN WASHER, DIN 433 - 10,5-160 HV
104	1 463 452 313	B	2	SLOTTED SHOULDER SCREW
105	1 460 105 307	A	2	GASKET
106	1 464 613 611	A	2	COMPRESSION SPRING
107	1 463 300 304	B	1	HEXAGON NUT
108	1 463 590 311	B	1	GOVERNOR SHAFT
109	1 460 210 313	A	1	O-RING
110	1 461 030 343	B	1	SHIM PLATE, 0,95 MM
111		Z	1	SELECTION GROUP SUPPORTING DISC
112	1 466 317 319	B	1	FLYWEIGHT ASSEMBLY
114	1 460 100 370	B	1	SHIM RING
115	1 460 422 324	B	1	SLIDING SLEEVE
116	1 460 508 309	B	1	SEALING CAP
117	1 463 203 907	B	1	SELECTION GROUP PLUG
123	2 910 142 207	B	4	HEX-SOCKET-HEAD CAP SCREW, ISO 4762 - M6x35-8.8

Replacing Parts

0 460 414 080 - Distributor injection pump - VE4/11F1900R347-1

24/05/2013

11:37:38

129	1 460 210 349	A	1	O-RING
130	1 463 461 306	B	1	SCREW PLUG
131	1 460 105 306	A	1	FLAT SEAL RING
132	1 463 453 306	B	1	BLEEDER SCREW
133	1 460 225 081	A	1	O-RING
134	1 460 225 082	A	1	O-RING
135	1 460 362 419	B	1	CONTROL VALVE
136	1 463 456 344	A	1	HOLLOW BOLT
140	1 460 591 315	B	1	PROTECTIVE CAP
141	2 410 508 006	B	1	PROTECTIVE CAP
142	1 410 407 004	B	1	PROTECTION SLEEVE
200	2 464 633 002	A	1	COMPRESSION SPRING
206	2 915 021 004	B	1	HEXAGON NUT, DIN 934 - M14x1,5-8-A
207	2 916 699 137	B	1	SPRING LOCK WASHER, DIN 128 - A14-FSt
209	1 900 508 202	B	1	PROTECTIVE CAP
220	1 464 651 461	A	1	COILED SPRING
235	1 461 021 714	B	1	SUPPORT PLATE
237	1 463 414 305	B	2	TORX FILLISTER SCREW
240	0 330 001 041	B	1	PUSHING ELECTROMAGNET
242	1 464 477 302	B	1	BLADE TERMINAL
243	1 463 314 306	B	1	FLANGE NUT
254	2 910 142 203	B	2	HEX-SOCKET-HEAD CAP SCREW, ISO 4762 - M6x25-8.8
270	1 466 434 322	B	1	COUPLING HALF
289	1 461 900 503	B	1	CONTROL LEVER
292	1 463 433 310	B	1	WASHER-AND-SCREW ASSEMBLY
325	1 460 522 328	B	1	SPRING SEAT
329	1 460 522 304	B	1	SPRING SEAT
336	1 463 386 301	B	1	VENT FITTING
339	1 460 558 303	B	1	PROTECTIVE CAP
392	1 460 210 322	A	1	O-RING
393	1 463 414 306	B	1	LOCKING SCREW
394	1 461 331 325	B	1	INTERMEDIATE PLATE
471	1 460 505 308	B	1	CLOSURE CAP
800	1 465 130 704	A	1	ASSEMBLY OF SERVICE PARTS PUMP HOUSING
805	1 467 010 054	B	1	PARTS SET FLYWEIGHT
808	1 460 591 313	B	1	SEALING CAP, RED
809	2 420 580 005	B	1	SEALING CAP, RED

Explanations

A	Wear part
B	Service part
Z	Not a service part