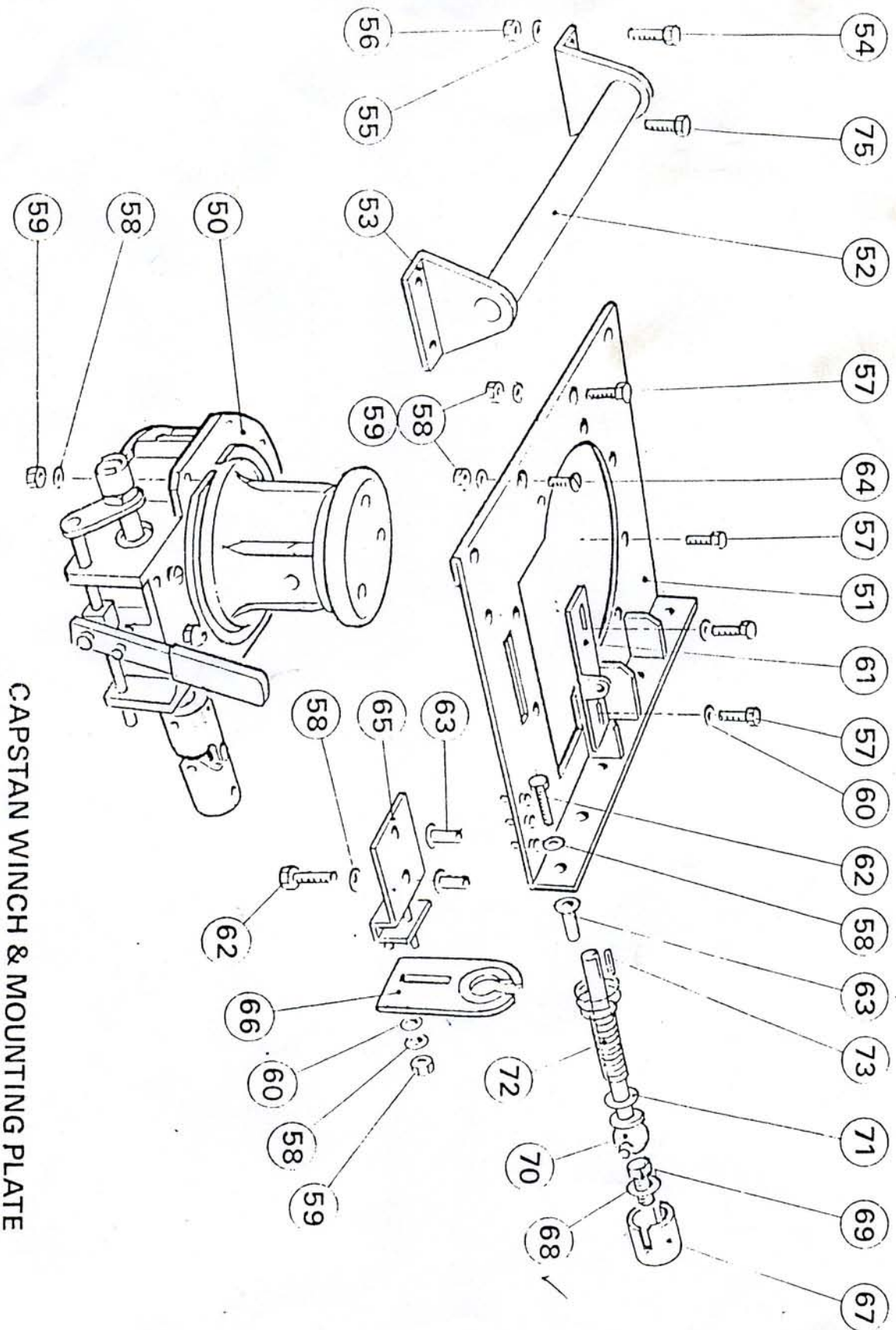


CAPSTAN WINCH 5244

## PARTS LIST - CAPSTAN WINCH

ITEM NUMBER	NAME	FWL PART NO.	NUMBER PER UNIT
1	Bollard Cap	100-A2	1
2	Bollard & Shaft Assembly	5246-A3	1
3	Bolt	164-A4	3
4	Spring Washer	165-A4	3
5	Key	104-A4	1
6	Flange Bearing	5151-A4	1
7	Worm Box	5142-A0	1
8	Circlip	115-A4	2
9	Thrust Washer	116-M	2
10	Operating Shaft Assembly	117-A3	1
11			
12	Wormwheel	111-A2	1
13	Thrust Washer	4-03-3249083	2
14	Gasket	113-A2	1
15	Circlip	112-A4	1
16	Baseplate Assembly	5144-A2	1
17	Self Tapping Screw	151-A4	10
18	Roll Pin	4-56-301013	2
19	Shim .08 mm thick	108-A3	As requ'd
20	Grub Screw	139-A4	1
21	Nylon Plug	140-A4	1
22	Roll Pin	145-A4	1
23	Pivot Block	142-A3	1
24	Drain Plug	141-A4	1
25	Spring	143-A4	1
26	Washer	144-A4	1
27	Nut	453-A4	1
28	Washer	156-A4	1
29	Operating Lever Pivot	146-A4	1
30	Operating Lever	147-A3	1
31	Rubber Grip	196-A4	1
32	Worm Shaft	187-A3	1
33	Screwed Thrust Plug	123-A4	1
34	Shear Pin 4000 lb 1815 kg	5095-A4	1
35	Grub Screw	154-A4	2
36	Universal Joint	186-A3	1
37	Grub Screw, Dog Point	5283-A4	1
38	Seal	118-A4	4
39	Ball Bearing	119-A4	2
40	Worm	121-A3	1
41	Key	122-A4	2
42	'O' Ring Seal	138-A4	1
43	Dipstick	137-A4	1
44	Relief Valve	324-A4	1

===== ALWAYS QUOTE SERIAL NO. WHEN ORDERING SPARES =====



CAPSTAN WINCH & MOUNTING PLATE



PARTS LIST - LAND ROVER CAPSTAN WINCH & MOUNTING PLATE

ITEM NUMBER	NAME	FWL PART NO	QTY PER UNIT
50	Capstan Winch Unit	5244	1
51	Mounting Plate	105-A1	1
52	Rope Roller	1034-A3	1
53	Roller Bracket	1030-A3	2
54	Bolt M12 x 35 mm	4-33-1203522	2
55	Spring Washer 12 mm	4-51-1223	4
56	Nut M12	4-47-1223	4
57	Bolt M8 x 25 mm	4-33-0802522	9
58	Spring Washer 8 mm	4-51-0823	19
59	Nut M8	4-47-0823	13
60	Plain Washer 8 mm	4-50-0823	5
61	Lockplate	106-A2	1
62	Setscrew M8 x 35 mm	4-32-0803512	7
63	Rivnut M8	4-60-084003	7
64	C'sk Screw M8 x 25 mm	4-35-0802522	1
65	Support Plate Bracket	5304-A3	1
66	Shaft Support Plate	148-A3	1
67	[ Driving Dog - 5 b'r'g crank	6266-A3	1
	[ Driving Dog - 3 b'r'g crank	136-A3	1
68	[ Washer - 5 b'r'g crank	6268-A4	1
	[ Washer - 3 b'r'g crank	135-A3	1
69	[ Crankshaft Setscrew - 5 b'r'g crank	6267-A4	1
	[ Crankshaft Setscrew - 3 b'r'g crank	134-A4	1
70	Drive Shaft	444-A3	1
71	Thrust Washer	116-A4	1
72	Actuating Spring	129-A4	1
73	Key	128-A4	1
74	Starting Handle	170-A2	1
75	Bolt M12 x 25 mm	4-33-1202522	2
76	Setscrew M8 x 50 mm	4-32-0805012	1

ALWAYS QUOTE SERIAL No WHEN ORDERING SPARES.

## LAND ROVER FITTING INSTRUCTIONS

**IMPORTANT** - Land Rover have introduced a 5 bearing (Eng. Nos: Petrol 36100001A on, Diesel 36600001A on) crankshaft to replace the earlier 3 bearing crankshaft. The 2 crankshafts require different driving dogs (67), washers (68) and crankshaft setscrews (69). We endeavour to supply the correct parts to your specification but advise if any doubt exists that you remove your existing starter dog and compare the thread with the crankshaft setscrew supplied (M20 x 1.5mm pitch for 5 bearing,  $\frac{3}{4}$ "-16 PTI for 3 bearing). We will supply correct parts upon return of incorrect parts in new unused condition.

1. Remove existing starter dog from vehicle (DO NOT disturb the fan pulley) and replace with driving dog (item 67, see exploded view), crankshaft setscrew and washer (69, 68). On the driving dog is a small spigot, make sure this locates in fan pulley keyway and tighten setscrew to approximately 200 lbf (27.6m kg).
2. Make sure the parts on the drive shaft are assembled in order (70, 71, 72) and that the key (73) is firmly in position. Insert the shaft and key carefully into the universal joint (36) and tighten grubscrew (35). The shaft is adjustable  $\pm 1/8$ " (3mm).
3. Slacken the four bolts which hold bumper bar in position and remove, if fitted, the metal cowl, remove three of these bolts and swing bumper bar outwards. Offer up the winch, now fitted with drive shaft and insert the shaft through the chassis crossmember, push bumper bar back into position and rest the winch on top.

